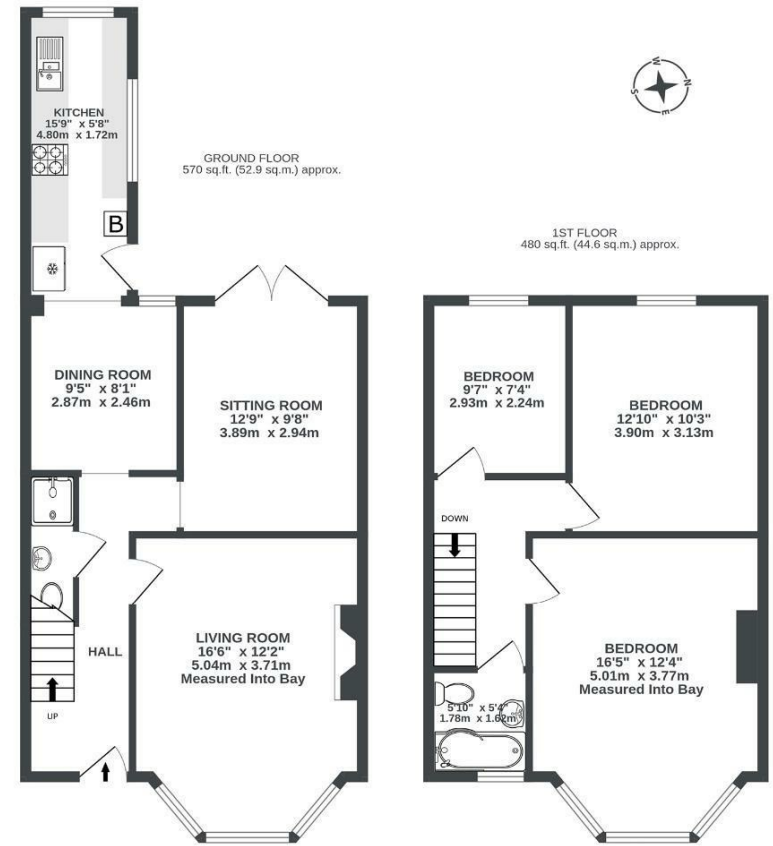


Boardwalk

# Wick Road , BRISTOL

## Wick Road BRISLINGTON

APPROXIMATE FLOOR AREA  
97.5 SQM / 1050 SQFT



Illustrations are for reference purposes only, measurements are approximate, not to scale.



Boardwalk

# Wick Road

, BRISTOL

£

£465,000



BS4 4HB

zzz

3 Bedrooms



2 Bathrooms



*"We love our home. It's a very light filled house all year round with high ceilings makes it feel very spacious. While in the winter the lovely living room with an amazing wood burner makes it feel very warm and cosy. The back sitting room is our space in the summer as the doors open onto our garden which gets the sun all day. We love sitting on the decking the bottom of the garden in the morning for a coffee, then the patio in the evening which is great for sunset dining outside. Having lovely neighbours on both sides is also an absolute bonus."*

