



St. Georges Square, SW1V

£700,000

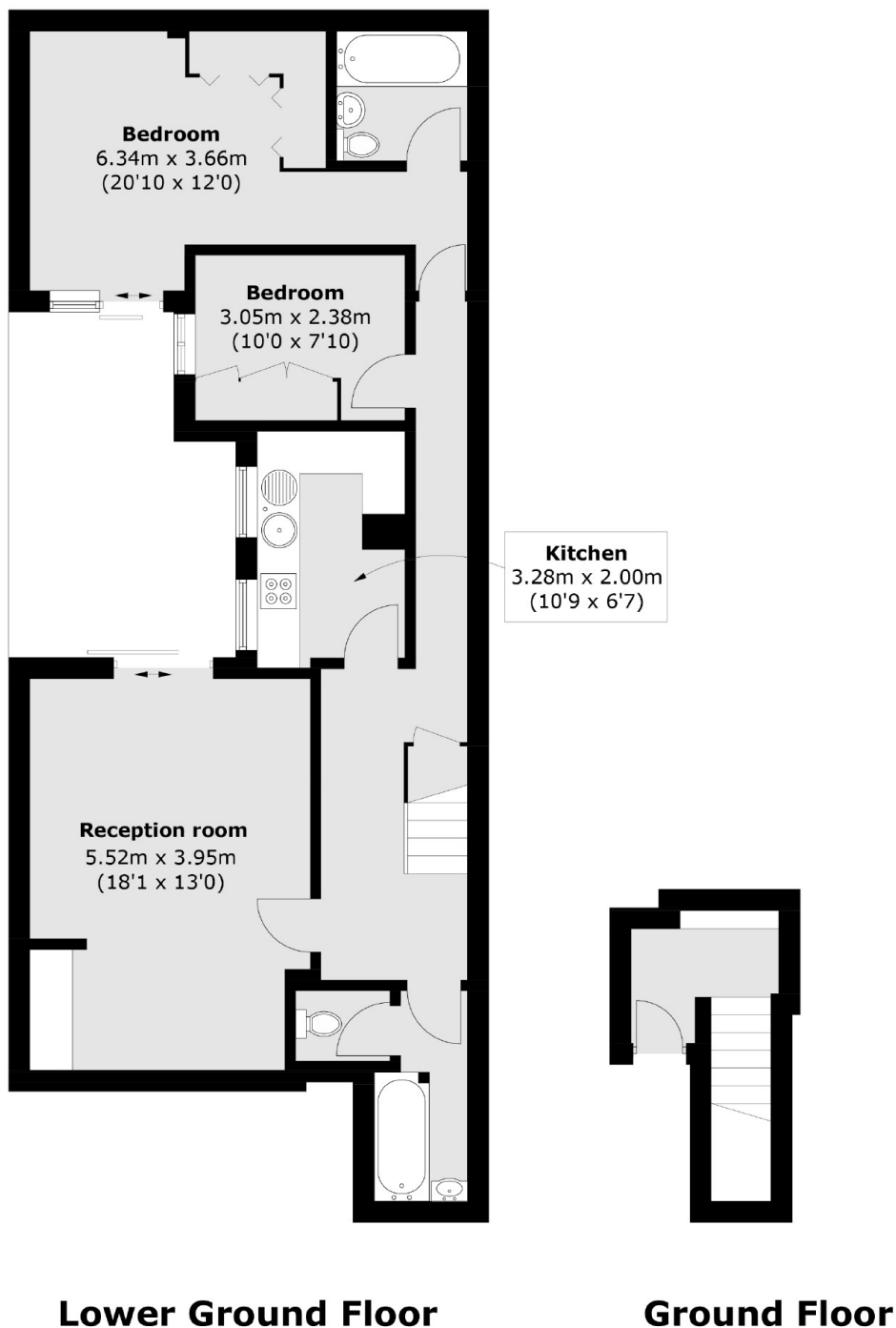
Accessed through the main entrance on the ground floor, a well presented two bedroom, two bathroom apartment features excellent proportions, a well equipped kitchen and bathrooms, and a charming private patio garden.

Conveniently located close to the gardens of St. George's Square and nearby transport links from Pimlico Underground and Victoria Station. In addition, it is within easy reach of the many amenities of Chelsea and Belgravia.

Features

- Two Double Bedrooms
- Two Bathrooms
- St Georges Square
- Private Patio
- C.167 Year Lease
- No Onward Chain

St. Georges Square, London, SW1V



Total area (approx.): 82.5 sq. m (887.7 sq. ft)