



**Apartment 3, 31, Castle Street, Shrewsbury, SY1 2BQ**  
£850 Per Month



Apartment 3, 31, Castle Street, Shrewsbury, SY1 2BQ

**£850 Per Month**

VIRTUAL TOUR AVAILABLE - Substantial one bedroom third floor apartment in a most attractive building in the heart of Shrewsbury town centre. Offering easy access to the railway station, main shopping areas and very close to the entrance to the castle and town library. Gated parking is available on a separate licence if required.

Available: 17/07/26

## Description

Comprising; Communal entrance, stairs to third floor, entrance hall including cloakroom with WC, large double bedroom including ensuite bathroom with separate shower, modern kitchen including oven, hob, fridge/freezer, washing machine and dishwasher, large living room including large windows with superb views. Gas central heating and double glazing throughout. EPC TBC



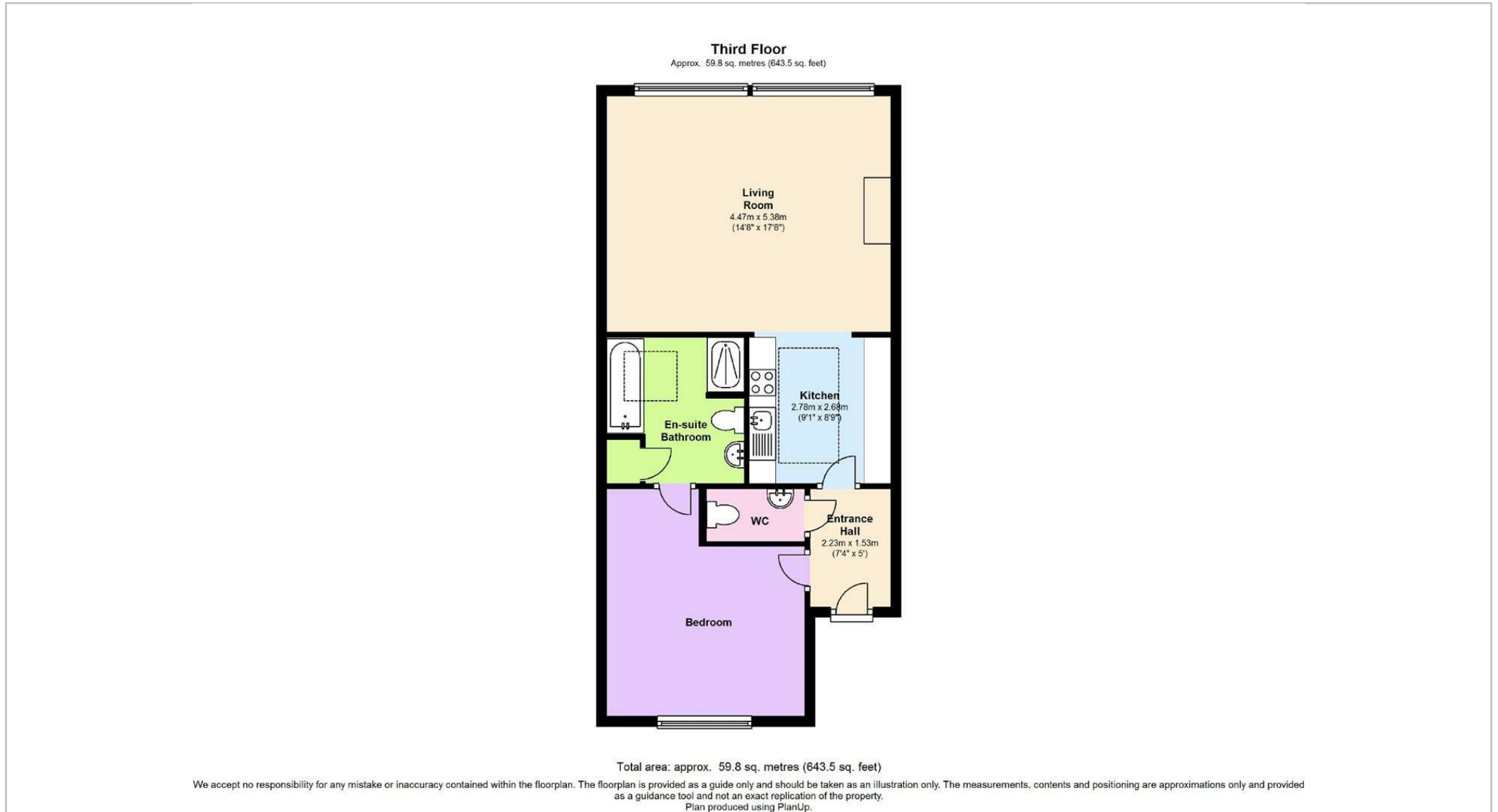
Unfurnished

Council Tax Band: A

Available: 17th July 2026

EPC:

## Floor Plans



These particulars, whilst believed to be accurate are set out as a general outline only for guidance and do not constitute any part of an offer or contract. Intending purchasers should not rely on them as statements of representation of fact, but must satisfy themselves by inspection or otherwise as to their accuracy. No person in this firm's employment has the authority to make or give any representation or warranty in respect of the property.