



25 Armoury Gardens, Shrewsbury, Shropshire, SY2 6PH

3 bedroom semi-detached house — £390,000 (Offers in the region of) Freehold

25 Armoury Gardens, Shrewsbury, Shropshire, SY2 6PH

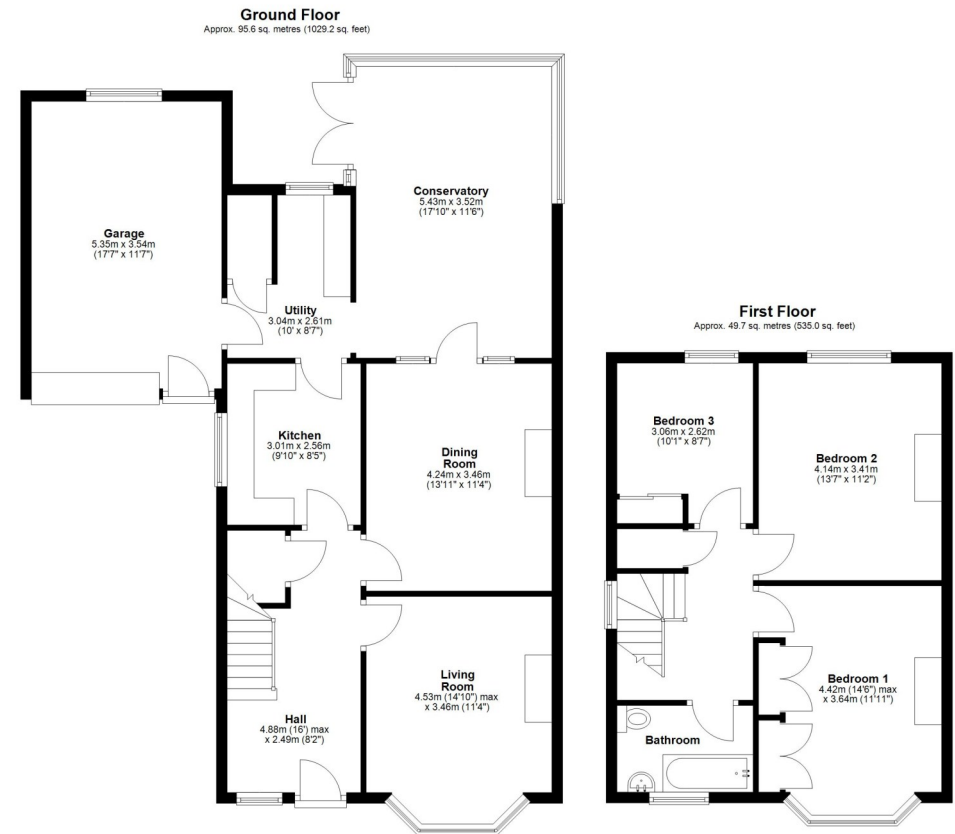
Coopergreenpooks.co.uk

£390,000 (Offers in the region of) Freehold — 3 bedroom semi-detached house
sales@cgpooks.co.uk

Located in a lovely setting on a very attractive and quiet tree lined street, this extremely well presented and improved semi-detached house offers good accommodation with a lovely southwest facing garden

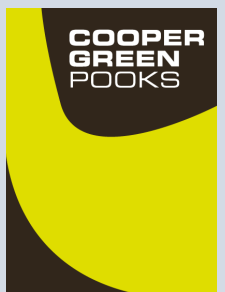
KEY FEATURES

- Covered entrance area to hall with original stained-glass windows, oak parquet flooring and a large walk-in store/pantry
- Living room with feature open fireplace and bay window to front
- Separate good sized dining room, which has a gas fire with surround, windows and a part glazed door to conservatory
- Kitchen fitted with a custom-made range of pine units, granite surfaces and tiled flooring. Adjoining which there is a utility room fitted to the same standard with a cloakroom
- Large conservatory which provides both dining and living space
- Staircase from hall to landing where there is built in storage, 3 bedrooms and a bathroom
- Double glazed windows and gas fired central heating
- Driveway providing parking for at least 2 cars and access to a large garage
- Private landscaped south/west facing rear garden which is mainly laid to lawn with established beds and paved sun terraces

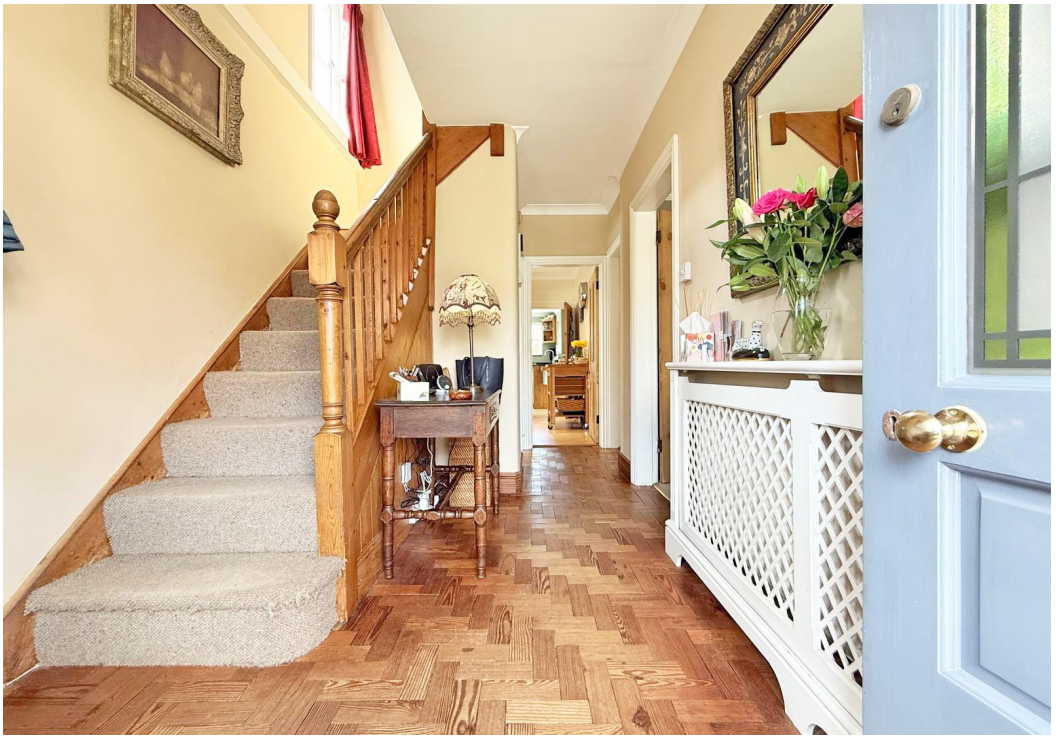


Cooper Green Pooks
3 Barker Street
Shrewsbury
SY1 1QF

www.cgpooks.co.uk
sales@cgpooks.co.uk









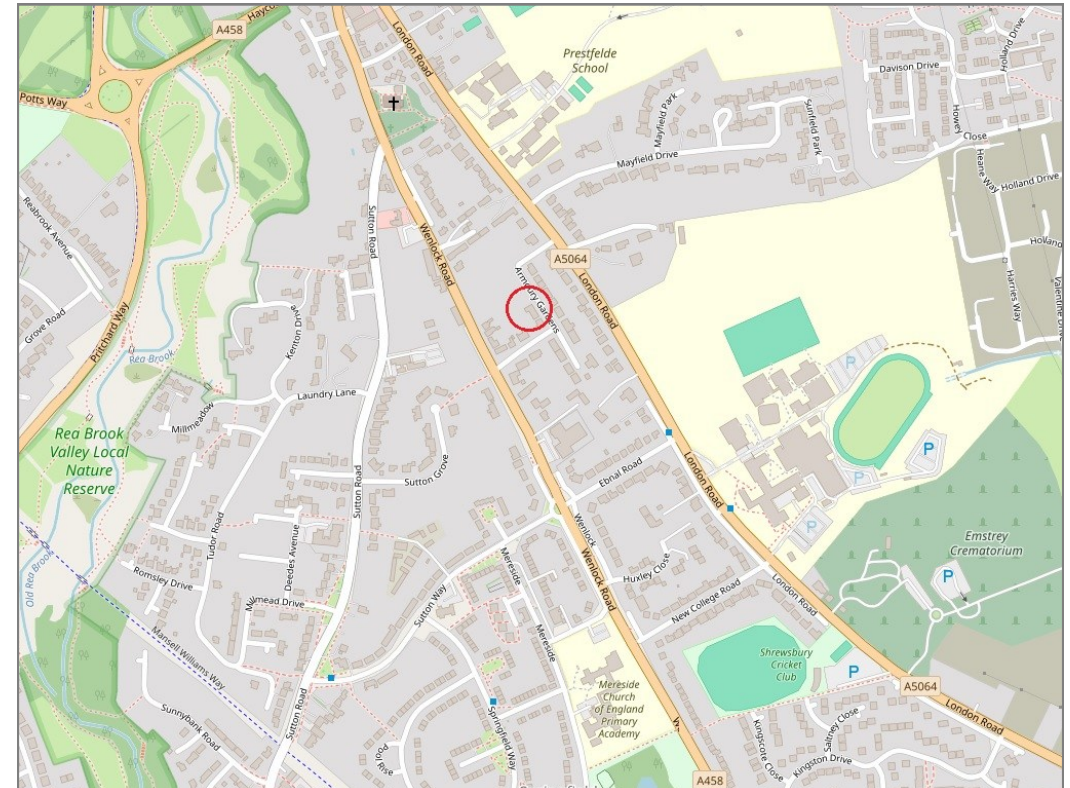
25 Armoury Gardens, Shrewsbury, Shropshire, SY2 6PH

£390,000 (Offers in the region of) Freehold — 3 bedroom semi-detached house
sales@cgpooks.co.uk

rightmove

onTheMarket.com

RICS
Regulated by RICS



BOUNDARIES NOT CONFIRMED

Tenure	Freehold
Local Authority	Shropshire Council
Council Tax	Band D
EPC Band	Band D
Services	All mains services are connected

Expert mortgage advice available

3 Barker St, Shrewsbury SY1 1QF

Cooper Green Pooks
01743 276666



Your home may be repossessed if you do not keep up repayments on your mortgage.

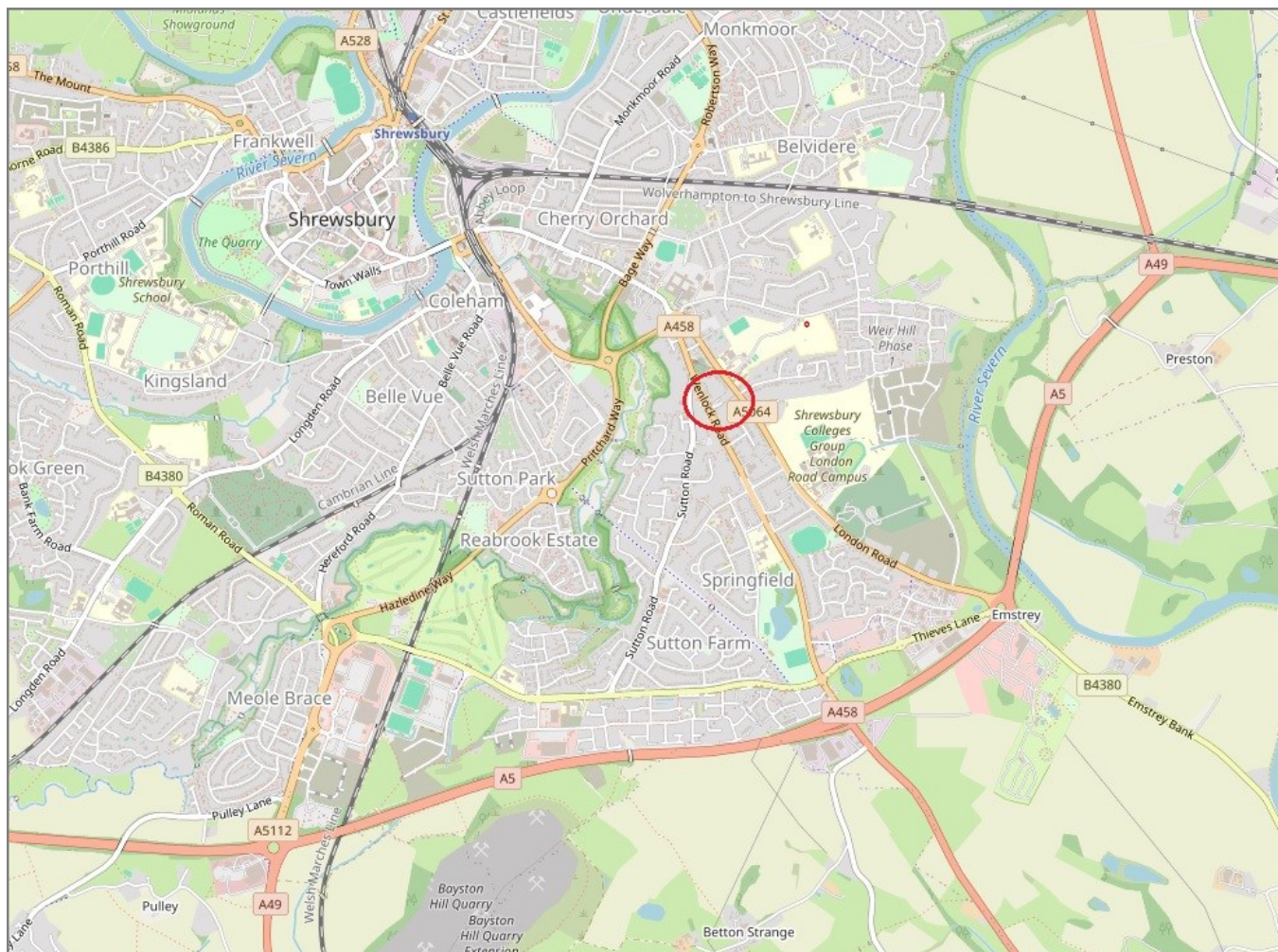
There may be a fee for mortgage advice. The actual amount you pay will depend upon your circumstances. The fee is up to 1% but a typical fee is 0.3% of the amount borrowed.

25 Armoury Gardens, Shrewsbury, Shropshire, SY2 6PH

Coopergreenpooks.co.uk

£390,000 (Offers in the region of) Freehold — 3 bedroom semi-detached house

sales@cgpooks.co.uk



IMPORTANT NOTICE: Cooper Green Pooks for themselves and for the lessors or vendors of this property whose agents they are give notice that: 1 No appliances, services or service installations have been tested and no warranty as to suitability or serviceability is implied. Any prospective purchaser or lessee is advised to obtain verification from their surveyor or solicitor. 2. The particulars are set out as a general outline only for the guidance of the intended purchasers or lessees and do not constitute, nor constitute part of, an offer or contract. 3. All descriptions, reference to condition and necessary permissions for use and occupation and other details are given in good faith and are believed to be correct but any intending purchasers or lessees should not rely on them as statements or representation of fact but satisfy themselves by inspection or otherwise as to the correctness of each of them. 4. No person in the employment of Cooper Green Pooks has any authority to make or give any representation or warranty whatsoever in relation to this property. 5. All rentals and prices are quoted exclusive of Stamp Duty, legal and surveyors fees and any other associated purchasers or lessees costs. 6. Floor plans are indicative only and should not be relied on. 7. The plan showing the boundary of the property is indicative only and has not been checked against the legal title so should not be relied on. 8. All dimensions, floor areas and site areas are only approximate and should not be relied on. Dimensions are generally maximum room dimension.