



# Prince of Wales Road

London, NW5

Offers in Excess of £390,000

An excellent one bedroom lower ground floor flat with the benefit of its own entrance, private outdoor space and access to a communal garden.

The property comprises a bright and spacious reception room with direct access to private outside space - leading to a communal garden, a modern separate kitchen, family bathroom and a well proportioned bedroom featuring built in storage.



# Prince of Wales Road

London, NW5

- One Bedroom
- Patio & Communal Garden
- Own Entrance
- Excellent Condition
- Great Location
- Close To Camden & Kentish Town



Prince of Wales Road is a fantastic location close to the amenities, shops, bars and restaurants of Kentish Town, as well as outstanding schools and within easy reach of Camden Town and Chalk Farm. The green open spaces of Primrose Hill and Parliament Hill / Hampstead Heath are nearby and transport is excellent with Kentish Town West and Kentish Town stations in very easy reach.

---

**Tenure:** Leasehold (103 years remaining)

**Service Charge:** £600 p.a

**Ground Rent:** £75 p.a

**Local Authority:** Camden

**Council Tax Band:** C

---

### *Chestertons Camden & Kentish Town Sales*

99-101 Parkway

Camden

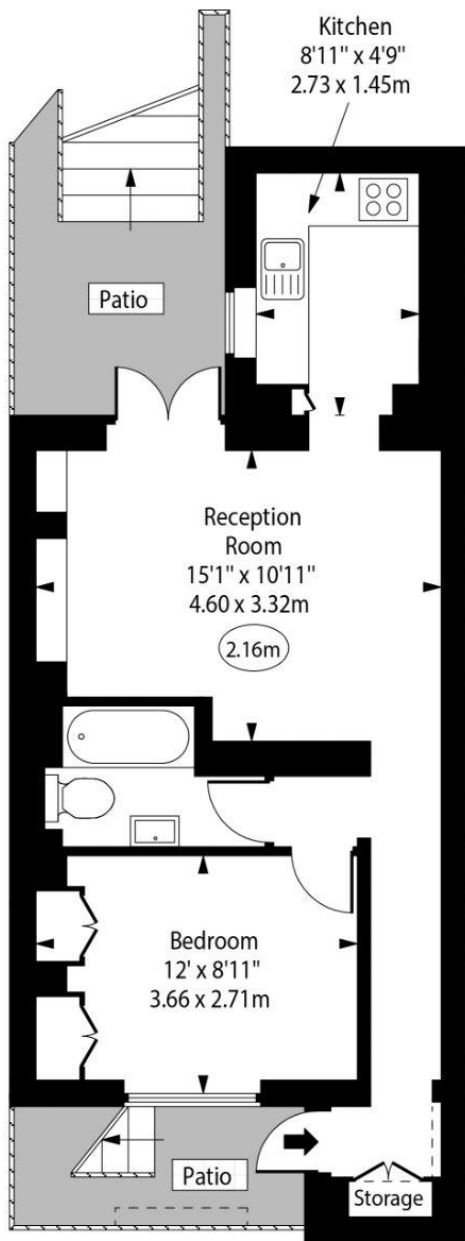
London

NW1 7PP

camden@chestertons.co.uk

020 7267 2053

chestertons.co.uk



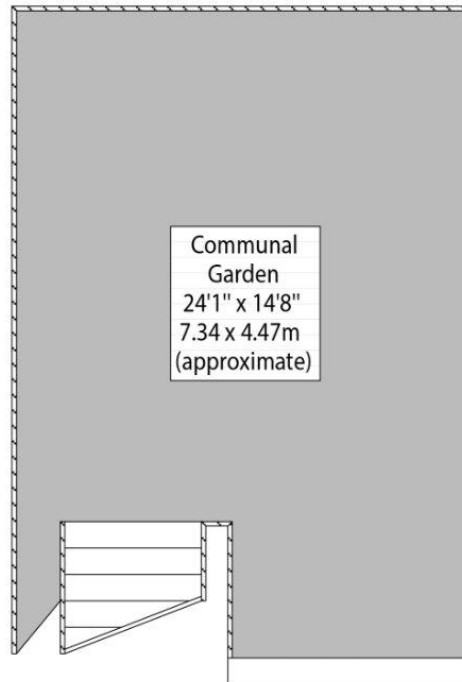
Lower Ground Floor

Gross Internal Area - 440 Sq Ft - 40.88 Sq M

Prince Wales Road



○ - Ceiling Height



Ground Floor

Approx Gross Internal Area 440 Sq Ft - 40.88 Sq M  
(Including Storage)

Every attempt has been made to ensure the accuracy of the floor plan shown. However, all measurements, fixtures, fittings, and data shown are approximate interpretations and for illustrative purposes only. Measured according to the RICS. Not To Scale.

[www.goldlens.co.uk](http://www.goldlens.co.uk)  
Ref. No. 030972D

