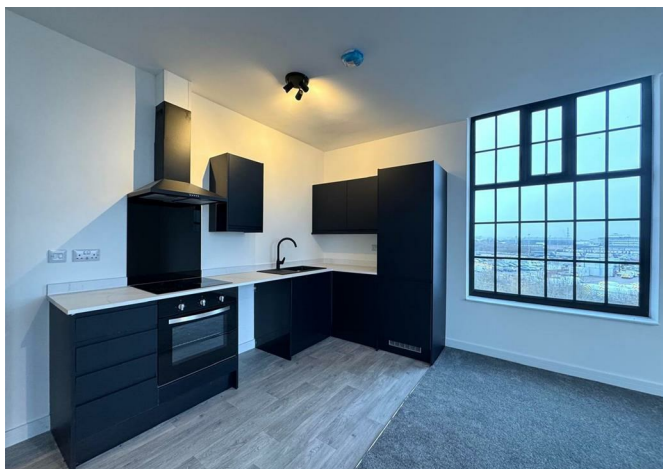


BRICK
MANAGEMENT + LETTINGS



34 The Mill Apartments 279 Osmaston Road, Derby, DE23 8DY

£1,125 Per month



34 The Mill Apartments 279 Osmaston Road, Derby, DE23 8DY

£1,125 Per month

New to the market, this modern and spacious two double bedroom apartment is located on the second floor of the brand new The Mill development located just outside of Derby town centre.

The apartment benefits from a long entrance hallway with ample storage leading into a large open plan living room/dining area with large windows throughout and a stylish fitted kitchen with integrated appliances. Also off the hallway are two double bedrooms, the master benefiting from a modern ensuite shower room and there is also a further separate shower room to the same standard.

Offered on an unfurnished basis, with secure entry-phone access and neutral decoration throughout.

Residents of the development have use of a lift to all floors.

The Mill is located just a short walk from the local Peartree train station and just a 10 minute drive from Derby town centre and numerous local amenities.

Description



Situation

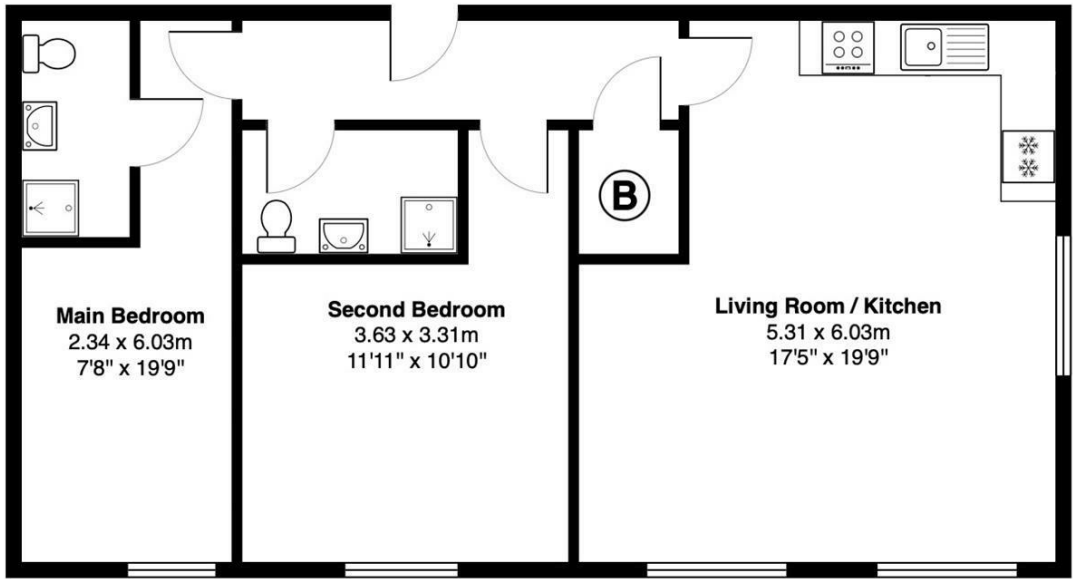


Unfurnished

Council Tax Band: New Build

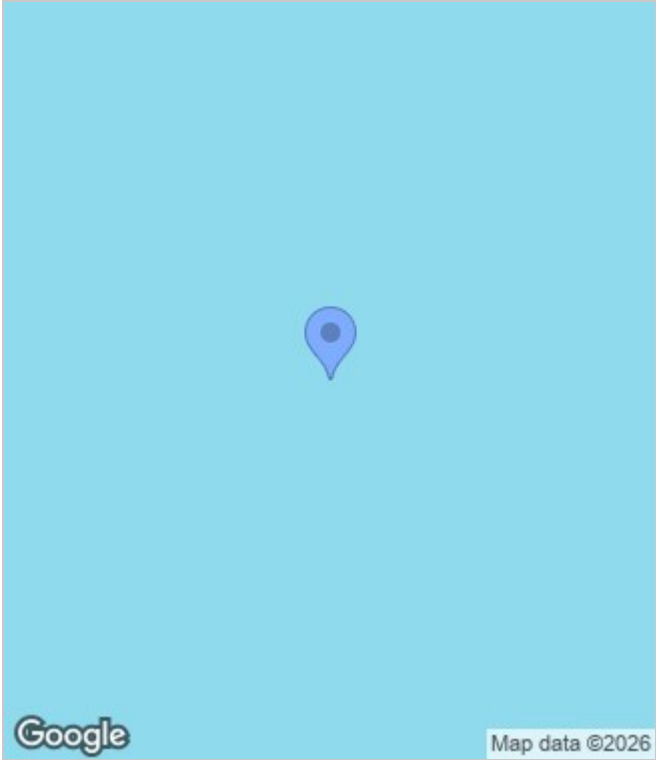
Available: 9th January 2026

Floor Plans

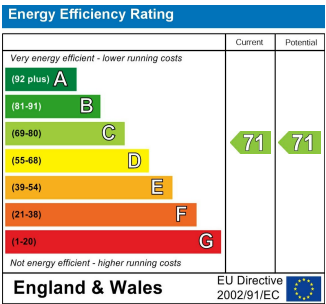


All measurements are approximate and for display purposes only

Area Map



Energy Performance Graph



These particulars, whilst believed to be accurate are set out as a general outline only for guidance and do not constitute any part of an offer or contract. Intending purchasers should not rely on them as statements of representation of fact, but must satisfy themselves by inspection or otherwise as to their accuracy. No person in this firms employment has the authority to make or give any representation or warranty in respect of the property.