

TG

SALES & LETTINGS



Finlay Road, Gloucester
Gloucestershire GL4 6TW

£330,000

- ***No Onward Chain***
- Re-Fitted Kitchen
- Detached Garage & Ample ORP
- Extended To The Rear
- Three Bedrooms
- Downstairs Cloakroom
- Gas Central Heating
- Double Glazed

The Property

* Welcome home! A fabulous extended three-bedroom detached property with parking *

TG Sales & Lettings are delighted to offer For Sale this EXTENDED, THREE BEDROOM DETACHED property that has undergone some significant works.

Located close to Gloucester City Centre, local transport routes, and amenities, it would make a perfect family home.

On the ground floor, there is an entrance hallway, a large lounge with a bay window to the front, a dining room that has been extended to create a light and airy family room, which has a fantastic, glazed picture window, with French doors leading out into the rear garden.

The re-fitted kitchen benefits from integrated appliances and a downstairs cloakroom. Upstairs you will find two good-sized double bedrooms, a single bedroom, and a modern fitted bathroom with a mixer shower over the p-shaped bath.

A family-friendly enclosed garden is found at the rear of the property. This is mainly laid to lawn but with a secluded patio area, and you will also find a detached garage to the side.

The property also benefits from off-road parking, gas central heating, and double



Situation

Finlay road has great access into Gloucester City Centre which has many top brand name stores, large retail outlets and fashion shops. Within easy walking distance you will find the Quays where you will also find a variety of shops, restaurants, bars and a cinema. Sporting facilities include a Leisure Centre, Local football and Rugby clubs and much more. Local schools are available for all ages.

Directions

SATNAV postcode GL4 6TW

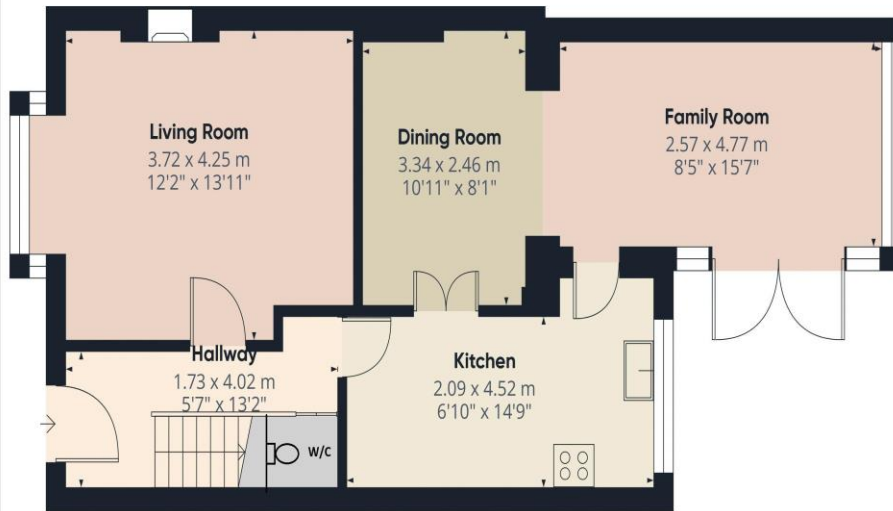
Tenure Freehold

Local Authority Gloucester

Services Electric, Mains Gas, Mains Drainage and Water are all believed to be connected to the property.

Council tax band C





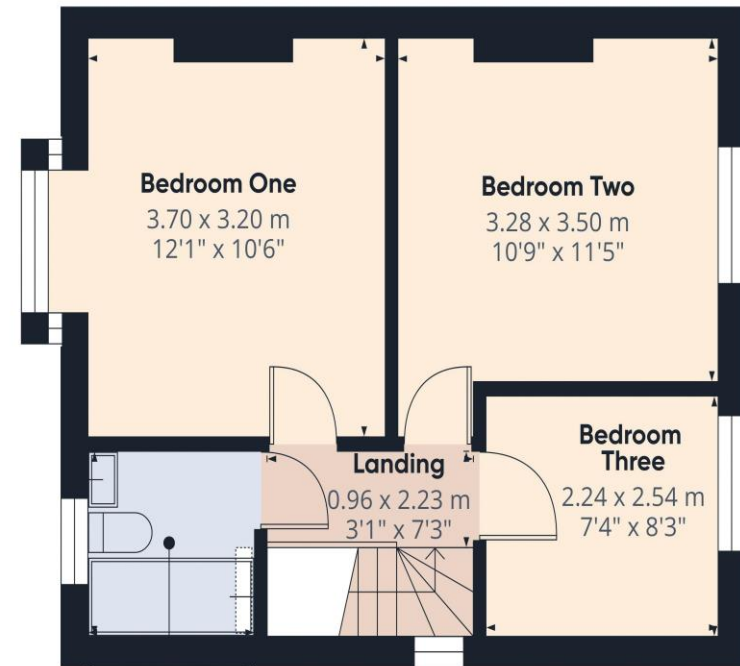
Floor 0

Approximate total area⁽¹⁾
55.3 m²
596 ft²

(1) Excluding balconies and terraces

Calculations reference the RICS IPMS 3C standard. Measurements are approximate and not to scale. This floor plan is intended for illustration only.

GIRAFFE360



Floor 1

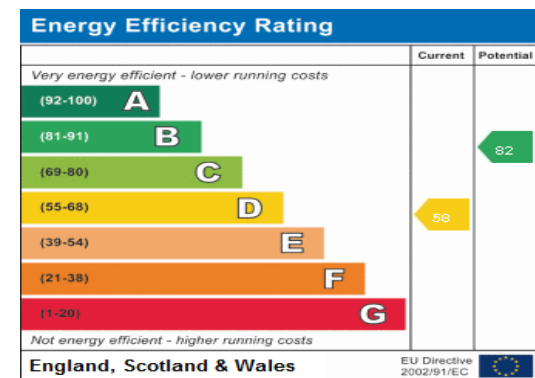
Approximate total area⁽¹⁾
35.6 m²
384 ft²

(1) Excluding balconies and terraces

Calculations reference the RICS IPMS 3C standard. Measurements are approximate and not to scale. This floor plan is intended for illustration only.

GIRAFFE360

Head Office
TG Sales & Lettings
48 Stroud Road
Gloucester
Gloucestershire
GL1 5AJ
Tel: 01452 311776
Email: info@tgres.co.uk
Website: www.tgres.co.uk



T G Sales & Lettings and any parties they are acting for hereby give you notice that: These details are for guidance only and cannot guarantee the accuracy of any description, dimension, condition or any required permission for occupation and use. It is not company policy to test any services or appliances in properties offered for sale and these should be verified by the purchaser's solicitors. T G Sales & Lettings will not be liable for any loss arising from the use of these details. No responsibility is taken for any errors, omissions or misstatements within these particulars. It should not be assumed that the property has all the necessary planning, building regulation or other consents. These particulars do not form any part of any offer or contract and must not be relied upon as statements or representations of fact. Buyers are advised to seek advice from their legal representation. T G Sales & Lettings is a limited liability partnership registered in England and Wales. Registered Number: 9763381 Registered Office: 48 Stroud Road, Gloucester, Gloucestershire, GL1 5AJ.