



ANDREW
EXELBY
ESTATE AGENTS

St Marys Street, Penzance TR18

Guide Price £300,000

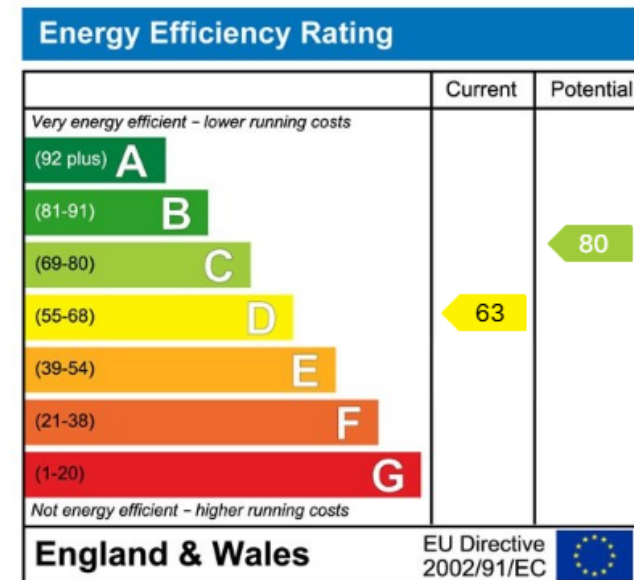
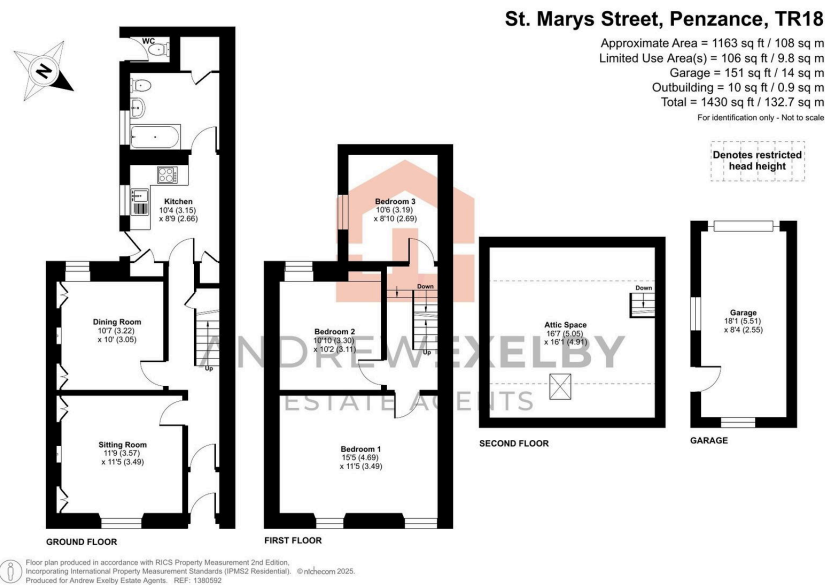
🛏 3 🚿 1 🚗 2



- OFFERED TO THE MARKET WITH NO ONWARD CHAIN
- MAJORITY UPVC DOUBLE GLAZING
- REAR COURTYARD GARDEN
- CLOSE PROXIMITY TO PENZANCE TOWN
- THREE DOUBLE BEDROOM MID TERRACE TOWNHOUSE
- GAS CENTRAL HEATING
- GARAGE FOR A SMALL VEHICLE
- EPC RATING - D63 / COUNCIL TAX BAND - B



Offered to the market with NO ONWARD CHAIN is this three bedroom mid terrace town house that is conveniently located for the town of Penzance. The property has retained a number of character elements within and further benefits from majority uPVC double glazing along with a good size rear courtyard garden and single garage.



48 Causewayhead, Penzance,
 Cornwall TR18 2SS
 01736 697414
 hello@andrewexelby.co.uk

andrewexelby.co.uk

Agents Note: Whilst every care has been taken to prepare these sales particulars, they are for guidance purposes only. All measurements are approximate are for general guidance purposes only and whilst every care has been taken to ensure their accuracy, they should not be relied upon and potential buyers are advised to recheck the measurements