



78 Trinity Street, Belle Vue, Shrewsbury, SY3 7PD

2 bedroom end terrace house — £180,000 Freehold

78 Trinity Street, Belle Vue, Shrewsbury, SY3 7PD

Coopergreenpooks.co.uk

£180,000 Freehold — 2 bedroom end terrace house

sales@cgpooks.co.uk

This attractive end of terrace house is in need of general modernisation but offers great accommodation with a private rear garden. The property is well situated on a pretty street within the very popular Belle Vue area, just a few minutes walk from Coleham and the town centre.

KEY FEATURES

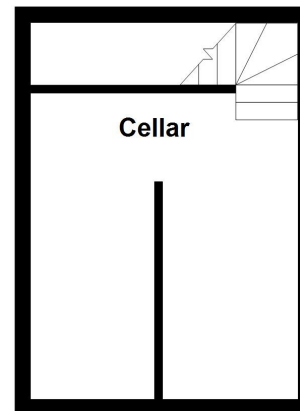
- Separate living and dining rooms, as well as kitchen and lean to, from which there is access to the rear garden. There is also a useful cellar.
- Enclosed staircase from dining room to the first floor landing, where there are two bedrooms and a shower room.
- Upgraded gas fire central heating system.
- Courtyard garden to front and access along the side of the property to the private established rear garden, which is partly walled.
- Really good location a short walk from the vibrant Coleham area of town and also the town centre, via the Greyfriars footbridge.
- Vacant with no onward chain.

Cooper Green Pooks
3 Barker Street
Shrewsbury
SY1 1QF

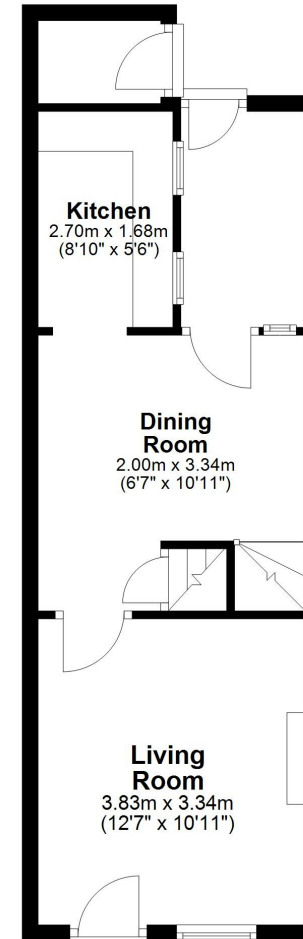
www.cgpooks.co.uk
sales@cgpooks.co.uk
01743 276666



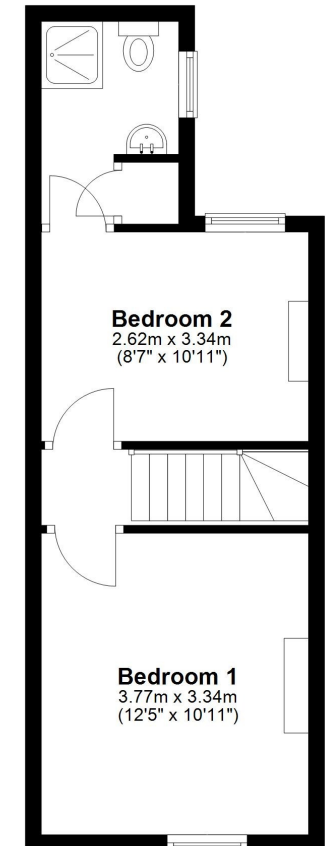
Basement
Approx. 15.7 sq. metres (169.3 sq. feet)



Ground Floor
Approx. 34.1 sq. metres (367.3 sq. feet)



First Floor
Approx. 29.7 sq. metres (319.8 sq. feet)



Total area: approx. 79.6 sq. metres (856.4 sq. feet)





78 Trinity Street, Belle Vue, Shrewsbury, SY3 7PD

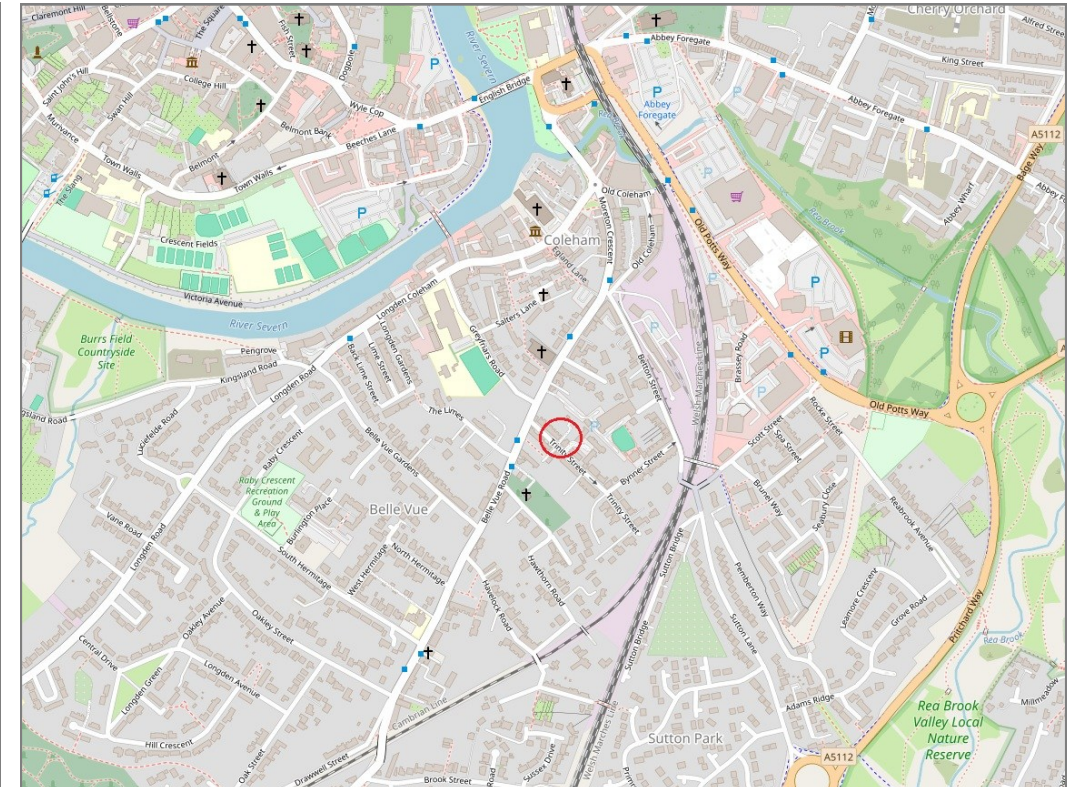
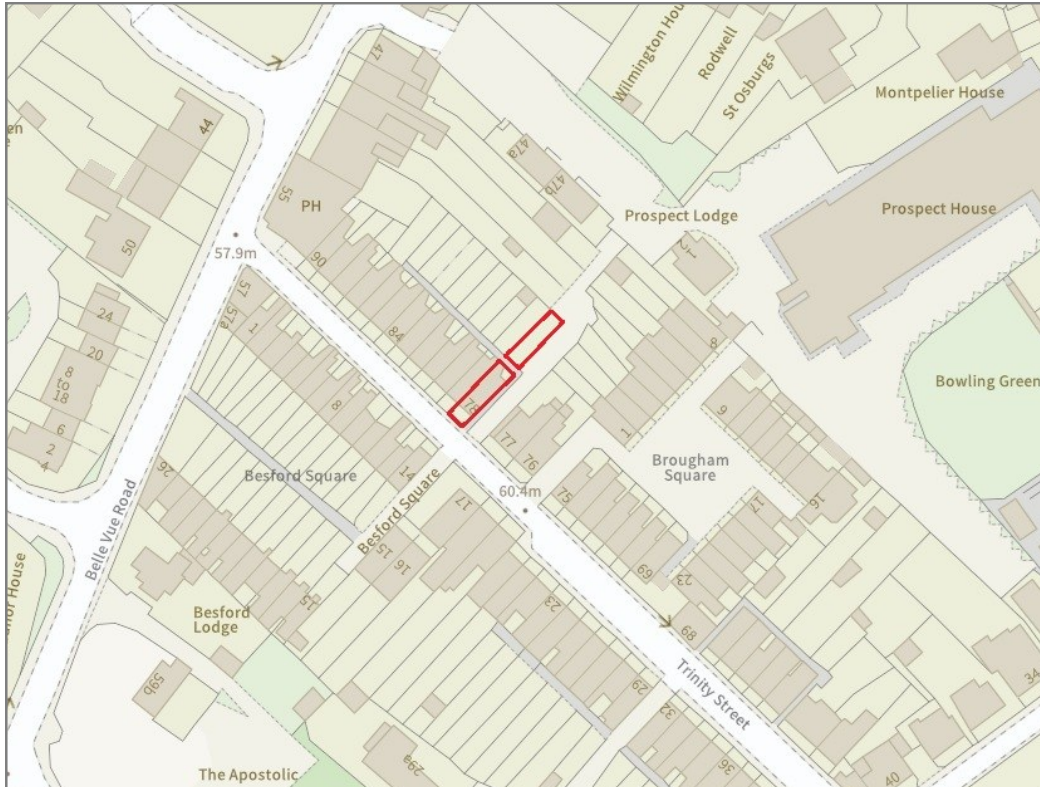
£180,000 Freehold — 2 bedroom end terrace house

sales@cgpooks.co.uk

rightmove

onTheMarket.com

RICS
Regulated by RICS



BOUNDARIES NOT CONFIRMED

Tenure	Freehold
Local Authority	Shropshire Council
Council Tax	Band B
EPC Band	Band D
Services	All mains services are connected

Expert mortgage advice available

3 Barker St, Shrewsbury SY1 1QF

Cooper Green Pooks
01743 276666



Your home may be repossessed if you do not keep up repayments on your mortgage.

There may be a fee for mortgage advice. The actual amount you pay will depend upon your circumstances. The fee is up to 1% but a typical fee is 0.3% of the amount borrowed.

