



25 Hawthorn Grove, Heaton Moor, Stockport, SK4 4HZ

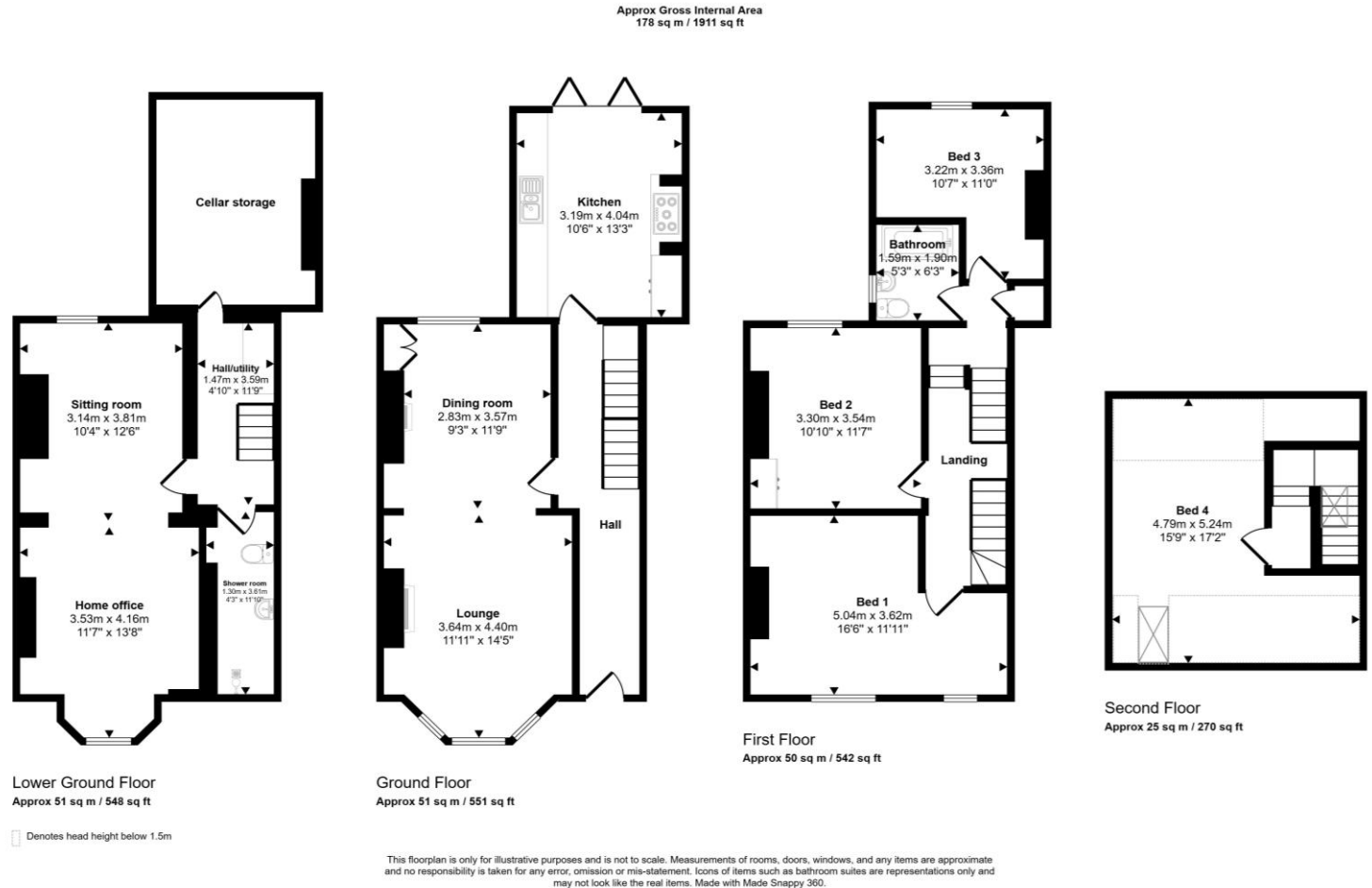
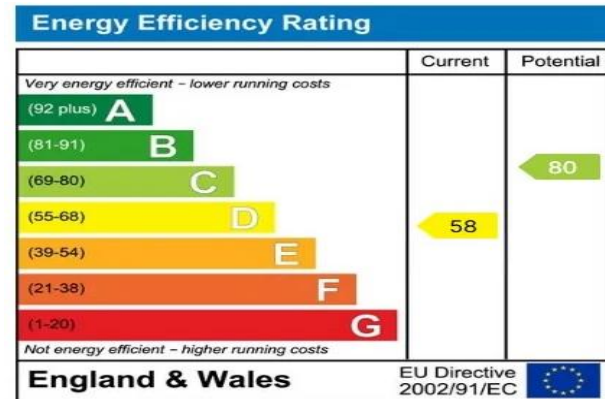
JohnMellor



Must be viewed! A beautifully appointed and most attractive period terrace property affording superb **FOUR BEDROOM** living accommodation laid out over three floors together with a fantastic converted cellar. The bright and airy rooms have been much improved over the years with attention paid to detail and afford much of the charm and character of their era and include a stunning kitchen with bi-fold doors leading out on to an elevated decked area. Gas central heating is installed and the vendor recently had windows to the front and rear refurbished in keeping with the age of the property.



Special note should also be made of the delightful gardens to both the front and rear of the property which are a good size and afford an excellent degree of privacy. Hawthorn Grove is ideally situated a short walk away from local shops, bars, restaurants and the Savoy Cinema. Public transport services, including trains, operate into both Stockport and Manchester centres with Heaton Chapel train station just a 0.7 mile walk away. Freehold. Council tax band D. This really is a superb home and viewing is strongly recommended.



JohnMellor

182 Heaton Moor Road, Heaton Moor,
Stockport, Cheshire, SK4 4DU
Tel: 0161 442 4142
sales@john-mellor.co.uk
www.john-mellor.co.uk

IMPORTANT! These particulars and floor plans are set out as a general outline only for the guidance of intending purchasers or lessees and do not constitute part of an offer or contract, nor may they be regarded as representations. All interested parties must themselves verify their accuracy. All measurements are approximate. The agents have not tested any apparatus, equipment, fixtures, fittings or services and so cannot verify that they are in working order, or fit for purpose. The buyer is advised to obtain verification from their solicitor or surveyor. J273