



Cambridge Road, TW11

£385,000

This spacious one double bedroom apartment is located in the popular Cherrywood Court development moments from the High Street. This is the ideal first time purchase or investment property.

Set in a quiet development just behind Teddington high street with its shops, restaurants and train station. Minutes away from the river Thames and Bushy Park.

Features

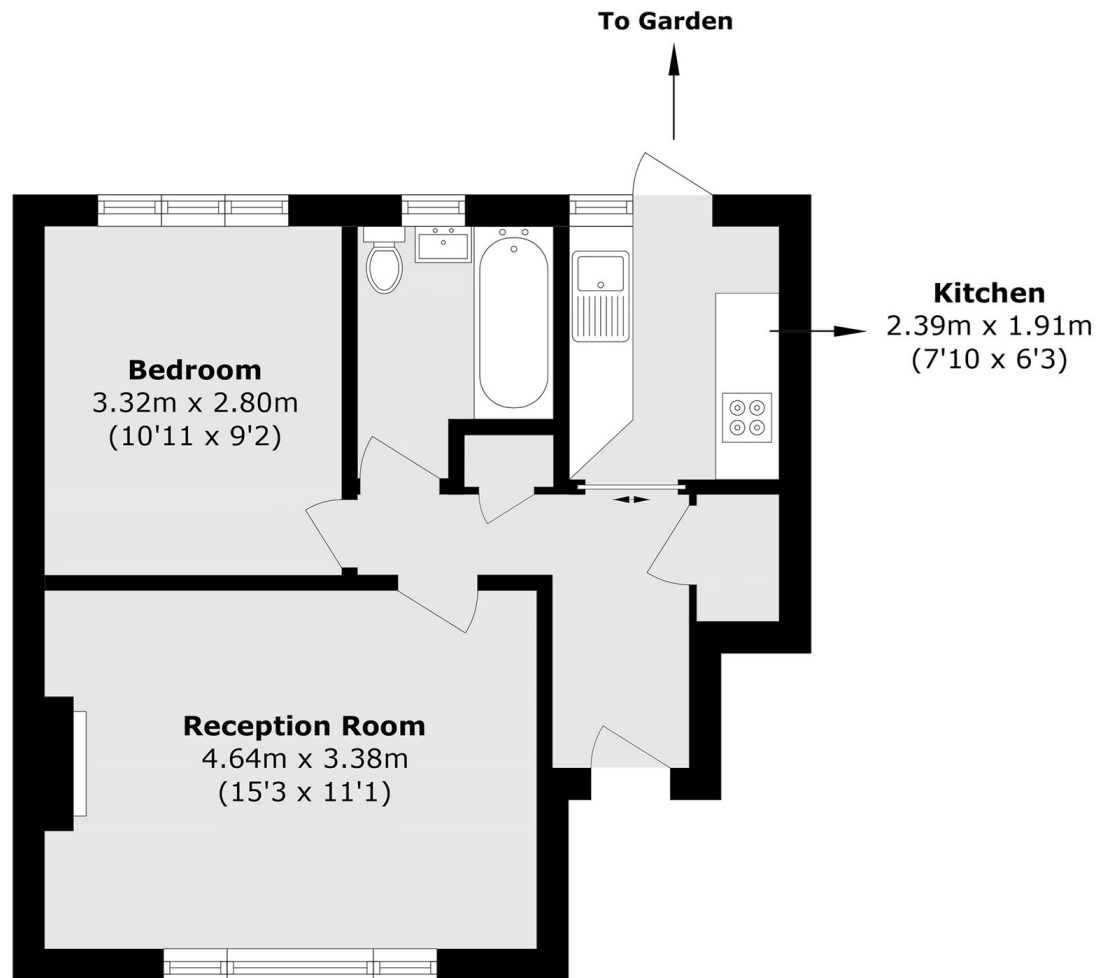
- Maisonette
- Ground Floor
- One Double Bedroom
- One Bathroom
- Private Garden
- Central Location



Cambridge Road, TW11



Cambridge Road, Teddington, TW11



Total area (approx.): 42.1 sq. m (453.1 sq. ft)