

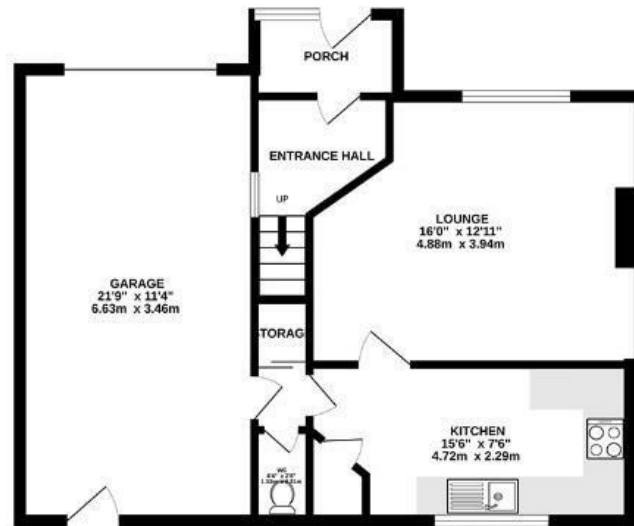
# Hottom Gardens

HORFIELD

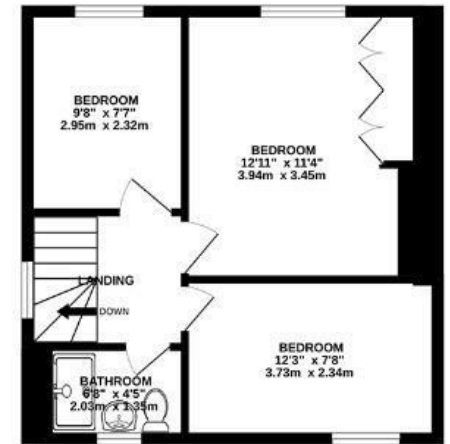
APPROXIMATE FLOOR AREA  
96.1 SQM / 1035 SQFT



GROUND FLOOR



FIRST FLOOR



Illustrations are for reference purposes only, measurements are approximate, not to scale.

Boardwalk

# Hottom Gardens

, BRISTOL



£325,000



3 Bedrooms



BS7 0LD



1 Bathrooms

*"The house has been my home for fifty years and has been a wonderful sanctuary for children and now grandchildren. My sons were age five and seven when we moved in and it's always been a good family home. We had a snooker table and dart board the garage which provided hours of entertainment. I spend a great deal of time in the garden when weather permits, relaxing and reading. Another favourite is having family and friends round for a barbecue."*

