



## Clifton Road

Isleworth, TW7

£300,000

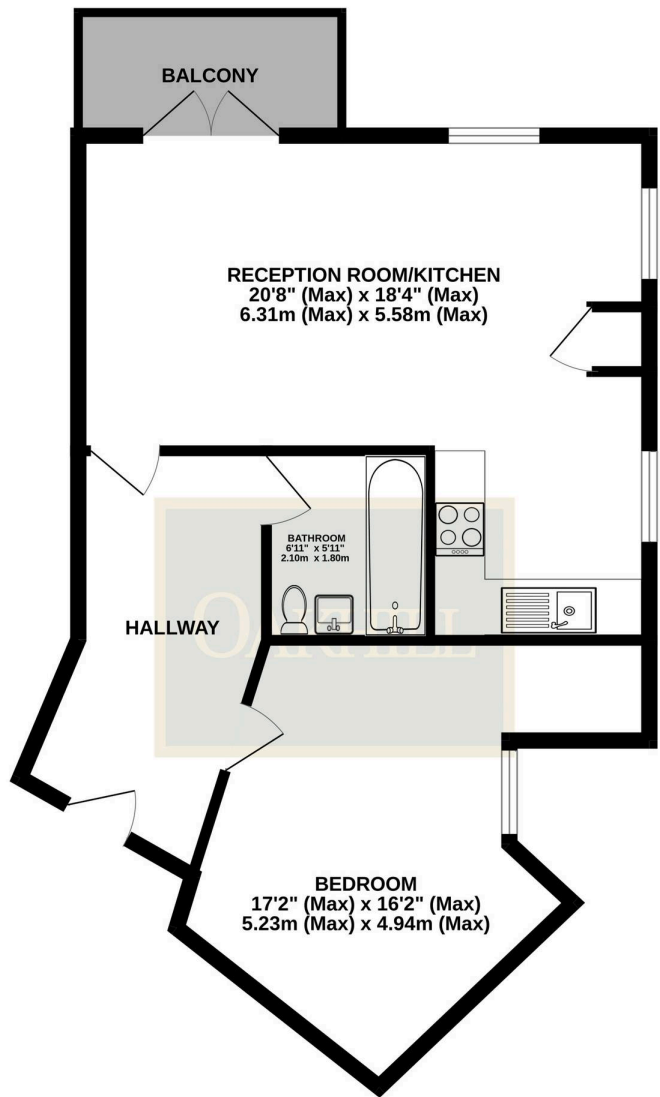
A beautifully presented and exceptionally spacious one-bedroom apartment, situated on the second floor of a modern and well-maintained development. Ideally located within a short walk of Isleworth station and a range of local amenities, this property offers both convenience and contemporary living. The apartment boasts a superb open-plan reception room with a stylish fitted kitchen, creating a bright and sociable living space. French doors lead out to a private balcony, allowing for plenty of natural light and an ideal spot to relax. The property further benefits from a modern, luxury bathroom suite and a generously sized double bedroom complete with built-in wardrobes. A unique feature is the private ladder access to an extensive loft space, providing excellent additional storage. This fantastic home represents an ideal investment opportunity or a perfect first-time purchase.



- Spacious Living Area
- Private Balcony
- Excellent Location
- Large Loft Space Included
- Low Service Charge and Ground Rent
- Well Kept Communal Areas

SCAN HERE  
FOR  
PROPERTY  
DETAILS





**RECEPTION ROOM/KITCHEN**  
 20'8" (Max) x 18'4" (Max)  
 6.31m (Max) x 5.58m (Max)

**HALLWAY**

**BATHROOM**  
 5'11" x 5'11"  
 2.10m x 1.50m

**BEDROOM**  
 17'2" (Max) x 16'2" (Max)  
 5.23m (Max) x 4.94m (Max)



TOTAL FLOOR AREA: 572sq.ft. (53.1 sq.m.) approx.  
 Whilst every attempt has been made to ensure the accuracy of the floorplan contained here, measurements of doors, windows, rooms and any other items are approximate and no responsibility is taken for any error, omission or mis-statement. This plan is for illustrative purposes only and should be used as such by any prospective purchaser. The services, systems and appliances shown have not been tested and no guarantee as to their operability or efficiency can be given.  
 Made with Metropix ©2025