



Somers Road, Reigate

GUIDE PRICE £300,000- £325,000





“

An opportunity to live in one of Reigate's prime locations. This home combines period features with a modern touch.

”



Guide Price £300,000 - £325,000

Situated in one of Reigate's most sought-after locations is this beautiful first floor, conversion apartment. Set within a grand and characterful building, this home is full of period features and benefits from spacious communal gardens, offering lovely views over Reigate Hill.

As you step inside, a magnificent communal entrance hall sets the tone, leading up to the apartment itself.

Inside, the home immediately impresses with its bright and spacious interior. From the right of the hallway, you walk into a light-filled room, with large, full length windows providing views across the treetops, creating a real sense of privacy. The high ceilings with a classic rose detail and soft furnishings work to give the lounge a warm and welcoming feel.

Through an archway off the lounge is the stylish kitchen, featuring sleek white cabinetry, wooden worktops and an open-plan layout, ideal for entertaining and modern living.

There are two well-proportioned bedrooms, both with built-in wardrobes and the principal bedroom also benefits from another large window, flooding the room with natural light. The family bathroom is set off the hallway and has been tastefully refurbished with modern fixtures and porcelain tiling.

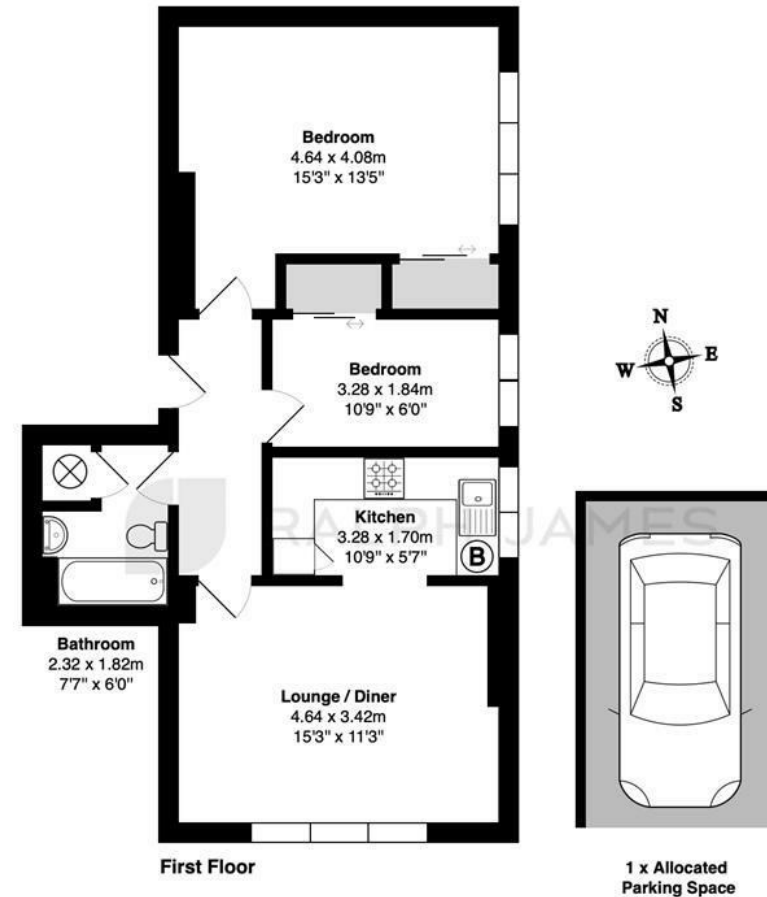
Outside, residents can enjoy the generous communal garden that backs onto Micklefield School's cricket field. A perfect space for enjoying the sunshine and hosting family and friends. This home also benefits from private, off-road residents parking.

A fantastic opportunity for first time buyers, investors and downsizers looking to be close to Reigate town centre and train station. The ever-popular Priory Park and an abundance of local shops and restaurants are just a short stroll away.



Need to know

- A beautifully presented period conversion apartment
- High ceilings and character features throughout
- Two well-proportioned bedrooms with built in wardrobes
- Large principal bedroom flooded with natural light
- Modern kitchen and bathroom with sleek finishes
- Generous communal gardens with views over Reigate Hill
- Off-road residents parking
- Prime North Reigate location
- A short stroll from Reigate town centre, train station and local shops and amenities
- No onward chain



Somers Road, Reigate

Total Area: 58.0 m² ... 625 ft² (excluding 1 x allocated parking space)

FOR ILLUSTRATIVE PURPOSES ONLY.

Whilst every attempt has been made to ensure the accuracy of the floor plan shown, all measurements, positioning, fixtures, features, fittings and any other data shown are an approximate interpretation for illustrative purposes only and are not to scale.

No responsibility is taken for any error, omission, miss-statement or use of data shown.

The above statement applies to both 'Still Moving London LTD' and the Company or individual displaying this floor plan.

Unauthorised reproduction prohibited.

Â© Still Moving London LTD (www.stillmoving.london)

 RALPH JAMES

Interested?

reigate@ralphjames.co.uk
01737 333677

ralphjames.co.uk