



## Beechwood Grove, W3

£531 Per week

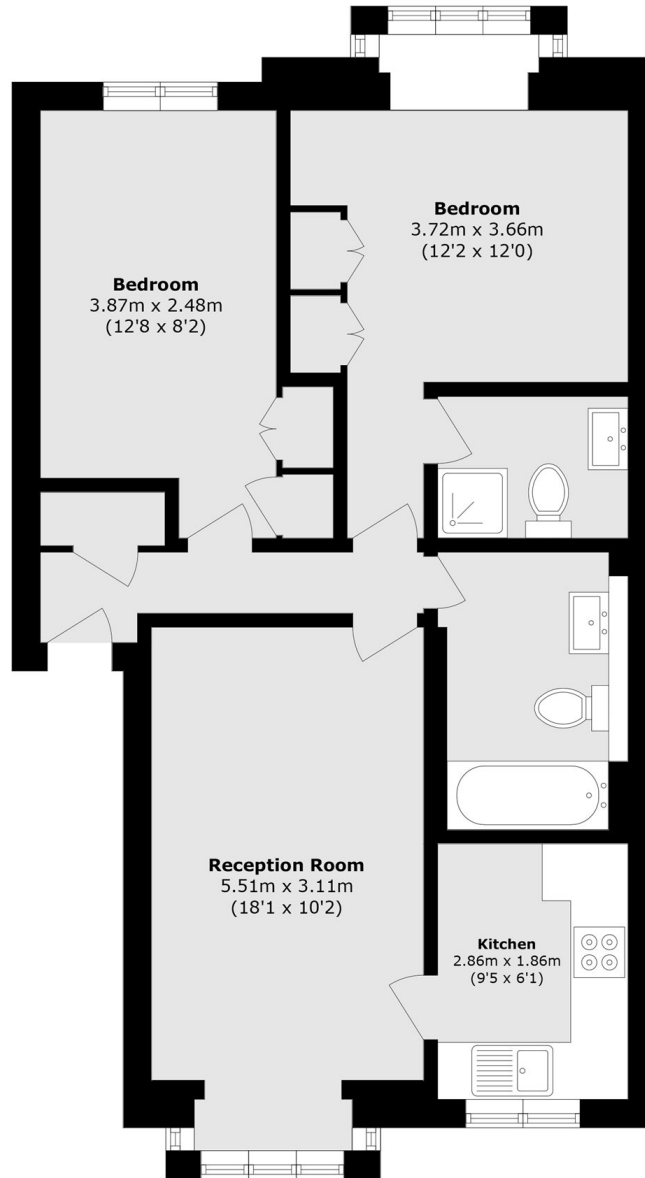
This spacious two double bedroom apartment with a large reception, separate kitchen, modern bathroom and ample storage. The property also benefits from an allocated parking space.

Located less than half a mile from two fitness clubs and Acton Park. East Acton and Acton Central stations are both less than a mile away.

### Features

- Two Double Bedrooms
- First Floor Flat
- Separate Kitchen
- Ample Storage
- Allocated Parking Space
- Close To Tube

# Beechwood Grove, London, W3



Total area (approx.): 61.6 sq. m (663.0 sq. ft)