



Lee High Road, SE12

£400,000

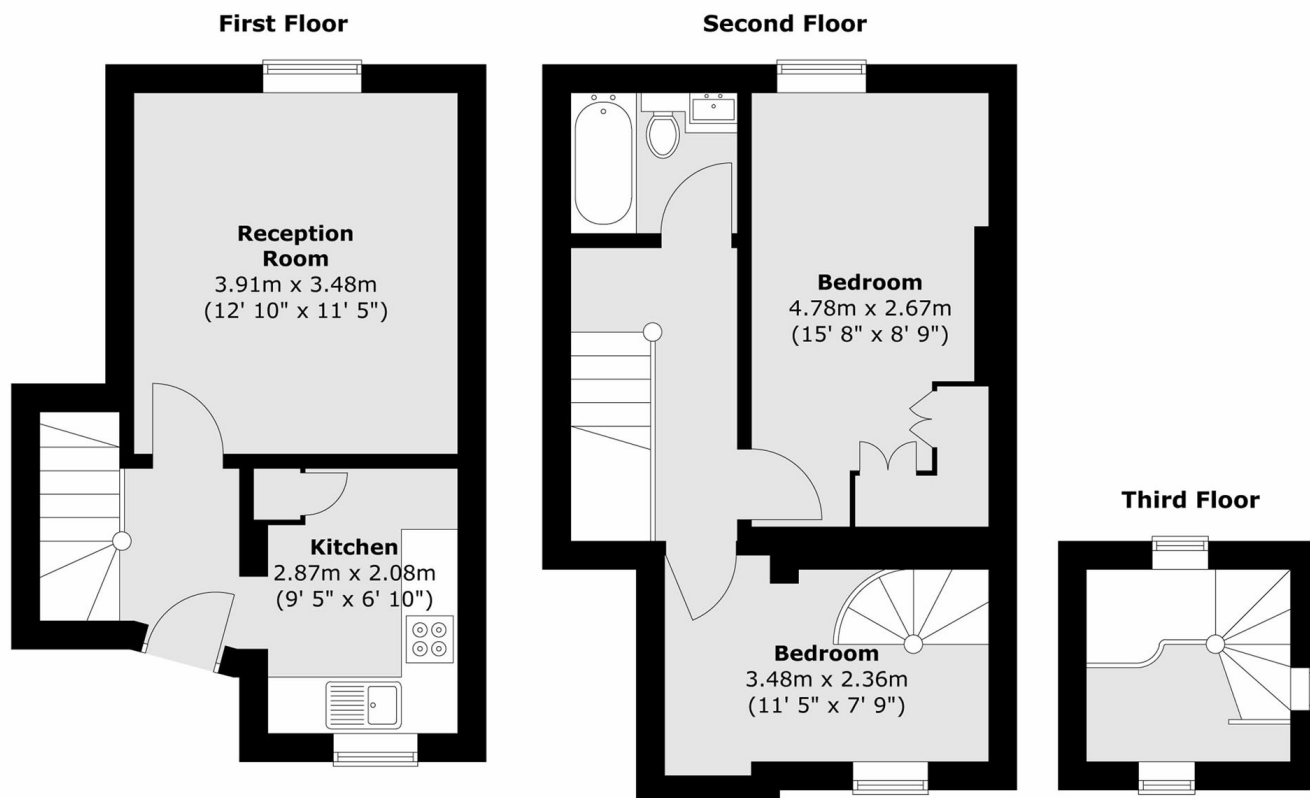
A two bedroom split level period conversion apartment, with a versatile loft area, perfect for an office space or additional storage. With its split-level design and flexible living spaces, this apartment is perfectly suited to first-time buyers, as well as investors. Conveniently located for local amenities and transport links, this is a fantastic opportunity to secure a characterful property with excellent potential. This property also has the added benefit of being sold chain free.

The property is conveniently located on Lee High Road, perfectly positioned between Lewisham, Blackheath and Lee, offering excellent access to a wide range of amenities. Lewisham Shopping Centre is within easy reach for everyday essentials, retail options and transport links, while the open green spaces of Manor House Gardens provide a peaceful retreat just moments away. This well-connected location offers the best of both vibrant town living and leafy

Features

- Chain Free
- Victorian Conversion
- Close To Local Amenities
- Off Street Parking
- Split level
- Two bedroom

Lee High Road,
London, SE12



Total area (approx.) : 60.2 sq. m (648 sq. ft)