



\* No Onward Chain \* This well-presented terraced home offers generous living space, three bedrooms, a versatile study/nursery, and a large south-facing rear garden. The property features a spacious lounge that opens into a kitchen/diner, complemented by two bathrooms and a utility room. Ideally positioned in Shoeburyness, it's close to schools, transport links, amenities and the seafront.

- Well Presented Terraced Home
- Ground Floor Three Piece Shower Room
- Two Double Bedrooms and One Single Bedroom
- Modern Three Piece Bathroom
- Front Lawn
- Bright Lounge Opening into a Kitchen/Diner
- Separate Utility Room
- Versatile Study or Nursery
- Large South Facing Laid to Lawn Rear Garden
- Double Glazing and Gas Central Heating

## Blyth Avenue

Shoeburyness

**£335,000**



# Blyth Avenue



The property welcomes you via an entrance hall leading into a bright lounge that opens seamlessly into a well-proportioned kitchen/diner, perfect for modern family living. A contemporary three-piece shower room and a practical utility room complete the ground floor. Upstairs, the landing provides access to two double bedrooms, one single bedroom and a versatile fourth bedroom used as a study or nursery. A modern three-piece bathroom adds further convenience. Externally, the home boasts a large south-facing rear garden, ideal for entertaining or relaxing, along with a neatly kept front lawn. The property benefits from double glazing and gas central heating throughout, making it both comfortable and efficient.

Located on Blyth Avenue in Shoeburyness, this home lies within catchment for Thorpedene Primary School and Shoeburyness High School, making it ideal for families. The property is within easy reach of local amenities, parks and the seafront, while bus links and Thorpe Bay Train Station provide excellent connections to Southend and London. The area combines coastal living with everyday convenience, offering a peaceful yet well-connected lifestyle.

## **Four Bedroom Terraced House**

### **Entrance Hall**

### **Lounge**

12'8 x 10'11

### **Kitchen/Diner**

19'6 x 8'4

### **Utility Room**

6'5 x 5'7

### **Shower Room**

### **Landing**

### **Bedroom One**

12'9 x 10'7

### **Bedroom Two**

10'1 x 9'10

### **Bedroom Three**

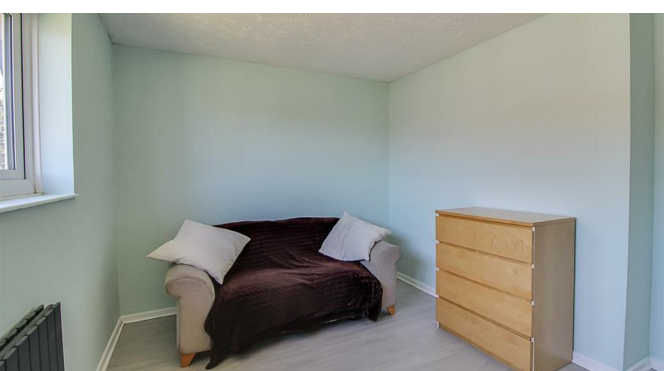
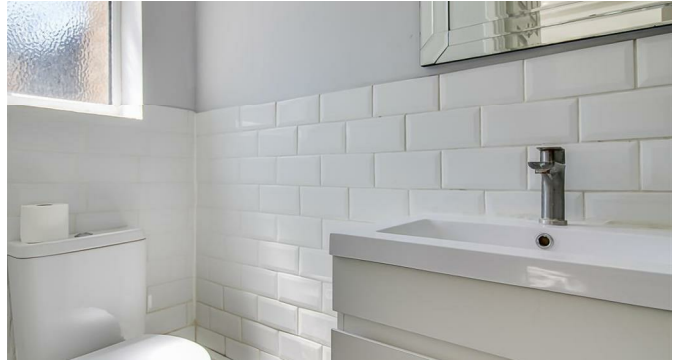
10'9 x 6'5

### **Study/Nursery**

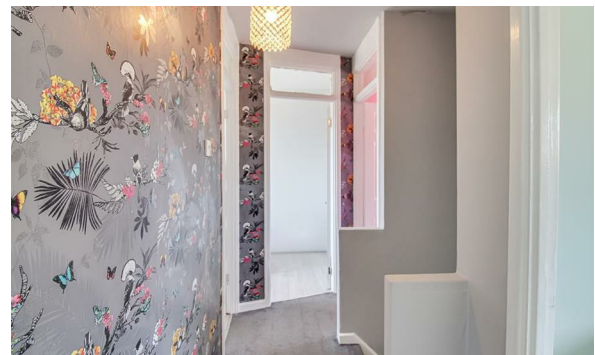
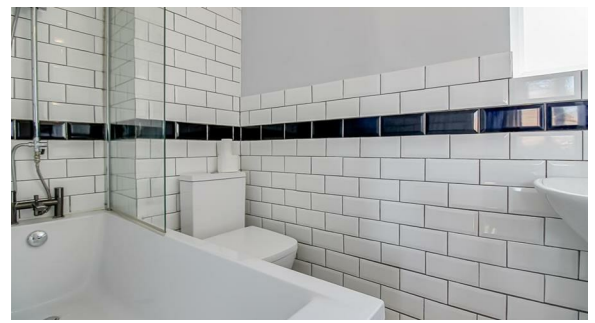
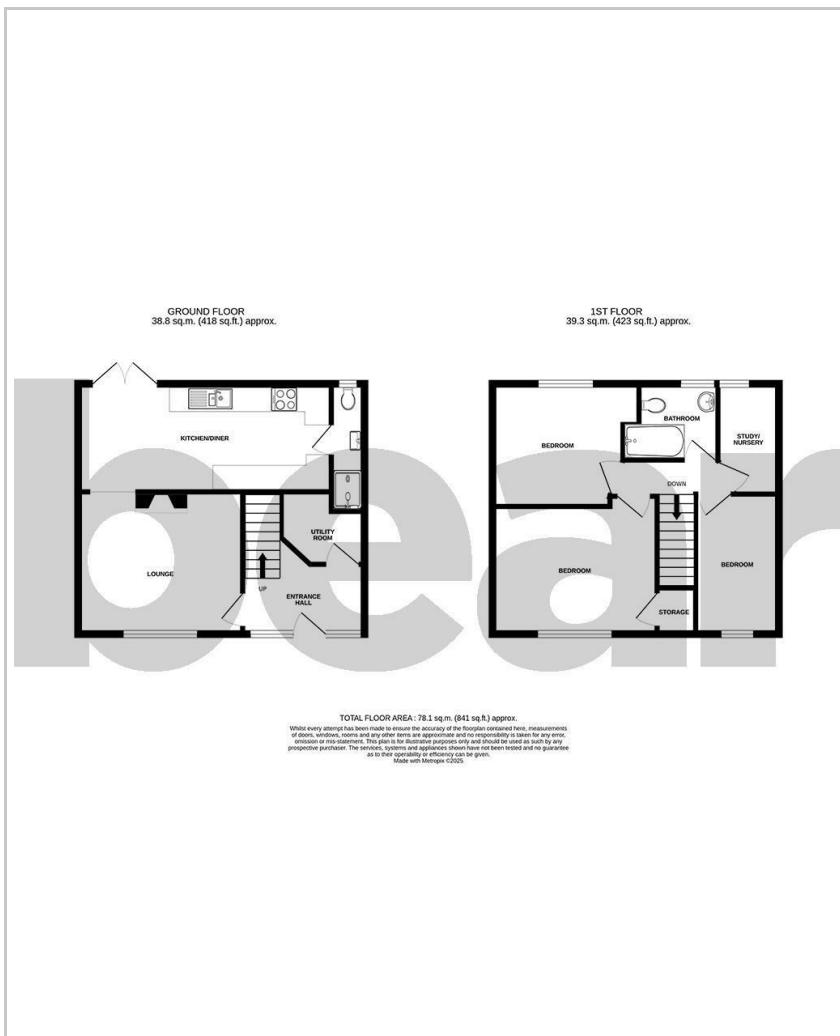
8'7 x 4'8

### **Bathroom**

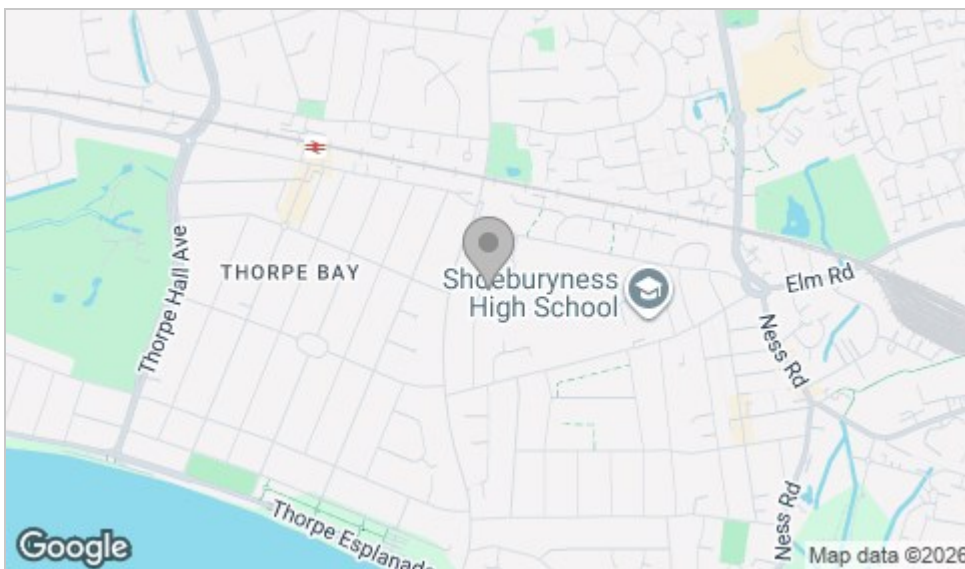
### **South Facing Garden**



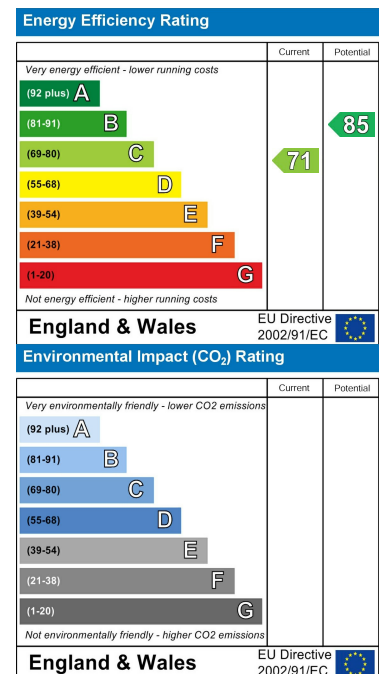
# Floor Plan



# Area Map



# Energy Efficiency Graph



# Viewing

Please contact our Southend-on-Sea Office on 01702 811211 if you wish to arrange a viewing appointment for this property or require further information.

These particulars, whilst believed to be accurate are set out as a general outline only for guidance and do not constitute any part of an offer or contract. Intending purchasers should not rely on them as statements of representation of fact, but must satisfy themselves by inspection or otherwise as to their accuracy. No person in this firm's employment has the authority to make or give any representation or warranty in respect of the property.

204 Woodgrange Drive, Southend-on-Sea, Essex, SS1 2SJ

Office: 01702 811211 [info@bearestateagents.co.uk](mailto:info@bearestateagents.co.uk) <https://www.bearestateagents.co.uk>