

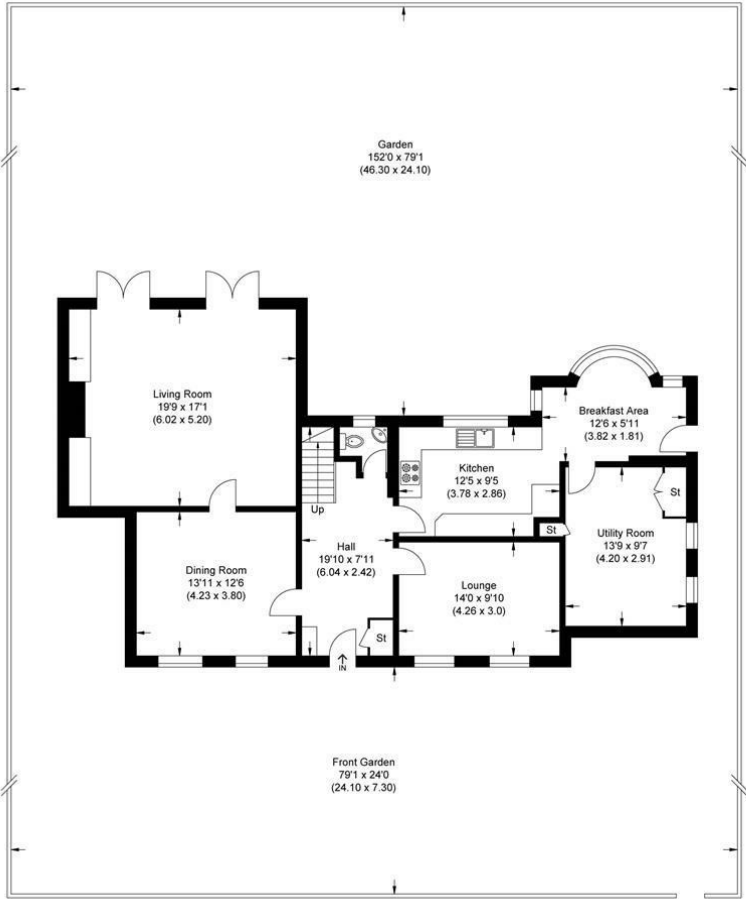
NORTHCLIFFE DRIVE, N20 8JX



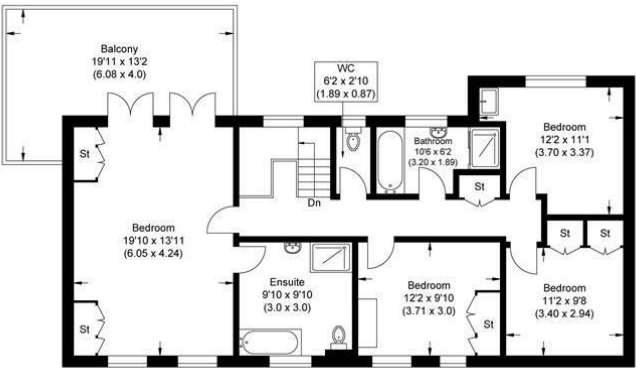
£6,500

- DETACHED
- KITCHEN/BREAKFAST ROOM
- SEPARATE WC
- 2 BATHROOMS
- 150' GARDEN
- 3 RECEPTIONS
- UTILITY ROOM
- 4 BEDROOMS
- BALCONY FROM MASTER BEDROOM
- OFF STREET PARKING

Property Details



Ground Floor



First Floor

Approximate Gross Internal Area
204.99 sq m / 2206.49 sq ft

Illustration for identification purposes only, measurements are approximate, not to scale.

Energy Efficiency Rating		
	Current	Potential
Very energy efficient - lower running costs		
(92 plus) A		
(81-91) B		
(69-80) C		
(55-68) D		
(39-54) E	52	
(21-38) F		
(1-20) G		
Not energy efficient - higher running costs		
England & Wales	EU Directive 2002/91/EC	