



## Woodland Way

**£2,400 Per Month**

Cosway Estates are pleased to offer for rent this stylish and spacious two-bedroom garden flat, located in a beautiful house conversion just moments from the shops at Mill Hill Broadway and within walking distance of Mill Hill Thameslink station.

Finished to an excellent standard, this lovely home features a modern, fully fitted kitchen that opens into a spacious living room, creating a perfect space for relaxing and entertaining. With two generously sized double bedrooms, including an en-suite shower room in the master, plus an additional shower room, this flat offers both comfort and convenience. You also have the added benefit of a parking space for one car. AVAILABLE END OF AUGUST 2026. Viewings highly advised.

### Viewing

Please contact our Mill Hill Office on 02089590011 if you wish to arrange a viewing appointment for this property or require further information.



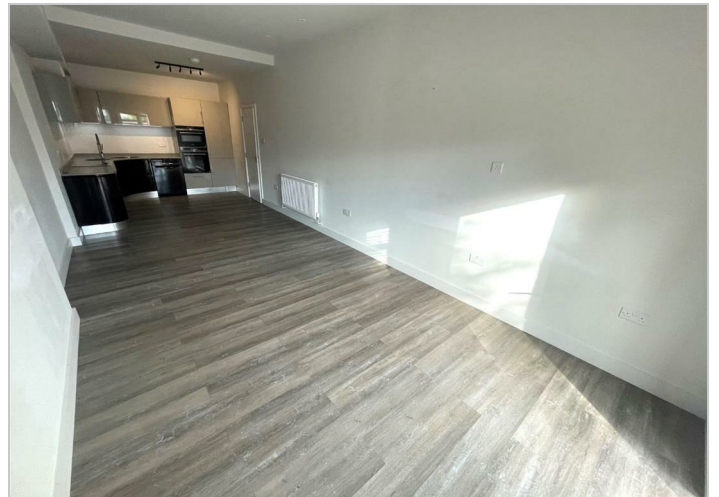
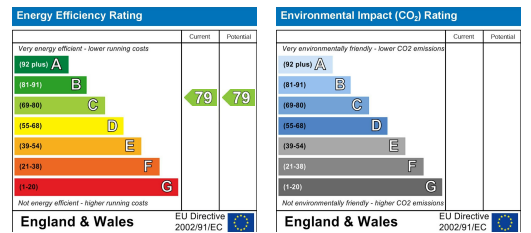
## Floor Plan



## Area Map



## Energy Efficiency Graph



These particulars, whilst believed to be accurate are set out as a general outline only for guidance and do not constitute any part of an offer or contract. Intending purchasers should not rely on them as statements of representation of fact, but must satisfy themselves by inspection or otherwise as to their accuracy. No person in this firm's employment has the authority to make or give any representation or warranty in respect of the property.