





**£390,000**

Located in a quiet cul-de-sac in Tring, with access to local amenities and schools this three-bedroom terraced home is welcomed to the market with the opportunity to renovate. The property consist of lounge/dining room, kitchen, conservatory, upstairs bathroom as well as front and rear gardens, garage and parking.

# Property Description

## **ENTRANCE**

Door to:

## **ENTRANCE HALL**

Radiator, stairs rising to first floor, door to lounge.

## **LOUNGE/DINING ROOM**

Double glazed window to front aspect, double glazed double doors to conservatory.  
Radiator, door to kitchen.

## **CONSERVATORY**

Double glazed double doors to rear.

## **KITCHEN**

Fitted with a range of floor standing units with work surface over, space for cooker with extractor fan over, plumbing for washing machine, plumbing for dishwasher, under stairs storage cupboard, single drainer stainless steel sink with mixer tap.

## **LANDING**

Airing cupboard housing wall-mounted gas combi boiler.

## **BEDROOM ONE**

Two double glazed windows to front aspect. Radiator, built-in wardrobe.

## **BEDROOM TWO**

Double glazed window to rear aspect. Radiator, built-in wardrobe.

## **BEDROOM THREE**

Double glazed window to rear aspect. Radiator, storage cupboard.

## **BATHROOM**

Double glazed frosted window to front aspect. Low level WC, pedestal wash hand basin, radiator, panelled bath with mixer tap.

## **OUTSIDE**

### **GARAGE/PARKING**

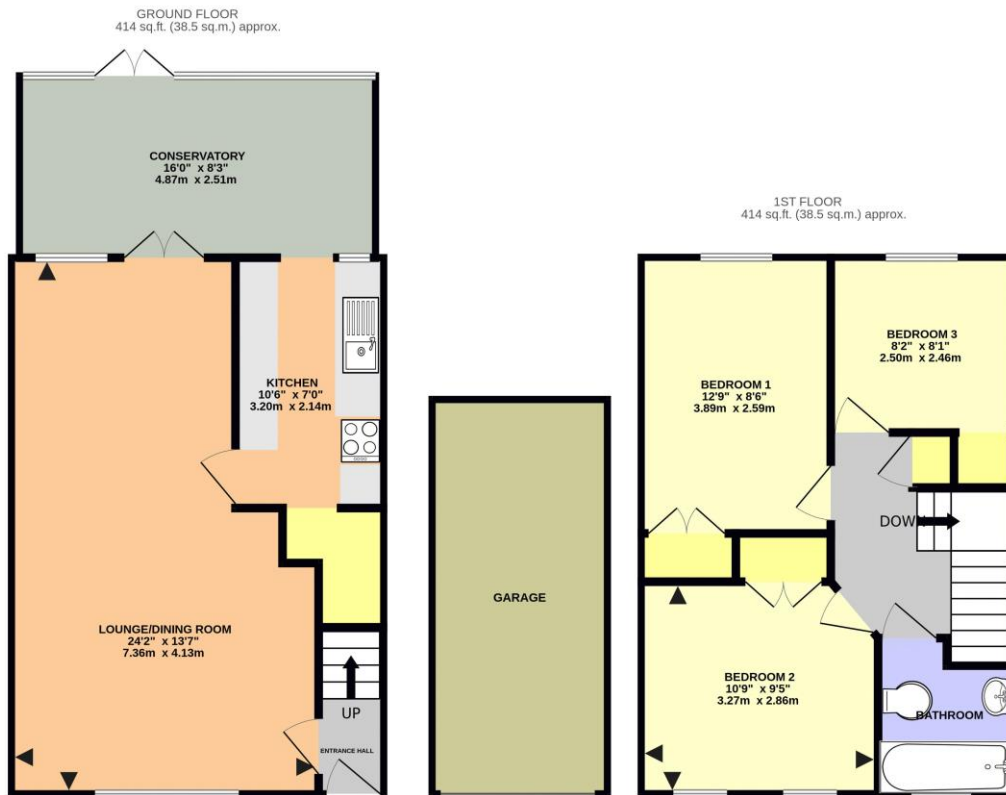
Garage and parking for three cars.

### **FRONT GARDEN**

Mainly laid to lawn with path to front door.

### **REAR GARDEN**

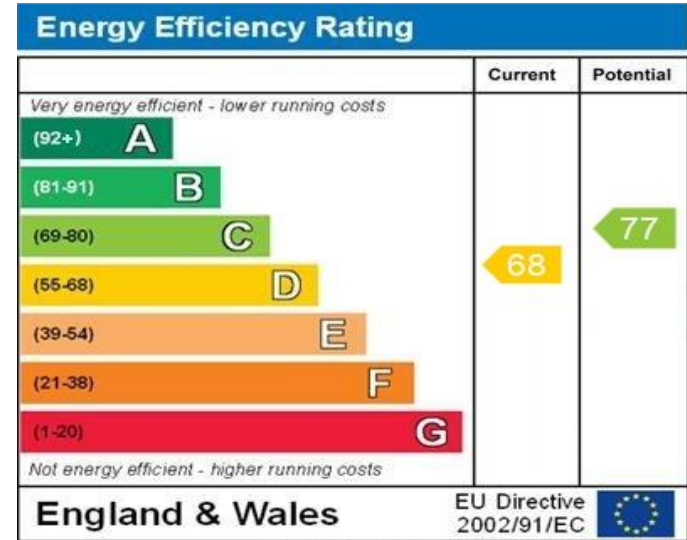
Patio area with path leading to rear access, lawn and gravel areas, outside light and tap.



OKELEY LANE, TRING HP23 4HB (PRODUCED FOR MICHAEL ANTHONY)

TOTAL FLOOR AREA : 829 sq.ft. (77.0 sq.m.) approx.

No accuracy to this image, text or measurements is guaranteed  
Made with Metropix ©2025



WWW.EPC4U.COM

MONEY LAUNDERING REGULATIONS 2017 intending purchasers will be asked to produce identification and proof of financial status when an offer is received. We would ask for your co-operation in order that there will be no delay in agreeing the sale.

THE CONSUMER PROTECTION REGULATIONS 2008 The Agent has not tested any apparatus, equipment, fixtures and fittings or services and so cannot verify that they are in working order or fit for the purpose. A Buyer is advised to obtain verification from their Solicitor or Surveyor. References to the Tenure of a Property are based on information supplied by the Seller. The Agent has not had sight of the title documents. A Buyer is advised to obtain verification from their Solicitor. You are advised to check the availability of this property before travelling any distance to view. We have taken every precaution to ensure that these details are accurate and not misleading. If there is any point which is of particular importance to you, please contact us and we will provide any information you require. This is advisable, particularly if you intend to travel some distance to view the property. The mention of any appliances and services within these details does not imply that they are in full and efficient working order. These particulars are in draft form awaiting Vendors confirmation of their accuracy. These details must therefore be taken as a guide only and approved details should be requested from the agents