



## Park Road, NW1

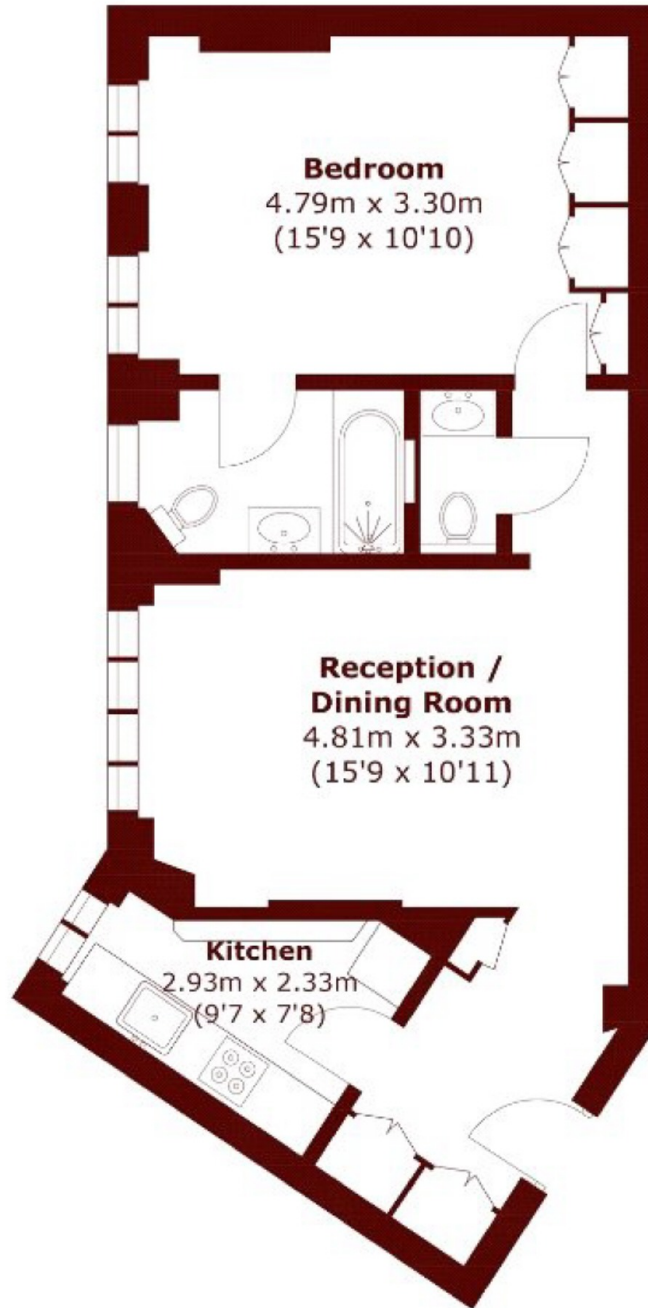
£600,000



- One Double Bedroom
- Additional W/C

- Portered Building
- Lift

- Long Lease
- Meticulously Finished



Total area (approx.): 54.99 sq. m (592 sq. ft)

## Marsh & Parsons Marylebone & Mayfair

94 Baker Street, London,  
W1U 6FZ  
020 7935 1775