

## Newman Passage, W1T

£530 Per week

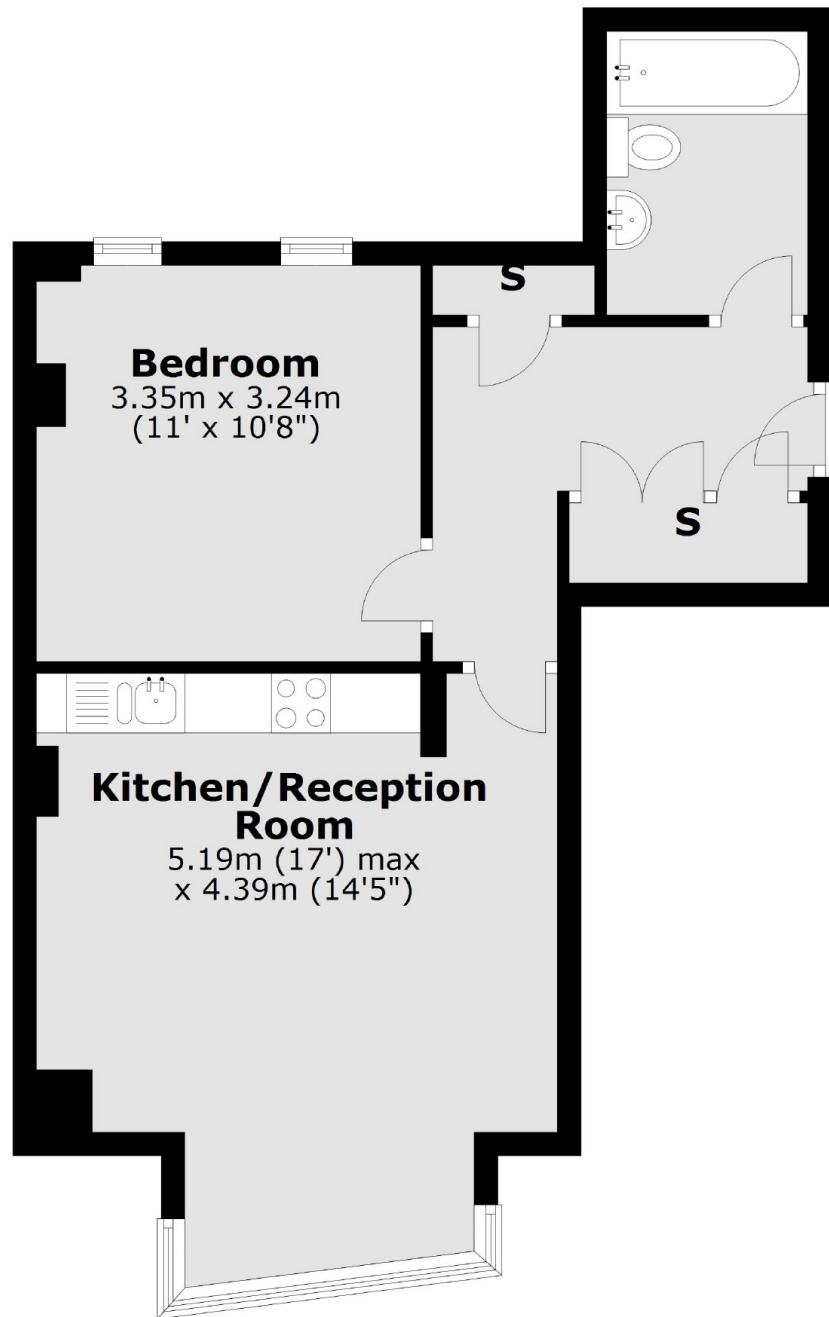
A spacious and contemporary one double bedroom apartment on the first floor of this prestigious building, centrally located in the heart of the West End.

Newman Passage runs north of Oxford Street and up to Goodge Street, making it an ideal location for those who want to be right in the heart of it West End.

### Features

- Large Double Bedroom
- Open Plan Living Room
- Central Location
- Quiet Street
- First Floor
- Lift Access

# Newman Passage, London, W1T



## First Floor

Total area: approx. 44.0 sq. metres (473.6 sq. feet)