

Clifton Walk, W6

£650,000

This two bedroom apartment in a very private mews development, would make a wonderful home. The flat is spacious, well-designed and is on the ground floor with a fantastic reception area and open plan kitchen.

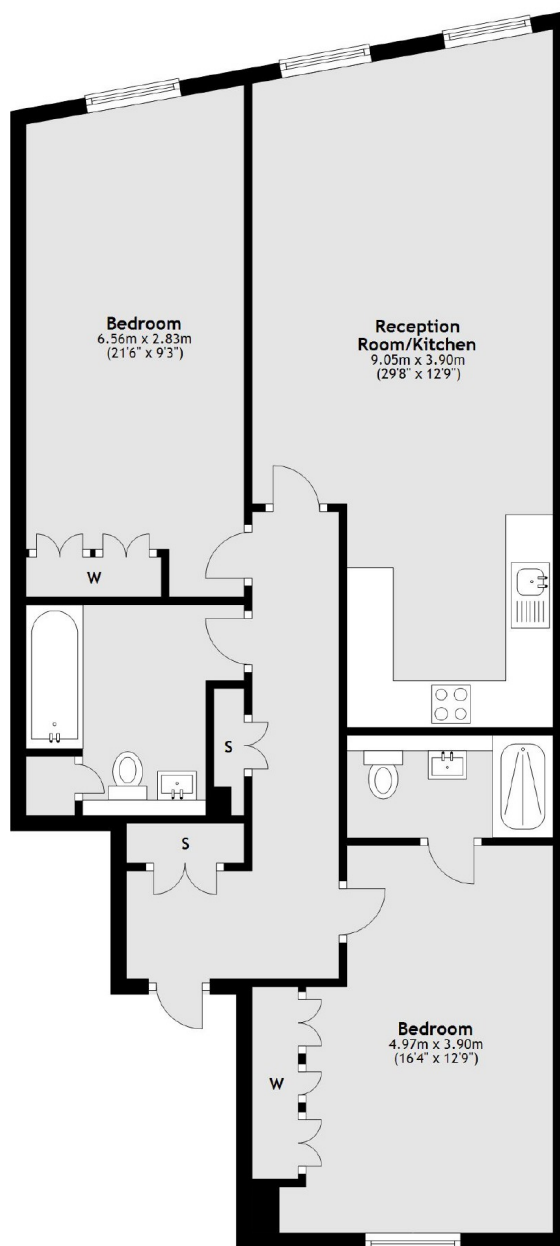
King Street Cloisters, a boutique development in Hammersmith. It is ideally located for Hammersmith's many bars, restaurants, shops and is walking distance from Ravenscourt Park and the River Thames.

Features

- Two Bedrooms
- Two Bathrooms
- Ground Floor
- Secure Development
- Modern Interior
- Heart of Hammersmith

Clifton Walk, London, W6

Ground Floor



Total area: approx. 89.9 sq. metres (967.5 sq. feet)