



## Elms Crescent, SW4

£5,000 Per calendar month

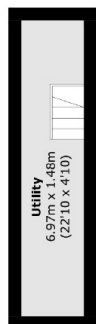
An exceptional five bedroom family home in the heart of Abbeville Village. This attractive property provides spacious living throughout. Offering five double bedrooms, a double reception room and a landscaped garden.

Elms Crescent is located in a residential area, within close walking distance the local cafés, restaurants and shops on Abbeville Road, as well as Clapham South tube station nearby.

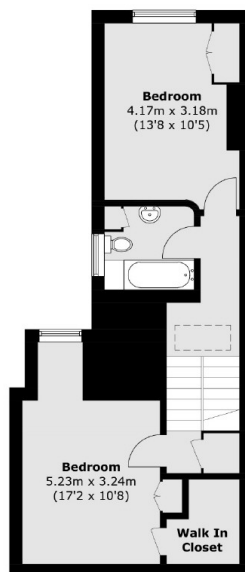
### Features

- Five Double Bedrooms
- Two Bathrooms
- Double Reception Room
- Eat-In Kitchen
- Utility Room/Basement
- Private Garden

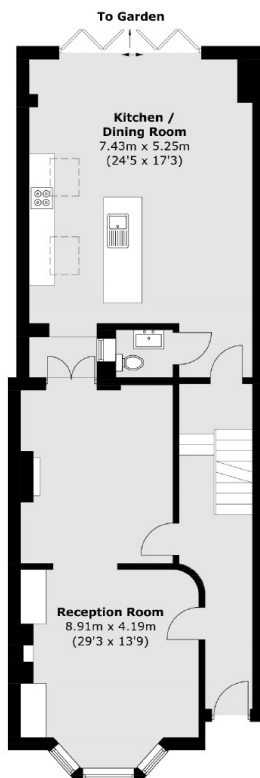
# Elms Crescent, London, SW4



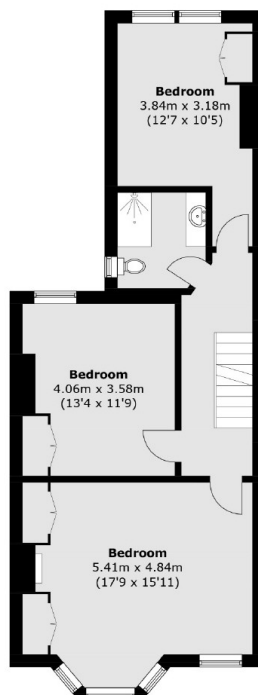
**Cellar**



**Second Floor**



**Ground Floor**



**First Floor**

Total area (approx.): 209.9 sq. m (2,259.2 sq. ft)  
(Including Cellar / Excluding Void)