



Sheen Road, TW10

£775,000

A beautifully presented first-floor apartment with an exceptional south-west facing private roof terrace and private garage, quietly positioned to the rear of an elegant period building moments from Richmond Park. The property has been stylishly modernised to a high specification throughout and offers superb entertaining space, peaceful leafy views and an abundance of natural light.

Moments from Richmond Park and close to the cafés, boutiques and restaurants of Richmond Town Centre, Richmond Hill and Richmond Riverside, the apartment also benefits from excellent links to central London via Richmond Station.

Features

- Two Double Bedrooms
- Modern Interior
- Roof Terrace
- Garage
- No Onward Chain
- Share Of Freehold



Sheen Road, TW10

Offering a rare combination of peace and privacy alongside the vibrancy of one of London's most sought-after neighbourhoods, the apartment is both tranquil and exceptionally well located.

The accommodation comprises two generous double bedrooms, a sleek contemporary bathroom, a modern fitted kitchen, and an impressive reception room that flows seamlessly onto the terrace. The living space is bright and open throughout the day, enhanced by natural light from multiple aspects.

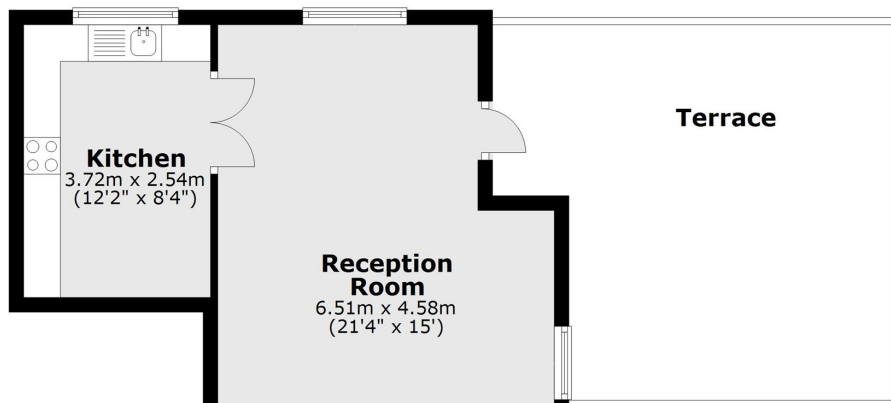
The private south-west facing roof terrace extends to approximately 25 sq m and enjoys uninterrupted tree-lined views, capturing the sun from midday into the evening and creating an exceptional space for outdoor dining and entertaining.

A private garage provides secure parking or valuable additional storage, a highly sought-after feature in this location. The property is offered with a share of freehold and approximately 965 years remaining on the lease.

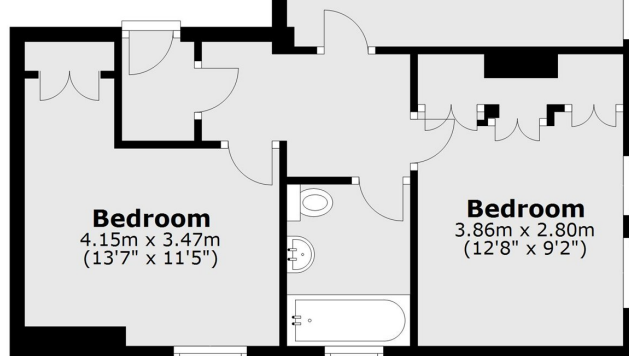
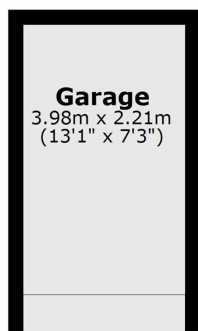


Sheen Road, Richmond, TW10

First Floor



Ground Floor



Main area: Approx. 70.6 sq. metres (759.4 sq. feet)
Plus garages, approx. 8.8 sq. metres (94.6 sq. feet)