



COBALT PLACE, SW11

£2,300 per month

Superb development
Great transport links
Fantastic location
Open plan reception
Large balcony
Wooden flooring

@marshandparsons
marshandparsons.co.uk

MARSH &
PARSONS



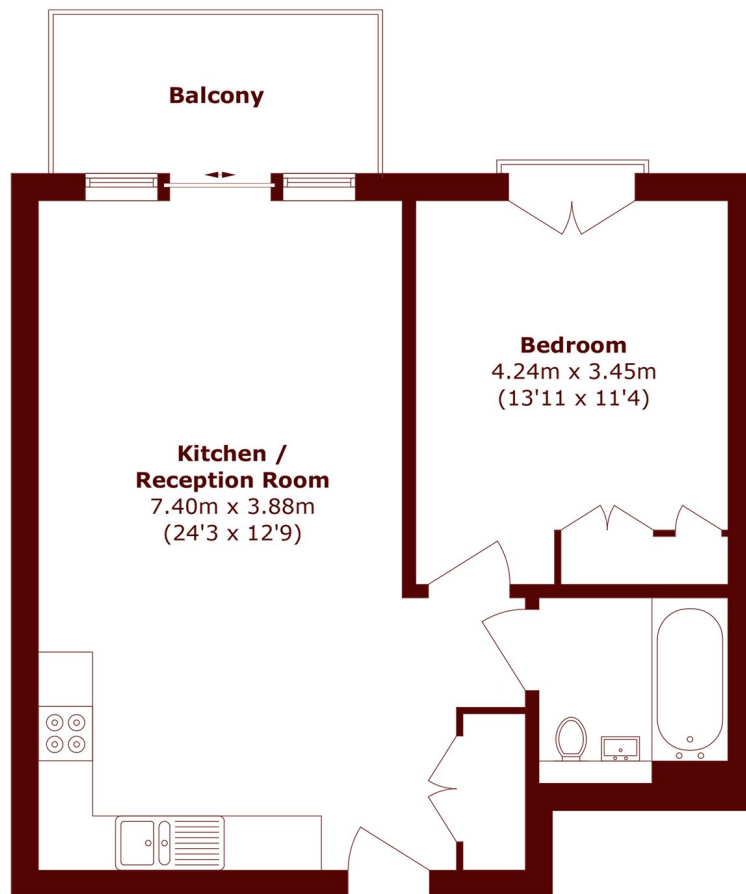
ABOUT THE PROPERTY

Set within the sought-after Cobalt Place development, this stunning first-floor apartment is beautifully presented throughout and offers modern living in the heart of Battersea. The property features a spacious open-plan kitchen and reception room with sleek integrated appliances, opening onto a private balcony, a generous double bedroom, and a contemporary family bathroom with a shower over the bath. Further benefits include double-glazed windows, fresh air ventilation, underfloor heating, wooden flooring, lift access, secure bike storage, an entry phone system, and a gated security entrance.

Perfectly positioned, the shops, cafés, and restaurants of Battersea High Street are right on your doorstep, while



STEP INSIDE COBALT PLACE



Total area (approx.): 54.2 sq. m (583.4 sq. ft)
Balcony area (approx.): 6.3 sq. m (67.8 sq. ft)

Battersea
020 7228 9292

Energy Rating: C We aim to make our particulars both accurate and reliable. However, they are not guaranteed; nor do they form part of an offer or contract. If you require clarification on any points then please contact us, especially if you're traveling some distance to view. Please note that appliances and heating systems have not been tested and therefore no warranties can be given as to their good working order

**MARSH &
PARSONS**