



## Balham Hill, SW12

£2,200 Per calendar month

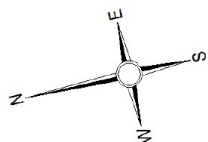
A ground floor one bedroom, new build apartment in the heart of Clapham South. Finished to a high specification throughout with wooden flooring, built-in storage, a bathroom and a spacious outdoor area.

Located on Balham Hill, offering access to the many convenience stores and supermarkets of Clapham South, as well as the shops and boutiques of Abbeville Road.

### Features

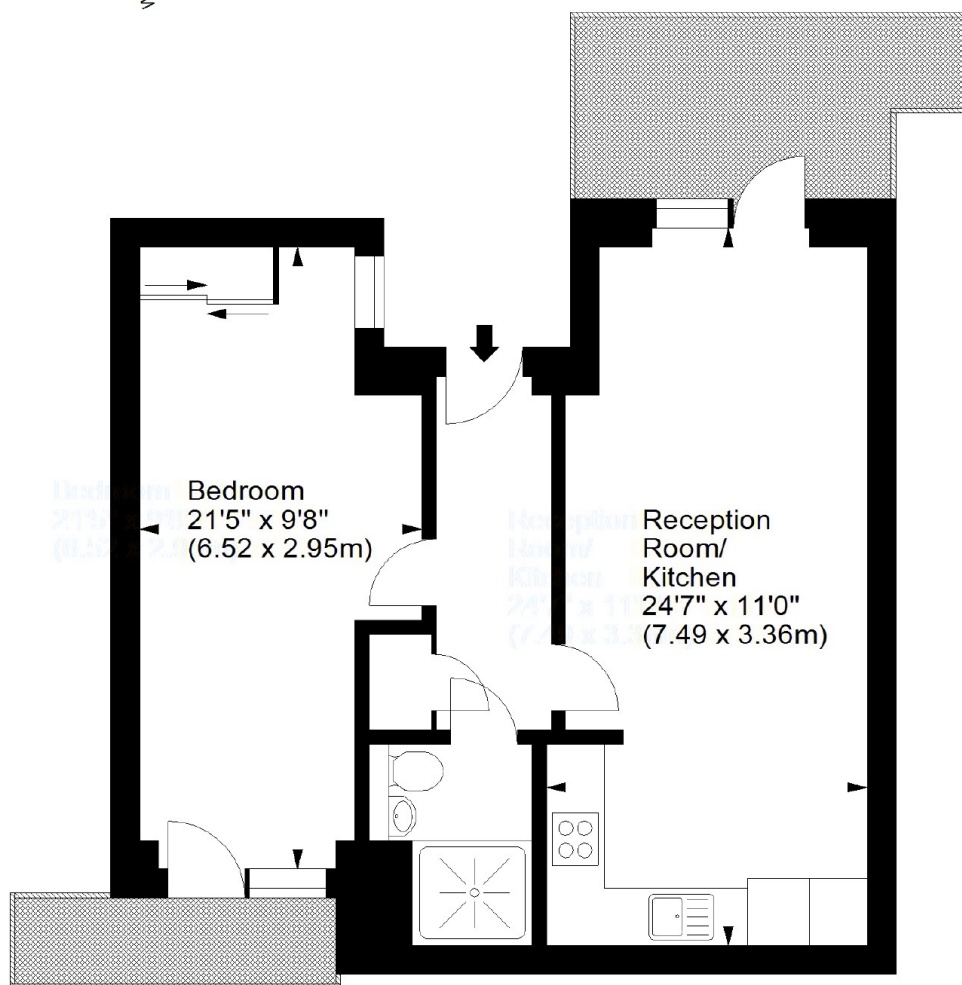
- One Double Bedroom
- Ground Floor Flat
- High Specification
- Open Plan Reception
- Modern Kitchen
- Private Outdoor Area

# Balham Hill, London, SW12



## Stableyard Apartments, SW12

Approx. Gross Internal Area  
533 Sq Ft - 49.52 Sq M



### Ground Floor

For illustration purposes only. Not to scale.  
All measurements are taken and shown at floor level.  
[www.r3photography.co.uk](http://www.r3photography.co.uk) © Photography / Floor Plans / Lease Plans / EPCs

# Dexters

Clapham South & Balham  
9 Cavendish Parade  
London  
SW4 9DP  
Lettings  
0208 675 6750

Energy Rating: B. We aim to make our particulars both accurate and reliable. However they are not guaranteed; nor do they form part of an offer or contract. If you require clarification on any points then please contact us, especially if you're traveling some distance to view. Please note that appliances and heating systems have not been tested and therefore no warranties can be given as to their good working order.



[dexters.co.uk](http://dexters.co.uk)