

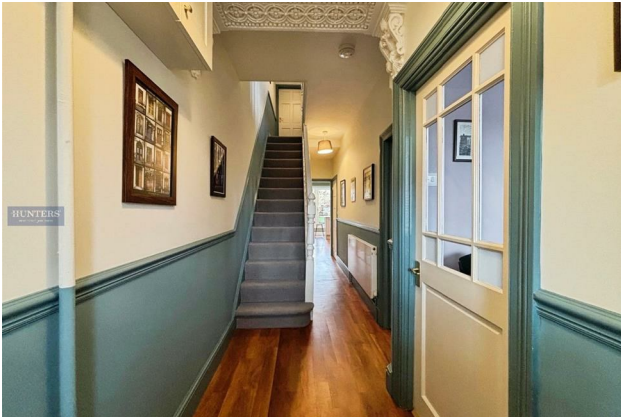
HUNTERS®

HERE TO GET *you* THERE

50 Jubilee Road, Knowle, Bristol, BS4 2LP

£550,000

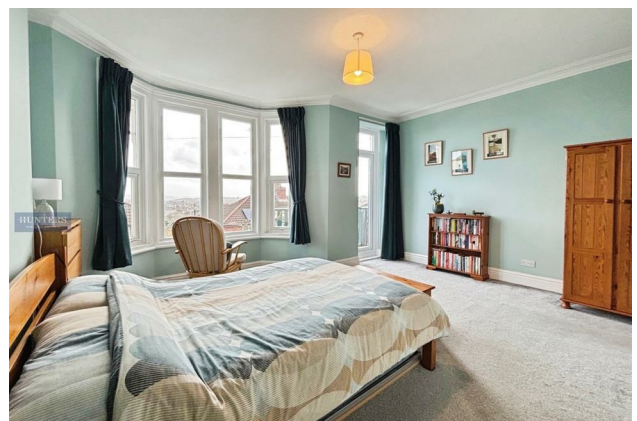
Property Images



HUNTERS[®]

HERE TO GET *you* THERE

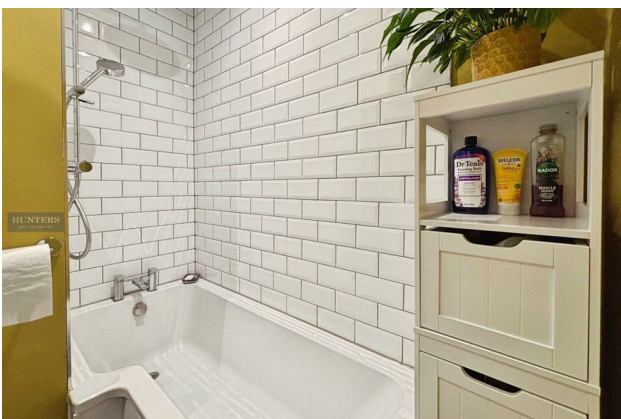
Property Images



HUNTERS[®]

HERE TO GET *you* THERE

Property Images



HUNTERS®

HERE TO GET *you* THERE

Property Images



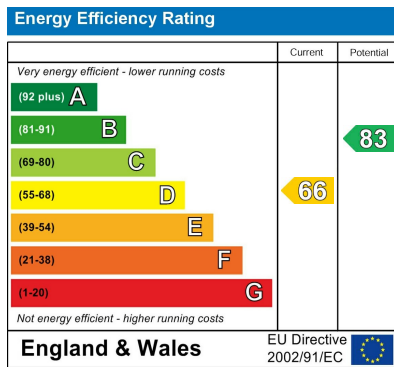
HUNTERS®

HERE TO GET *you* THERE



Whilst every attempt has been made to ensure the accuracy of the floorplan contained herein, measurements of doors, windows, rooms and any other items are approximate and no responsibility is taken for any errors, omissions or mis-statements. This plan is for illustrative purposes only and should be used as such by any prospective purchaser. The services, systems and appliances shown have not been tested and no guarantee, as to their operability or efficiency can be given.
Made with floorplan.com

EPC



Map



Details

Type: House - Terraced Beds: 3 Bathrooms: 1 Receptions: 2 Tenure: Freehold

Summary

A Three bedroom home on Jubilee Road in the charming area of Knowle, Bristol, this delightful double bay-fronted Edwardian terraced house, offers a perfect blend of modern comfort and classic elegance. This property boasts three well-proportioned bedrooms and two inviting reception rooms, making it an ideal home for families or those seeking extra space.

The house has undergone thoughtful modern renovations, ensuring that it meets the needs of contemporary living while preserving its original features that add character and charm. The recently remodelled kitchen is a standout feature, providing a bright and spacious area for cooking and entertaining. Additionally, the property includes a convenient utility room and a W/C, enhancing functionality for everyday life.

Another standout feature of this property is the sun trap rear garden, which offers a serene outdoor retreat, ideal for enjoying sunny afternoons or hosting summer barbecues. The garden is surprisingly private, backing onto long gardens behind and benefitting from mature planting on all three sides. It provides a wonderful space for children to play or for gardening enthusiasts to cultivate their green thumbs.

Situated in a great location, residents will benefit from easy access to local amenities such as Jubilee Swimming Pool & Gym, parks, and transport links making it a desirable spot for both relaxation and commuting. This gem is not just a house; it is a home filled with warmth and potential, perfect for those looking to settle in a vibrant community.

Don't miss the opportunity to make this lovely property your own. Contact us today to arrange your internal viewing on 0117 9723948 or knowle.bristol@hunters.com

Please note that images 2 and 6 were provided by the seller, taken previous to the time of listing.

Features

- Edwardian Terraced House
- Three Bedrooms
- Recently Remodelled Kitchen and Bathroom
- Lounge/Diner
- Ground Floor W/C
- Utility Room
- Original Features
- Desirable Location
- Close to Local Amenities, Transport Links and Schools
- On Street Parking