



## Honor Oak Park, SE23

£375,000

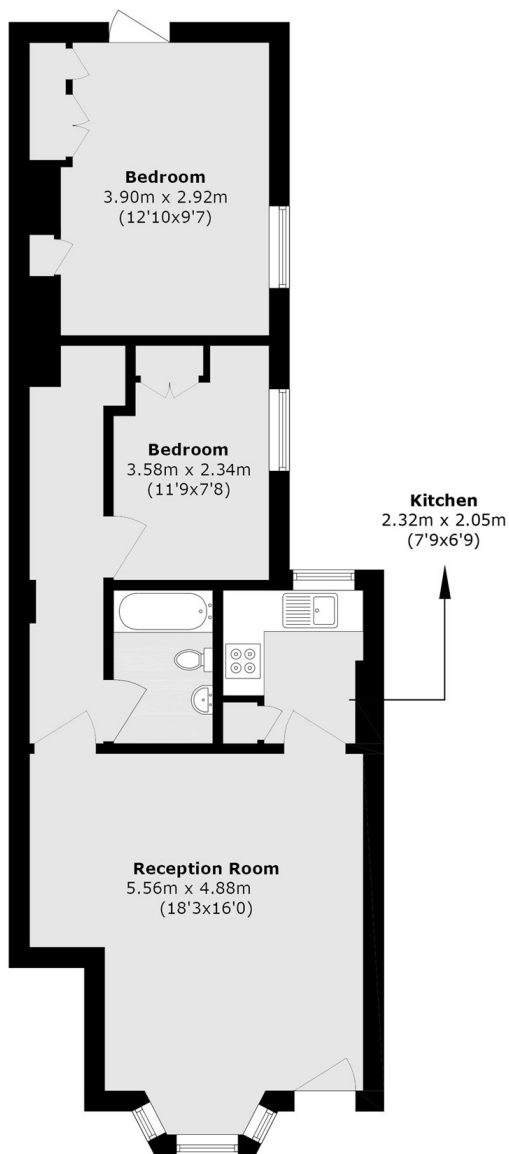
A beautifully presented two bedroom ground floor flat with a share of freehold, perfectly positioned in a sought after location moments from excellent transport links, independent shops, cafés, open green spaces and offered chain free.

Ideally located in the heart of Honor Oak Park, the property is moments from Honor Oak Park Station, offering Overground and mainline services to London Bridge, Canada Water, and beyond. It is also close to Crofton Park Station, providing convenient Thameslink services to Blackfriars, Farringdon, and London St Pancras. Residents enjoy easy access to green spaces including One Tree Hill, Peckham Rye Park, and Blythe Hill Fields. The nearby high street offers a great mix of independent cafés, restaurants, and shops, creating a vibrant village feel.

### Features

- Ground Floor
- Two Bedrooms
- Private Garden
- Share Of Freehold
- Close To Stations
- Chain Free

# Honor Oak Park, London, SE23



Total area (approx.): 62.3 sq. m (670.6 sq. ft)