



Cripple Street, Maidstone, ME15 6BA
Guide Price £650,000

GUIDE PRICE £650,000 – £700,000 EXTENDED FOUR DOUBLE BEDROOM DETACHED HOME IN A PRIME VILLAGE POSITION.

A superb four double bedroom detached family home with off-road parking, integral garage and a private rear garden, enjoying attractive views over the Loose Valley Conservation Area.

The property is well presented throughout and offers generous accommodation arranged over two floors. The ground floor comprises an entrance hall, an impressive open plan kitchen/diner across the rear of the property, a spacious living room enhanced by a double storey extension, a useful utility room, ground floor cloakroom and integral garage.

Upstairs, there are four double bedrooms, with the main bedroom being of a particularly good size and benefiting from an ensuite bathroom with separate bath and shower. A family bathroom completes the internal accommodation.

Externally, the property offers a driveway providing parking for several vehicles to the front, while the neatly enclosed rear garden features a lawn, established borders, summer house and a covered jacuzzi area.

Situated in the highly sought-after village of Loose, the property is within walking distance of a wide range of local amenities including Sainsbury's, GP surgeries, the YMCA Sports and Community Centre, local shops, pubs, hairdressers and popular primary and secondary schools.

Viewing is highly recommended. Contact Page & Wells, Loose Office today to arrange your appointment.



GROUND FLOOR

Entrance Hall

Downstairs Cloakroom

Lounge 24'8" x 12'6" (7.53m x 3.82m)

Dining Room 23'3" x 11'10" (7.10m x 3.63m)

Kitchen 20'11" x 14'7" (6.39m x 4.47m)

Utility Room 8'5" x 4'11" (2.57m x 1.51)

FIRST FLOOR

Bedroom 1 18'7" x 13'1" (5.67m x 3.99m)

En-Suite

Bedroom 2 13'11" x 9'5" (4.26m x 2.88m)

Bedroom 3 11'10" x 10'0" (3.62m x 3.05m)

Bedroom 4 9'5" x 7'11" (2.89m x 2.43m)

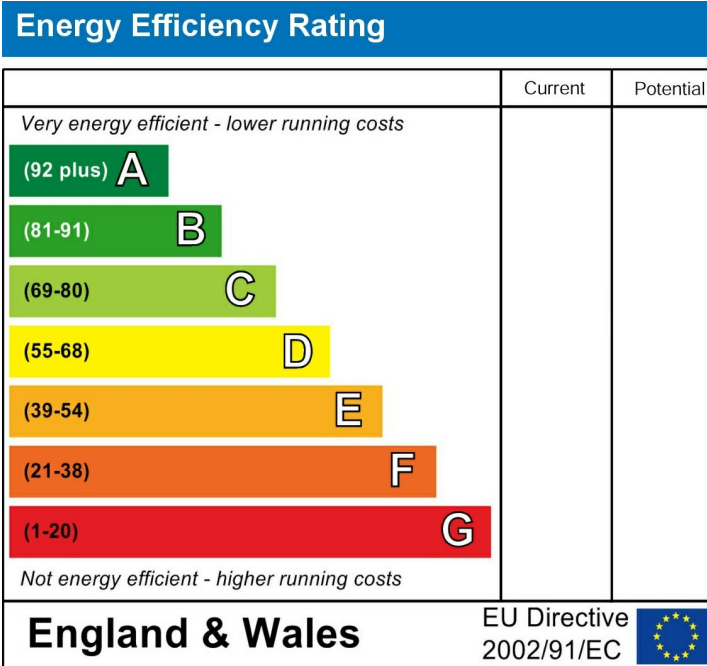
Family Bathroom

EXTERNALLY

Garage 18'4" x 13'4" (5.60m x 4.07m)

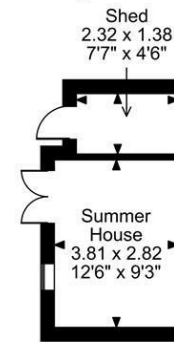
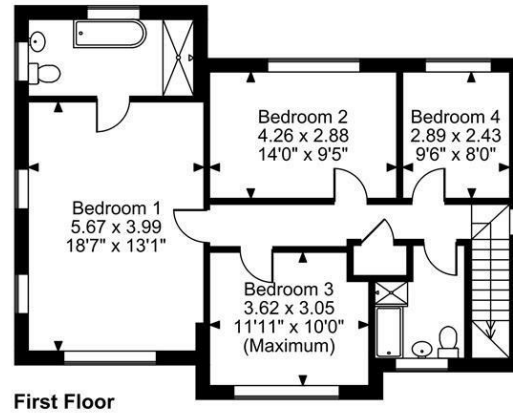
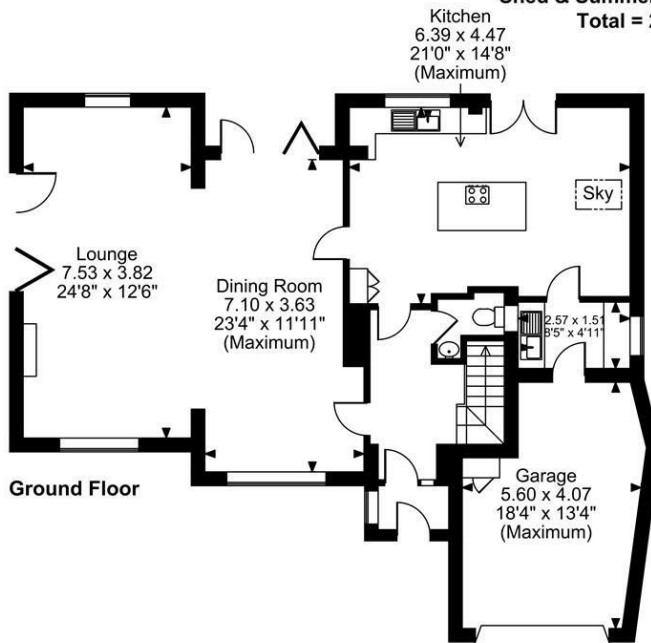
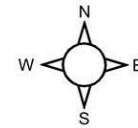
Summer House 12'5" x 9'3" (3.81m x 2.82m)

Shed 7'7" x 4'6" (2.32m x 1.38m)



Page & Wells limited for themselves and for the vendors of this property whose agents they are give notice that: 1. These particulars do not constitute any part of, an offer or a contract. 2. All statements contained in these particulars as to this property are made without responsibility on the part of Page & Wells Limited or the Vendor. 3. None of the statements contained in these particulars as to the property is to be relied on as statements or representations of fact. 4. Any intending purchaser must satisfy himself by inspection or otherwise as to the correctness of each of the statements contained in these particulars. 5. The vendor does not make or give, and neither Page & Wells Limited nor any person in their employment has any authority to make or give any representation whatsoever in relation to this property. These particulars are supplied on the understanding that all negotiations are carried out throughout Page & Wells Limited. Properties with a reference prefixes EAA are those which Page & Wells Limited disclose an interest in accordance with the provisions of the Estates Agents Act 1979

Lugano, Cripple Street, Maidstone
Approximate Gross Internal Area
Main House = 1894 Sq Ft/176 Sq M
Garage = 214 Sq Ft/20 Sq M
Shed & Summer House = 153 Sq Ft/14 Sq M
Total = 2261 Sq Ft/210 Sq M



FOR ILLUSTRATIVE PURPOSES ONLY - NOT TO SCALE
 The position & size of doors, windows, appliances and other features are approximate only.
 © ehouse. Unauthorised reproduction prohibited. Drawing ref. dig/8679031/LCO

