



Marcus Street  
London, SW18

CHESTERTONS





The property is tastefully decorated throughout and offers a wealth of period features plus a private garden.

The flat provides light and airy accommodation extending to approximately 557 square feet. There are two well-proportioned double bedrooms, complemented by high ceilings and built-in wardrobes. The bathroom has a modern finish and offers excellent storage.

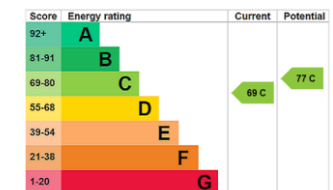
To the rear is a spacious kitchen/dining/reception room fitted with contemporary integrated appliances. Double doors open directly onto a private, well-maintained garden, ideal for outdoor dining and entertaining.

Marcus Street is conveniently situated within close proximity of the wealth of shops, cafés, restaurants and bars of Old York Road and the Southside Shopping Centre.

Wandsworth Town and Clapham Junction mainline stations are both within easy walking distance.

- Beautifully presented period garden flat
- Private garden
- Immaculately finished throughout
- Approximately 557 sq. ft.
- Fully renovated interior
- Close to the amenities on Old York Road

Asking price £550,000



**Tenure:** Leasehold 170 years remaining

**Service Charge:** £1124 per annum

**Local Authority:** Wandsworth Council

**Council Tax Band:** D

*Chestertons Wandsworth Sales*

47 East Hill

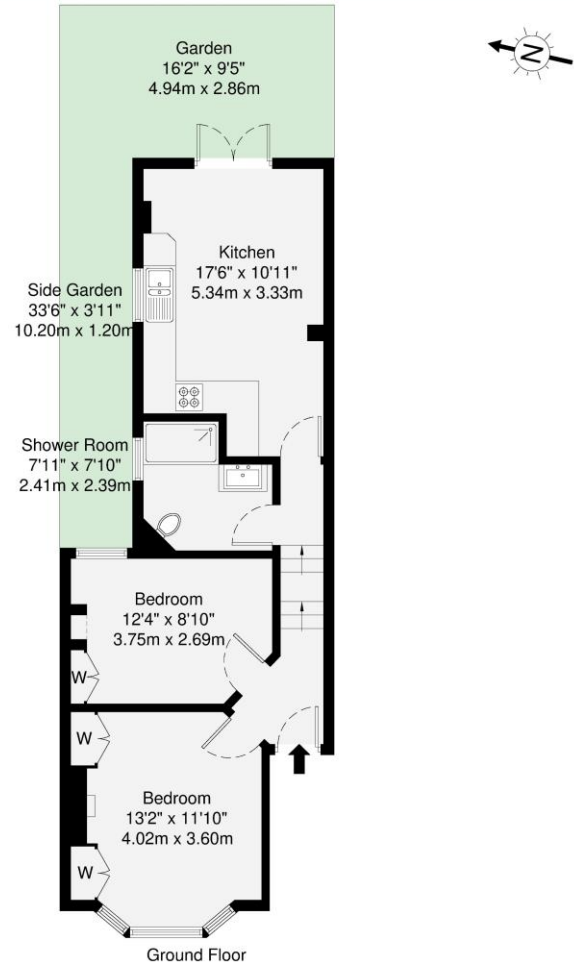
London

SW18 2QE

wandsworth@chestertons.co.uk

0208 104 7530

chestertons.co.uk



**GROSS INTERNAL AREA (GIA)**  
The footprint of the property  
51.8 sq m / 557 sq ft

**TOTAL STORAGE SPACE**  
Storage and wardrobe total area  
1.3 sq m / 14 sq ft

**EXTERNAL FEATURES**  
Garden, Balcony, Terrace, Verandah etc.  
26.3 sq m / 283 sq ft

**RESTRICTED HEAD HEIGHT**  
Limited use area under 1.5m  
0.0 sq m / 0.0 sq ft

Disclaimer: Floorplan measurements are approximate and are for illustrative purposes only. While we do not doubt the floorplan accuracy and completeness, you or your advisors should conduct a careful, independent investigation of the property in respect of monetary valuation.

Maison  
VUE

