



Guide Price
£525,000

Freehold

4x  3x  1x 

Prime View, New
Romney, Kent, TN28

OVER 60?

Secure this property
for up to **59% less!**

Wards
Helping you move forwards



Main features

- Truly exceptional family home
- High-end fittings and fixtures
- Quiet mews location close to local beach and countryside walks
- Spacious accommodation throughout
- Currently serves as a holiday let

Accommodation

GROUND FLOOR

Entrance Hall
 Kitchen/Diner: 20'7 x 17'6 (6.28m x 5.34m)
 Cloakroom

FIRST FLOOR

Landing
 Lounge: 20'7 x 17'5 (6.28m x 5.31m)
 Bedroom 3: 10'4 x 9'2 (3.15m x 2.80m)
 Bedroom 4: 11'3 x 9'7 (3.43m x 2.92m)
 Bathroom

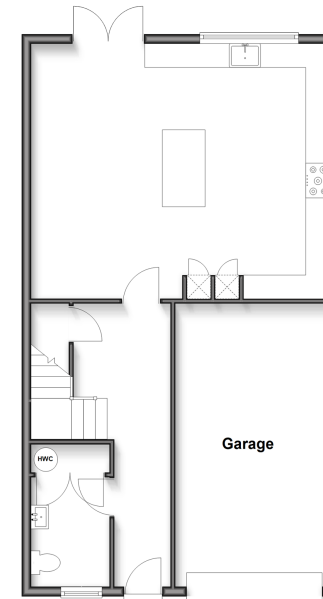
SECOND FLOOR

Landing
 Bedroom 1: 18'0 x 17'5 (5.49m x 5.31m)
 En-Suite Shower Room
 Bedroom 2: 18'4 x 9'8 (5.59m x 2.95m)
 En-Suite Shower Room

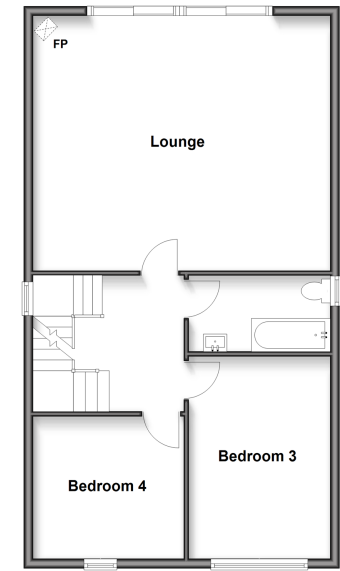
OUTSIDE

Integral Garage
 Off Road Parking
 Front & Rear Gardens

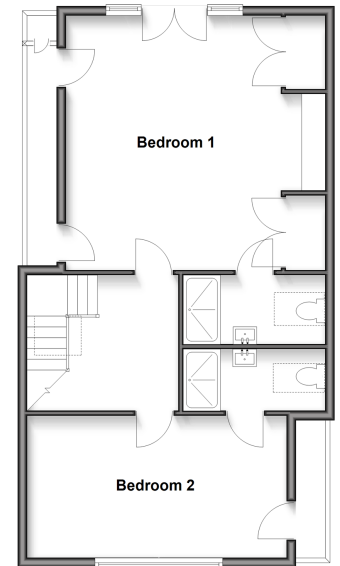
Ground Floor
 Approx. 72.2 sq. metres (777.4 sq. feet)



First Floor
 Approx. 72.2 sq. metres (777.4 sq. feet)



Second Floor
 Approx. 66.1 sq. metres (732.8 sq. feet)



Call New Romney - 01797 363745 ■ wardsokent.co.uk

- Legal advice should be taken to verify fixtures/fittings, planning, alterations and/or lease details
- Appliances & services are untested, dimensions are approximate and floor plans are not to scale
- Through a Homewise Home For Life Plan people aged 60+ can secure this property for up to 59% less, by purchasing a Lifetime Lease.



13525720/20250704/AH/CA