



John Donne Way, SE10

£450,000

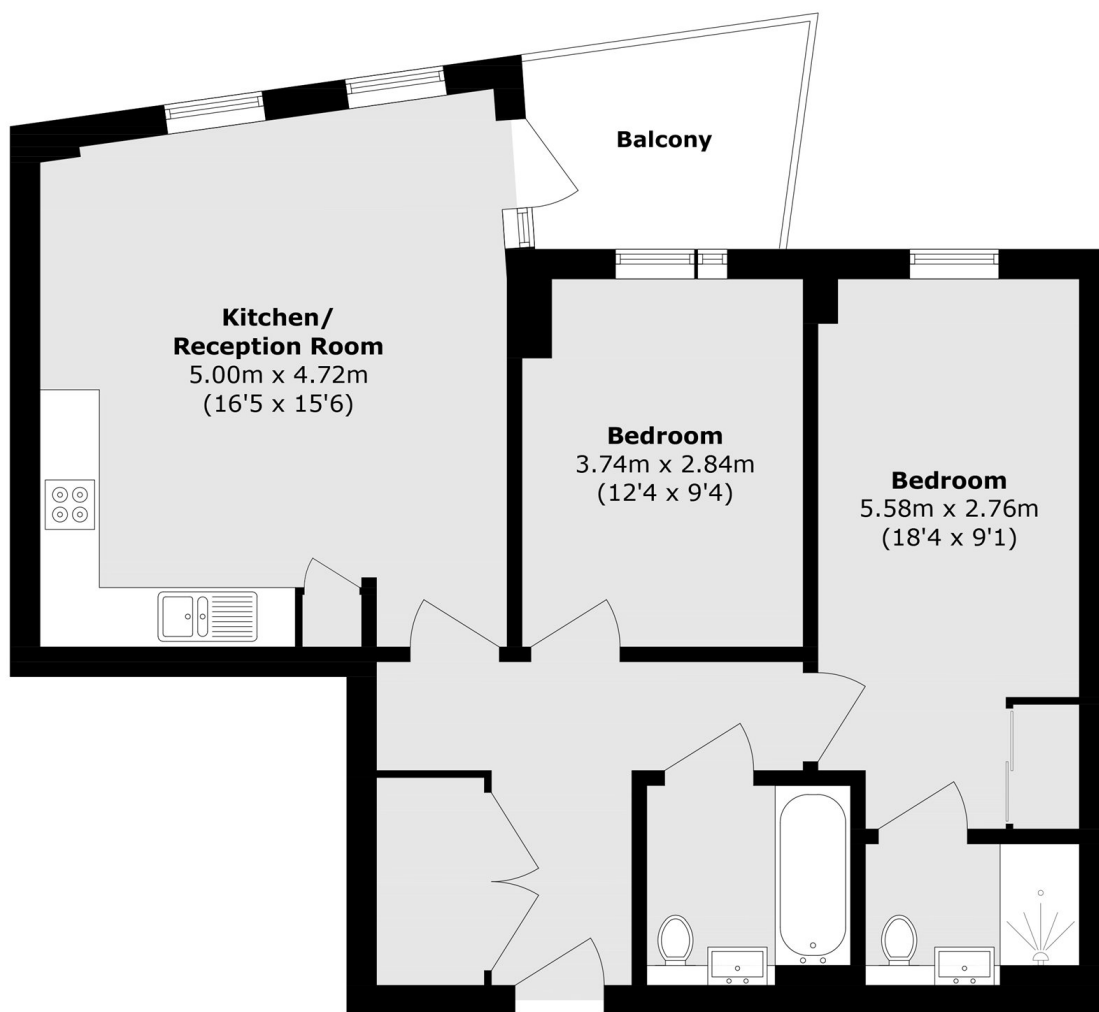
A stunning two bedroom bright and airy apartment situated in this modern development in a sought after location further benefiting from two bathrooms and a private balcony.

Bellville House is part of a contemporary development strategically positioned on the corner of Norman Road and Greenwich High Road. Its prime location ensures you're literally moments away from mainline rail and DLR connections, facilitating seamless travel. Additionally, a brief stroll takes you to the vibrant Town Centre, offering an array of shops and restaurants to explore at your leisure

Features

- Moments From The DLR
- Private Balcony
- Sought After Location
- EWS1 Compliant!
- Two Bathrooms
- Communal Roof Terrace

John Donne Way,
London, SE10



Total area (approx.): 70.8 sq. m (762.3 sq. ft)

Balcony (approx.): 3.5 sq. m (37.8 sq. ft)