

27 Fonthill Road, Finsbury Park, London, N4 3HY

Flat to Rent
2 Bedrooms
£530 pw

Contact:

Residential Lettings

020 7843 9180

Description

Two-bedroom apartment to rent in Stroud Green / Finsbury Park.

Available to rent this Double Bedroom Ground Floor Apartment with Private Patio – Fonthill Road, Finsbury Park, N4.

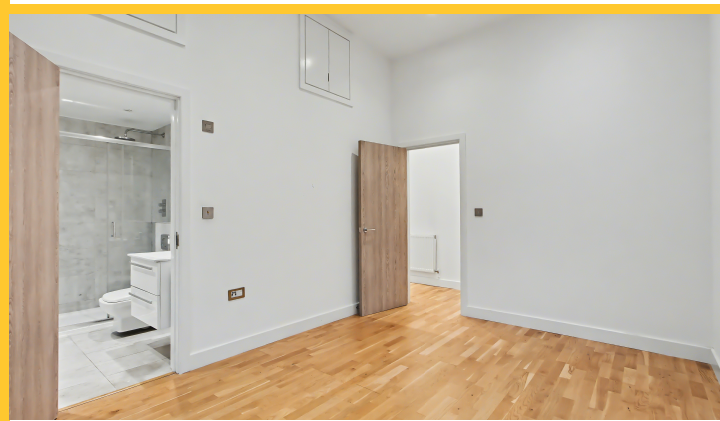
Finished to a high modern standard, the property provides generous room sizes, excellent natural light and smart, well-designed interiors.

The apartment features a separate modern kitchen with integrated appliances, a bright and spacious living room, two genuine double bedrooms, and a sleek fully tiled bathroom. The layout offers excellent privacy and flexibility.

- Available Immediately
- Entry Phone System
- Gas Central Heating
- Separate Bathroom
- Walking Distance From Tube Station

Your Notes

27 Fonthill Road, Finsbury Park, London, N4 3HY



A standout feature is the private patio, providing valuable outdoor space perfect for entertaining, relaxing, or enjoying summer evenings.

Located on Fonthill Road, the property is just moments from an excellent selection of shops, cafés, and amenities.

Finsbury Park Station (Victoria Line, Piccadilly Line & National Rail) is within easy walking distance, offering fast and convenient connections across London.

Please note the following ;

There is no parking available with this property and residents can not apply for residential parking permits via the council as this is a car free property.

There are no bills included in the rent.