

tavistockbow

For Rent



People Make Places



Centre Point Residences, New Oxford St WC1

1 bedroom | 748 sq ft

£1,200 pw

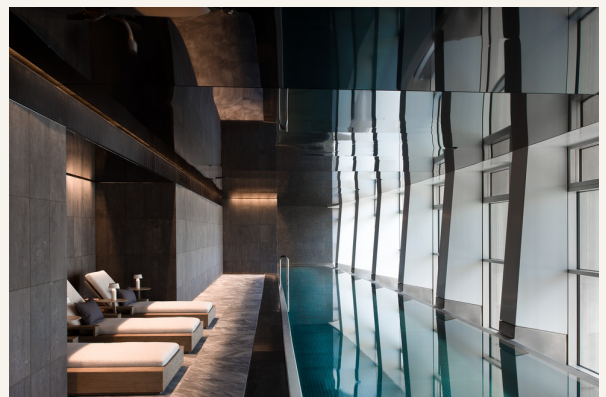




Positioned in one of the West End's most prestigious buildings, this one bedroom apartment in Centre Point Residences benefits from a 24-hour concierge service, a state-of-the-art gym, swimming pool, members' lounge and cinema. Available immediately, furnished.

What you need to know

- One bedroom
- One bathroom
- 8th floor with lift access
- 24-hour concierge
- Pool, gym, cinema room facilities
- Furnished
- Air conditioning
- Guest cloakroom
- Available immediately
- Next to Tottenham Court Road tube





Overview

This one bedroom lateral apartment is in Centre Point Residences, a sought after West End address with a plethora of amenities including a 30-metre infinity pool, 24-hour security, sauna and spa, private gym, lounge club, private dining room and cinema room. The apartment is on the eighth floor and has been meticulously designed with floor-to-ceiling glazing with spectacular London views. The master bedroom has a luxurious ensuite bathroom, while there is a guest cloakroom accessible from the hallway, and an inviting open plan living space with modern white kitchen positioned at one end.

Most of Central London is within walking distance as Centre Point is located on the borders of Soho, Oxford Street, Bloomsbury, Fitzrovia and Covent Garden. Underground services can be accessed via Tottenham Court Road (Northern, Central and Elizabeth Lines) for travel within London and as far as Heathrow and Canary Wharf. Several bus routes operate on nearby Oxford Street, Tottenham Court Road and Charing Cross Road.

The apartment is available immediately on a furnished basis. Subject to contract and satisfactory references. Camden Council tax band: E.



Centre Point Residences, New Oxford St WC1



Centre Point Residences, New Oxford St WC1

People Make Places

London is a collection of inspiring urban villages and one of the most exciting places in the world to live, work & play.

We work with both property owners and their occupiers, sharing the story of these vibrant neighbourhoods, conveying the unique soul & energy to future custodians, the people who'll keep them buzzing.

And unlike many real estate businesses we're not just about buildings, because streets & buildings don't make a neighbourhood.

We're about building relationships, because **people make places**.

MISINTERPRITATION ACT [COPYRIGHT] DISCLAIMER: Tavistock Bow Ltd for themselves and for the vendor(s) of this property whose agents thy are, given notice that: 1. These particulars do not constitute, not constitute any part of, an offer or contract. 2. None of the statements contained in these particulars as to the property are to be relied on as statements or representations of fact. 3. Any intending purchaser or lessee must satisfy themselves by inspection or otherwise as to the correctness of each of the statements contained in these particulars. 4. The vendor(s) or lessor(s) do not make or give and neither Tavistock Bow Ltd nor any person in their employment has any authority to make or give any representation or warranty whatever in relation to this property. Finance Act 1989, Unless otherwise stated all prices and rents are quote exclusive of VAT. Property Misrepresentation Act 1991; These details are believed to be correct at the time of compilation but may be subject to subsequent amendment.

Follow us:     @tavistockbow

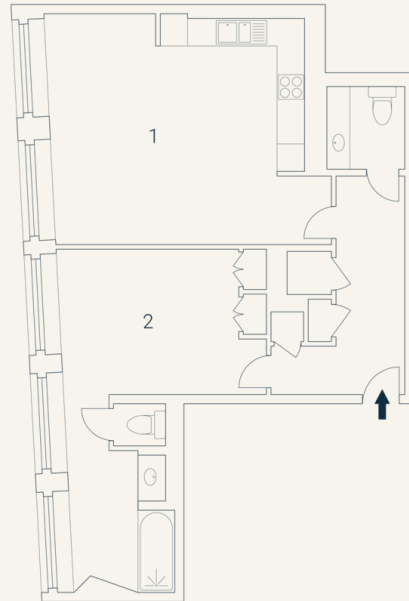
Score	Energy rating	Current	Potential
92+	A		
81-91	B	83 B	83 B
69-80	C		
55-68	D		
39-54	E		
21-38	F		
1-20	G		

Centre Point, WCI

Approximate Gross Internal Area 69.49 sqm/ 748 sq ft

Eighth Floor

1 Living/
Dining/ 4.85 x 3.16M
Kitchen 15'11" x 10'4"
5.67 x 5.02M
18'7" x 16'6"



Floorplan produced for Tavistock Bow. Illustration for identification purposes only and not to scale. All measurements are approximate and not to be relied upon.

tavistockbow

21 New Row, Covent Garden,
London, WC2N 4LE

t: 020 7477 2177
e: hello@tavistockbow.com
w: tavistockbow.com



Centre Point Residences, New Oxford St WC1