



Gloucester Road, SW7

£750 Per week

A charming two double bedroom, two bathroom apartment on the second floor of this well maintained building located on the fashionable Gloucester Road.

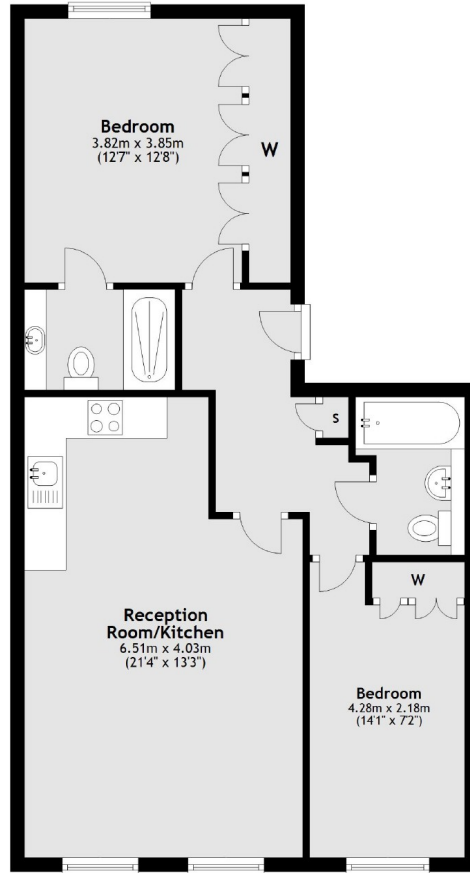
Close to a selection of delis, boutiques, supermarkets, shops and restaurants and with easy access to Gloucester Road underground station and Heathrow airport.

Features

- Wooden Floors Throughout
- Washer/Dryer
- Two Large Bedrooms
- Open Plan Living Area
- Ample Storage
- Two Bathrooms

Gloucester Road,
London, SW7

Second Floor



Total area: approx. 63.6 sq. metres (685.0 sq. feet)