



Meath Crescent, E2

£2,250 Per week

A well-presented two bedroom, two bathroom apartment located on Meath Crescent. The property features a spacious open plan living area, two double bedrooms and two bathrooms. Further benefits include a private balcony and a Juliette balcony off the living space.

Meath Crescent is ideally located just a short distance from Mile End (District, Hammersmith&City) and Bethnal Green (Central). Nearby Meath Gardens and Victoria Park can be accessed directly via the towpath with its local coffee shops and restaurants.

Features

- Two bedrooms
- Two bathrooms
- Balcony
- Modern development
- Views over Meath Gardens
- Sought after location

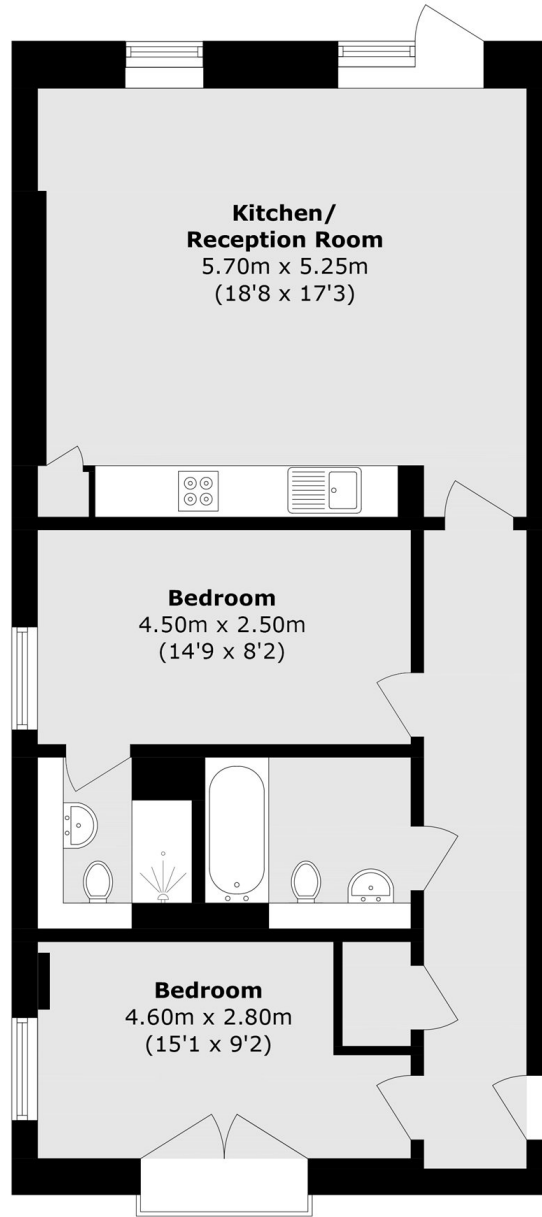


Meath Crescent, E2

A well-presented two bedroom, two bathroom apartment located on Meath Crescent. The property features a spacious open plan living area, two double bedrooms and two bathrooms. Further benefits include a private balcony and a Juliette balcony off the living space.



Meath Crescent, London, E2



Total area (approx.): 73.2 sq. m (787.9 sq. ft)