

HOLLOWAY ROAD, ISLINGTON, N7

£2,400

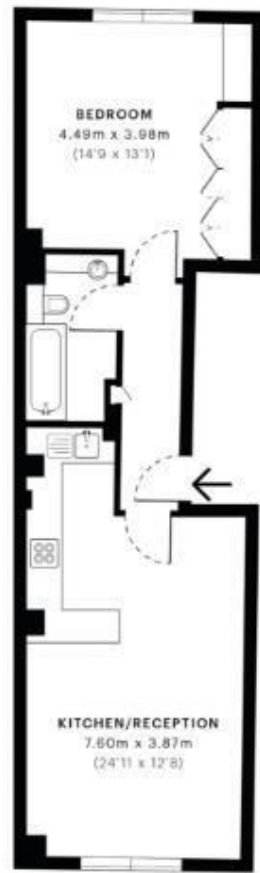
Goldman Greg are delighted to present this bright and spacious one bedroom apartment, set on the second floor of a modern development in Holloway.

The property comprises a large double bedroom with ample storage, an open plan fully integrated kitchen, a bright and airy lounge and a contemporary bathroom.

The property is perfectly situated just a walk away from Holloway Road, Highbury & Islington and Drayton Park Stations, benefiting from excellent transport links and high specifications.



Goldman Greg



— Second Floor.



Energy Efficiency Rating		
	Current	Potential
Very energy efficient - lower running costs		
(92 plus) A		
(81-91) B		
(69-80) C		
(55-68) D		
(39-54) E		
(21-38) F		
(1-20) G		
Not energy efficient - higher running costs		
England & Wales	EU Directive 2002/91/EC	

Agents Note: Whilst every care has been taken to prepare these particulars, they are for guidance purposes only. All measurements are approximate and are for general guidance purposes only and whilst every care has been taken to ensure their accuracy, they should not be relied upon and potential buyers/tenants are advised to recheck the measurements

Goldman Greg
143 Leman Street
London
E1 8EY

02079770018
leads@goldmangreg.co.uk
www.goldmangreg.co.uk

