



Guide Price
£795,000

Freehold

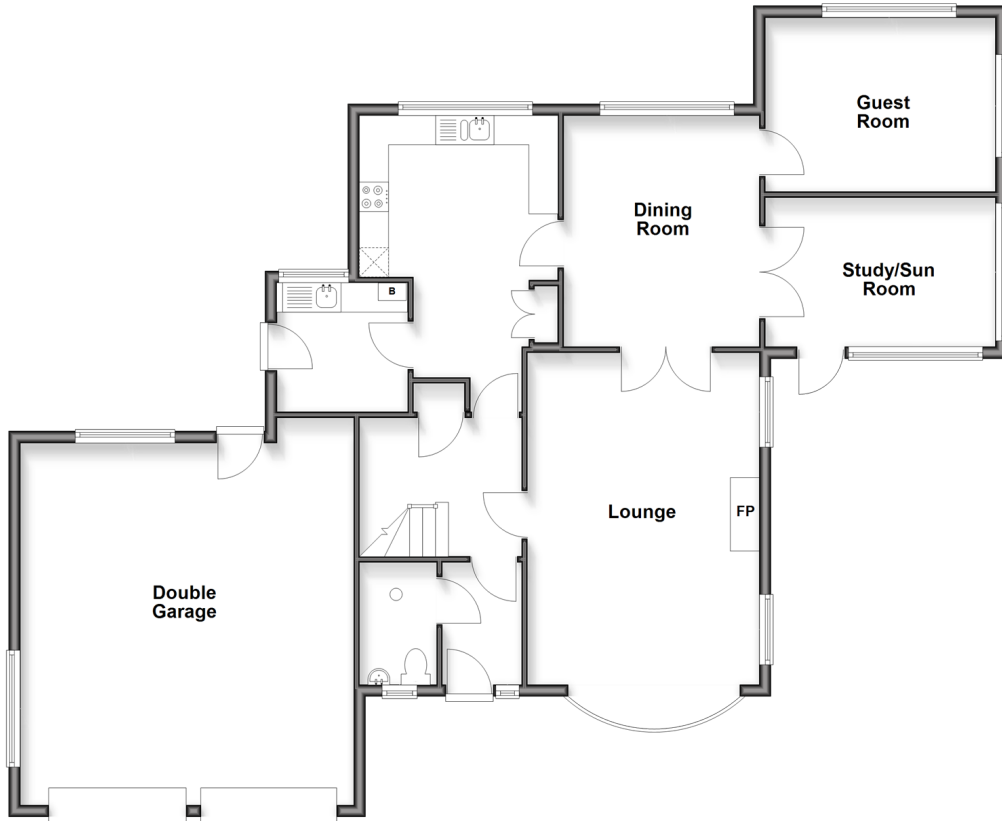
5x  3x  3x 

**The Peak, Rowland's
Castle, Hampshire, PO9**

cubitt & west
Helping you move forwards

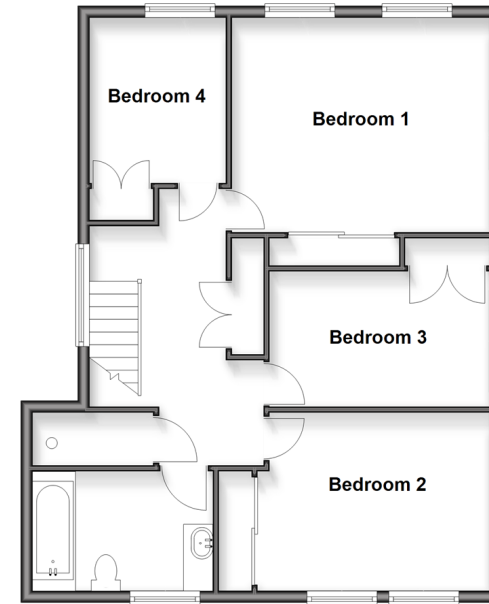
Ground Floor

Approx. 129.2 sq. metres (1390.5 sq. feet)



First Floor

Approx. 70.0 sq. metres (753.5 sq. feet)



Accommodation

GROUND FLOOR

Entrance Hallway

Lounge: 18'3 x 12'9 (5.57m x 3.89m)

Dining Room: 13'0 x 10'9 (3.97m x 3.28m)

Study/Sun Room : 13'6 x 8'8 (4.12m x 2.64m)

Guest Room: 12'7 x 9'8 (3.84m x 2.95m)

Kitchen: 16'8 x 11'3 (5.08m x 3.43m)

Utility Room: 7'9 x 7'5 (2.36m x 2.26m)

Wet Room

FIRST FLOOR

Landing

Bedroom 1: 15'1 up to fitted wardrobes x 12'3 (4.60m x 3.74m)

Bedroom 2: 13'1 x 10'2 up to fitted wardrobes (3.99m x 3.10m)

Bedroom 3: 13'5 x 7'6 up to fitted wardrobes (4.09m x 2.29m)

Bedroom 4: 8'9 up to fitted wardrobes x 7'4 (2.67m x 2.24m)

Bathroom

Wet Room

OUTSIDE

Front & Rear Gardens

Double Garage

Driveway Parking



Main features

- Detached family home in a cul-de-sac location
- Situated on a substantial plot
- Opportunity to extend further STP
- Three reception rooms
- Utility room
- Double garage & drive
- Front & rear gardens
- Highly requested location
- No forward chain



Nearest Schools

Primary Schools: Rowlands Castle St John's C of E
Controlled Primary 0.7 miles
Secondary Schools: Staunton Community Sports College
1.1 miles, Park Community School 2.3 miles
Further Education: Havant College 2.6 miles



Transport Information

Train Stations: Rowlands Castle - main line to London 0.3
miles, Warblington 2.7 miles, Havant 2.8 miles,
Bedhampton 3.0 miles and bus stops



Address

The Peak, Rowland's Castle, Hampshire, PO9



Directions

For directions to this property please contact us.



cubitt&west
Helping you move forwards

Call Emsworth Branch 01243 377888 ■ cubittandwest.co.uk



44608076/20260511/LH/KC