

Wellington Road, NW8

£625,000

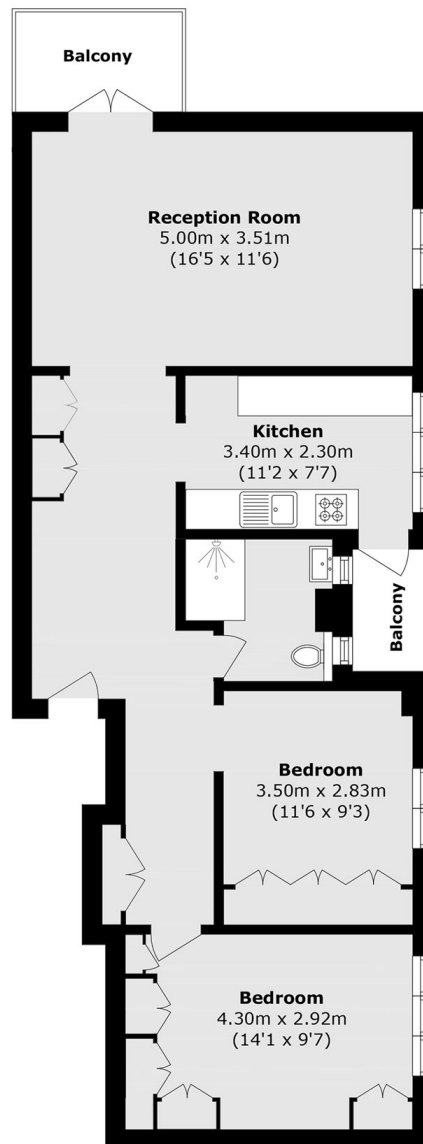
Positioned in the heart of St John's Wood, this elegant upper-floor apartment is offered to the market chain free. The property features a bright dual-aspect reception room, two private balconies, two well-proportioned double bedrooms, and a stylish dine-in kitchen. Flooded with natural light and offering generous outdoor space, the apartment provides refined and well-balanced living in one of London's most desirable neighbourhoods.

Next to Regent's Park, the flat is surrounded by excellent shops, cafés, and restaurants. Iconic landmarks including Lord's Cricket Ground, Primrose Hill, and Abbey Road are all within walking distance, while nearby St John's Wood station and multiple bus routes provide easy access across London and beyond.

Features

- Chain Free
- Good Condition
- Two Double Bedrooms
- Two Private Balcony's
- Lift Access
- Excellent Location

Wellington Road,
London, NW8



Total area (approx.): 68.4 sq. m (736.2 sq. ft)

Balcony Total (approx.): 6.7 sq. m (72.1 sq. ft)