



Brunswick Gardens

London, W8

£35,750 per month
(£8,250 per week)

This refined period property has been thoughtfully restored, combining its impressive original detailing with sophisticated modern finishes.

CHESTERTONS



Brunswick Gardens

London, W8

- 5 bedrooms
- 3 reception rooms
- 4 bathrooms
- Semi-Detached



An exceptional family home positioned along one of the coveted “Cherry Blossom” streets close to Kensington Palace. This refined period property has been thoughtfully restored, combining its impressive original detailing with sophisticated modern finishes.

Designed to provide outstanding space for everyday living as well as entertaining, the house is filled with natural light and enhanced by wonderfully high ceilings. The raised ground floor is dedicated to a grand, double-fronted formal reception room, while the garden level features an eye-catching open-plan kitchen, dining, and living space that opens seamlessly onto a generous patio garden — perfect for outdoor dining and family gatherings.

Minimum Term: 12 months
Deposit Required: £0.00
Local Authority:
Council Tax Band:
EPC Rating: To be confirmed
Unfurnished

Chestertons Kensington Lettings

116 Kensington High Street
Kensington
London
W8 7RW
kensingtonlettingsusers@chestertons.co.uk
02079377260
chestertons.co.uk

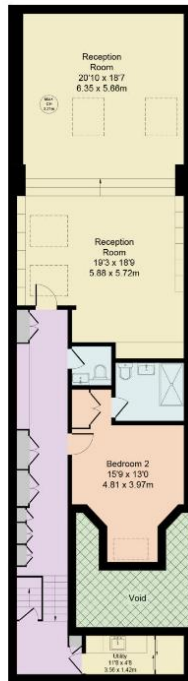
Additional tenant charges apply (fees apply to non-AST tenancies only)
Tenancy Agreement Fee: £300
References per Tenant/Guarantor: £60
Inventory check (approx. £100 – £250 inc. VAT)
chestertons.co.uk/property-to-rent/applicable-fees

Brunswick Gardens, W8

Approximate Gross Internal Area 4359 sq ft - 405 sq m



Key :
CH - Ceiling Height



Second Lower Ground Floor



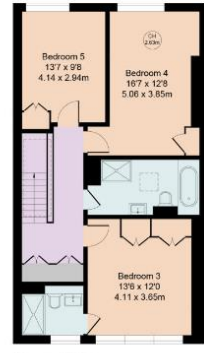
Lower Ground Floor



Raised Ground Floor



First Floor



Second Floor

United Kingdom | Sotheby's
INTERNATIONAL REALTY

