



Connells

Leigh Road
Chandler's Ford Eastleigh



Property Description

This spacious four-bedroom detached house sits on a generous corner plot in the highly desirable area of Chandler's Ford and offers fantastic potential for modernisation, making it an ideal opportunity to create a wonderful family home.

To the front, the property benefits from a large front garden with a stone pathway leading to the entrance and a substantial lawn area, providing an attractive approach and excellent kerb appeal.

Upon entering, a large and welcoming entrance hall provides access to the ground floor accommodation, including a convenient downstairs cloakroom.

The expansive lounge features a charming fireplace and a bay window, creating a bright and comfortable living space. There is also a separate dining room with double doors opening onto the garden, ideal for entertaining.

In addition, the ground floor offers a dedicated study, perfect for home working.

The fitted kitchen provides ample storage and workspace and is complemented by a separate utility room for added practicality.

Upstairs, there are four well-proportioned bedrooms. Bedrooms one and two are particularly spacious and both benefit from built-in wardrobes, while bedroom three includes a useful built-in cupboard over the stairs.

The family bathroom features a large corner bath with a shower over.

Outside, the rear garden extends from the side of the property and leads to rear access where off-road parking, and a garage are located.

The property also benefits from solar panels.

Entrance Hall

PVC door to front aspect. Double glazed window to side aspect. Built in storage cupboards under stairs.

Cloakroom

Double glazed window to side aspect. Wash hand basin. Toilet.

Study

Built in cupboard, Radiator. Telephone port.

Lounge

Double glazed bay window to front aspect. Double glazed window to side aspect. Gas fireplace. TV and telephone port. Radiator.

Dining Room

Double glazed window to rear aspect. Double glazed patio doors onto garden. Radiator.

Kitchen

Double glazed window to rear aspect. Fitted kitchen with wall and base units. Fitted gas hob and electric oven. Space for fridge freezer and dishwasher. Sink and drainer set into worktop.

Utility Room

Double glazed window to side aspect. PVC door to rear aspect leading to garden. Fitted wall and base units. Space for fridge freezer, washing machine, and tumble dryer. Boiler on wall. Sink.

Landing

Stairs from hallway up to landing. Double glazed window to side aspect. Built in airing cupboard. Loft access. Loft ladder boarded and insulated.

Bedroom 1

Double glazed window to front aspect. Two built in wardrobes. Radiator.

Bedroom 2

Double glazed window to rear aspect. Two built in wardrobes. Radiator.

Bedroom 3

Double glazed window to front aspect. Radiator. Built in cupboard over stairs.

Bedroom 4

Double glazed window to rear aspect. Radiator.

Bathroom

Double glazed window to side aspect. Wash hand basin. Large corner bath with electric shower over. Toilet. Fully tiled. Radiator. Extractor fan.

Outside

To the front. Large front lawn with path leading to front door.

To the rear. Side access. Large side garden with lawn and paved area. Outside tap. Rear gate leading to car port and garage. Off road parking for 2/3 cars.

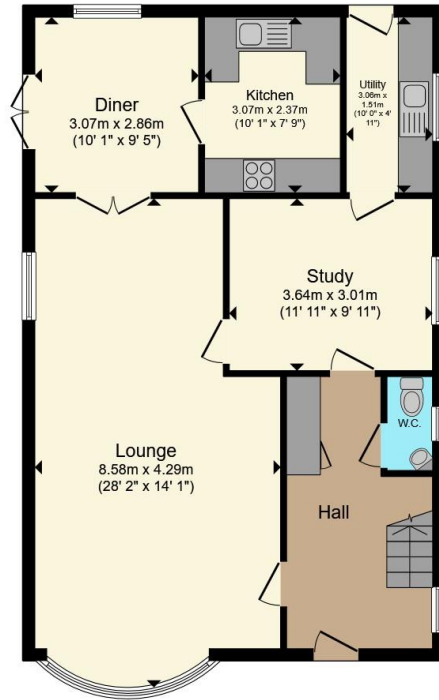
Garage

Up and over door. Electric. Single glazed window to side.

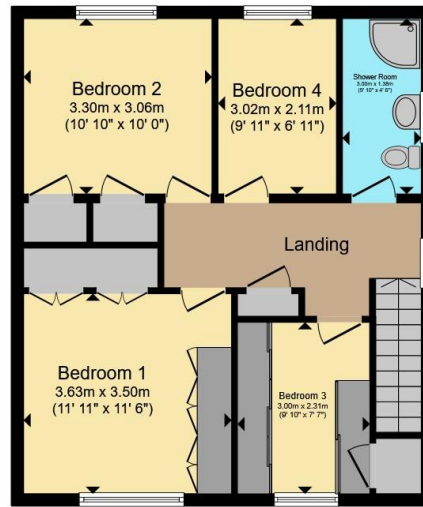
Agent Notes

Solar panels.





Ground Floor



First Floor

Total floor area 135.7 m² (1,461 sq.ft.) approx

This floor plan is for illustrative purposes only. It is not drawn to scale. Any measurements, floor areas (including any total floor area), openings and orientation are approximate. No details are guaranteed, they cannot be relied upon for any purpose and they do not form part of any agreement. No liability is taken for any error, omission or misstatement. A party must rely upon its own inspection(s). Powered by www.propertybox.io



To view this property please contact Connells on

T 02380 618 343
E eastleigh@connells.co.uk

19 Market Street
 EASTLEIGH SO50 5RH

EPC Rating: Council Tax
 Awaited Band: D

view this property online connells.co.uk/Property/EGH309533

Tenure: Freehold



1. MONEY LAUNDERING REGULATIONS Intending purchasers will be asked to produce identification documentation at a later stage and we would ask for your co-operation in order that there will be no delay in agreeing the sale. 2. These particulars do not constitute part or all of an offer or contract. 3. The measurements indicated are supplied for guidance only and as such must be considered incorrect. Potential buyers are advised to recheck measurements before committing to any expense. 4. We have not tested any apparatus, equipment, fixtures, fittings or services and it is in the buyers interest to check the working condition of any appliances.

Connells Residential is registered in England and Wales under company number 1489613, Registered Office is Cumbria House, 16-20 Hockliffe Street, Leighton Buzzard, Bedfordshire, LU7 1GN. VAT Registration Number is 500 2481 05.

See all our properties at www.connells.co.uk | www.rightmove.co.uk | www.zoopla.co.uk

Property Ref: EGH309533 - 0002