



The Quadrangle, SW10  
£800,000

Waterview  


OFFERS IN EXCESS OF. A bright and larger than average two double bedroom upper ground floor apartment with its own 40ft south east facing garden terrace.

Chelsea Harbour is a prestigious riverside development located off Lots Road, situated close to the famous Kings Road.





Accommodation is made up of entrance hall leading to a large living area, with space for dining and double aspect with access to the garden terrace and also a further private balcony. The integrated kitchen overlooks the terrace. Two generous double bedrooms have a range of built-in wardrobes and en-suite bathrooms and there is a separate W.C. There is access from the living area and one of the bedrooms to private garden terrace.

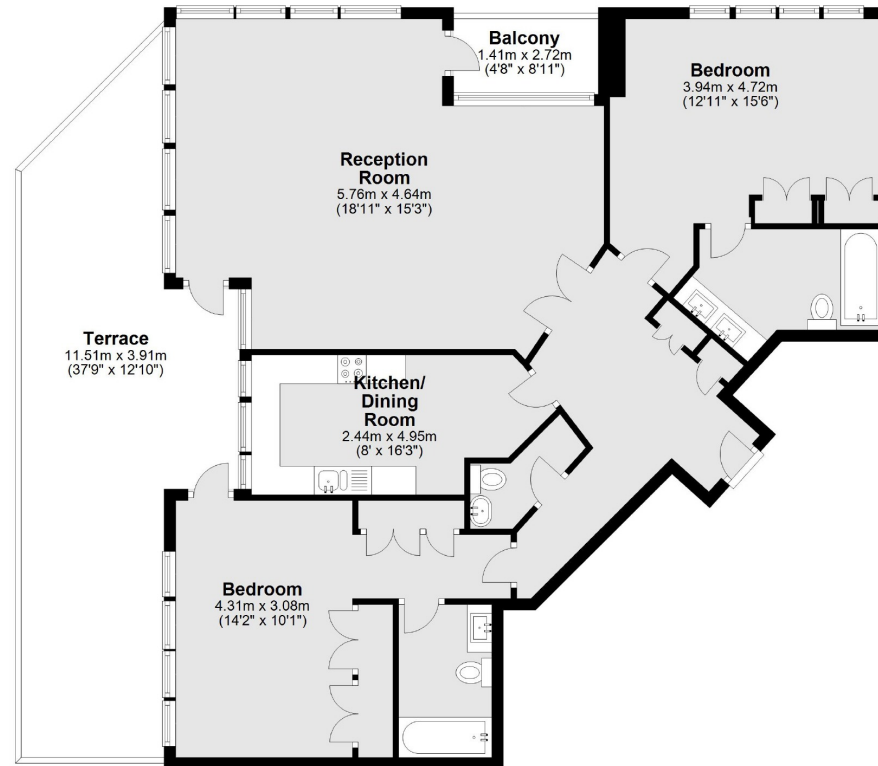
Residents have the benefit of concierge service and lift to a secure underground parking space. Offered with no onward chain.

### Features

- Beautiful Apartment
- Private Garden Terrace
- Secure Parking
- Over 1,200sqft
- Concierge
- No Chain



# The Quadrangle, Chelsea Harbour, SW10



Total area: approx. 112.4 sq. metres (1209.8 sq. feet)

## Contact

To arrange a viewing call our office on the number below or visit our website.



Energy Rating: D. We aim to make our particulars both accurate and reliable. However they are not guaranteed; nor do they form part of an offer or contract. If you require clarification on any points then please contact us, especially if you're traveling some distance to view. Please note that appliances and heating systems have not been tested and therefore no warranties can be given as to their good working order.

