



**Chapel Way, Axminster EX13 5GY**



**welcome to**

## **Chapel Way, Axminster**

Fox & Sons are delighted to present to the market this beautifully maintained two-bedroom semi-detached home, set on the outskirts of the historic market town of Axminster.

### **Front Of Property**

Paved path to porch covered front door with outside light, sleeper bordered decorative gravel with established plants

### **Entrance Hallway**

Entered via uPVC front door with opaque double glazed panel, built in storage cupboard housing wall mounted boiler and fuseboard, stairs rising to first floor, doors leading to subsequent rooms, radiator, ceiling light points

### **Downstairs Cloakroom**

Hand wash basin with tiled splashback, low level WC, radiator, spotlight

### **Kitchen/Diner**

uPVC double glazed window to front aspect, contemporary wall and base units with worktop over, integrated electric oven with gas hob and cooker hood over, integrated fridge/freezer, space for washing machine, stainless steel sink, space for dining area, radiator, ceiling light points

### **Lounge**

uPVC double glazed double doors to rear aspect leading to garden, uPVC double glazed window to rear aspect, radiator, ceiling light point

### **Landing**

Loft hatch, doors leading to subsequent rooms, ceiling light point

### **Bedroom 1**

uPVC double glazed window to rear aspect, radiator, ceiling light point

### **Bedroom 2**

uPVC double glazed window to front aspect, built in over the stairs storage, radiator, ceiling light point

### **Bathroom**

Panel bath with shower over and tiled surround, hand wash basin with tiled splashback, low level WC, part tiled walls, heated towel rail, ceiling light point

### **Rear Garden**

Timber fence enclosed with side gate providing access to front of property, patio area and astro turf

### **Parking**

Two allocated parking spaces to front of property

### **Location**

Situated on the edge of the popular 'Mill Brook Green' development on the outskirts of Axminster, which offers a host of local shops and amenities, including larger supermarkets. Excellent transport links with the mainline train station running directly into Exeter Central and London Waterloo. The neighbouring 'Jurassic Coast' coastal towns of Seaton, Lyme Regis and Charmouth offer further amenities, along with stunning scenery and beautiful beaches.

### **Agent's Note**

Gateway management service charge - £400 per year





***view this property online*** [fox-and-sons.co.uk/Property/AXM104336](https://fox-and-sons.co.uk/Property/AXM104336)



welcome to

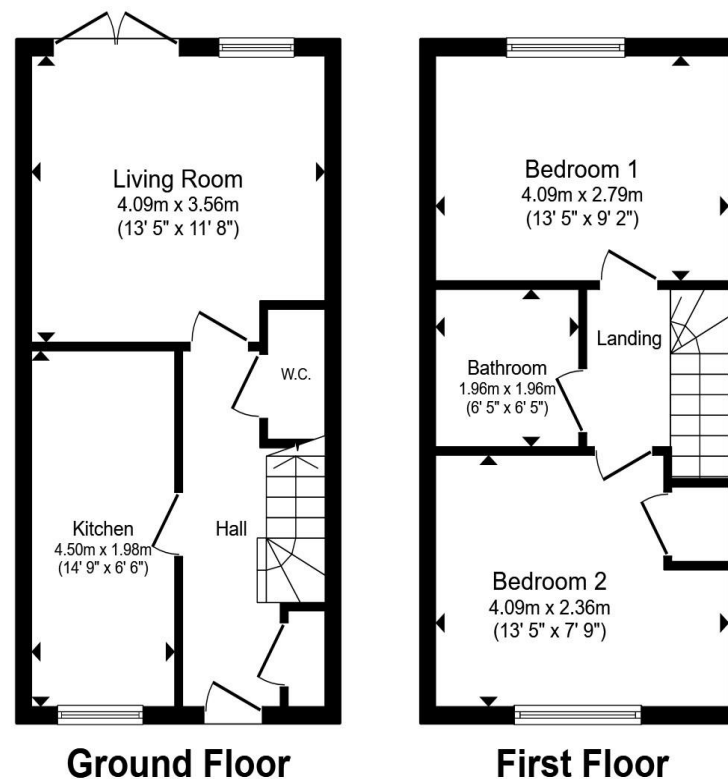
## Chapel Way, Axminster

- WELL PRESENTED SEMI-DETACHED HOME
- COUNCIL TAX BAND B
- TWO GOOD SIZED BEDROOMS
- KITCHEN/DINER
- LOUNGE OPENING ONTO GARDEN

Tenure: Freehold EPC Rating: B

Council Tax Band: B

**£240,000**



Total floor area 64.6 m<sup>2</sup> (695 sq.ft.) approx

This floor plan is for illustrative purposes only. It is not drawn to scale. Any measurements, floor areas (including any total floor area), openings and orientation are approximate. No details are guaranteed, they cannot be relied upon for any purpose and they do not form part of any agreement. No liability is taken for any error, omission or misstatement. A party must rely upon its own inspection(s). Powered by [www.propertybox.io](http://www.propertybox.io)

  
fox & sons

**view this property online** [fox-and-sons.co.uk/Property/AXM104336](http://fox-and-sons.co.uk/Property/AXM104336)



Property Ref:  
AXM104336 - 0002

1. MONEY LAUNDERING REGULATIONS Intending purchasers will be asked to produce identification documentation at a later stage and we would ask for your co-operation in order that there is no delay in agreeing the sale. 2. These particulars do not constitute part or all of an offer or contract. 3. The measurements indicated are supplied for guidance only and as such must be considered incorrect. Potential buyers are advised to recheck measurements before committing to any expense. 4. We have not tested any apparatus, equipment, fixtures or services and it is in the buyers interest to check the working condition of any appliances. 5. Where an EPC, or a Home Report (Scotland only) is held for this property, it is available for inspection at the branch by appointment. If you require a printed version of a Home Report, you will need to pay a reasonable production charge reflecting printing and other costs. 6. We are not able to offer an opinion either written or verbal on the content of these reports and this must be obtained from your legal representative. 7. Whilst we take care in preparing these reports, a buyer should ensure that his/her legal representative confirms as soon as possible all matters relating to title including the extent and boundaries of the property and other important matters before exchange of contracts.

Fox & Sons is a trading name of Sequence (UK) Limited which is registered in England and Wales under company number 4268443, Registered Office is Cumbria House, 16-20 Hockliffe Street, Leighton Buzzard, Bedfordshire, LU7 1GN. VAT Registration Number is 500 2481 05.

  
fox & sons



**01297 32323**



[axminster@fox-and-sons.co.uk](mailto:axminster@fox-and-sons.co.uk)



West Street, AXMINSTER, Devon, EX13 5NU



[fox-and-sons.co.uk](http://fox-and-sons.co.uk)