



27 | Davies Drive | Cringleford | NR4 7WG

Guide Price £475,000

 **BUTTERFLY** 
SALES, LETTINGS & PROPERTY MANAGEMENT

The Features

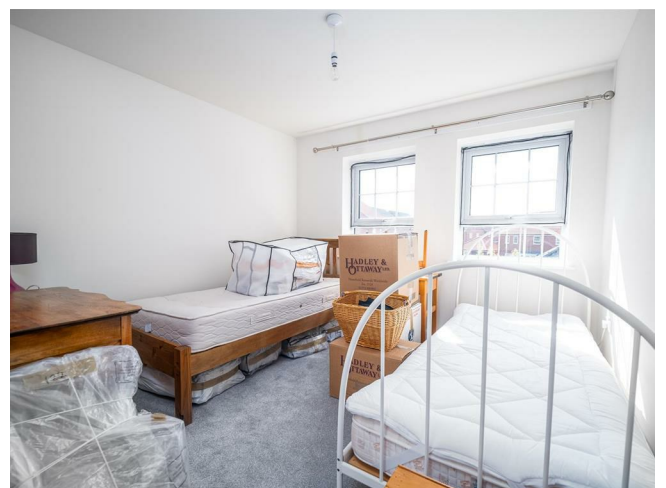
- Guide Price £475,000 - £500,000
- 4 bedroom detached family home offering over 1,500 sq. ft of accommodation
- Bay fronted 17'9 lounge with plus separate study and WC
- Open plan kitchen/dining room plus separate utility room
- Main bedroom with built in wardrobe, and en-suite shower room
- Three further double bedrooms and a family bathroom with bath and separate shower
- Tandem driveway, single garage, and an enclosed low maintenance rear garden
- Built in 2021 and located on the popular Cringleford Heights development
- Double Glazed & Gas Central Heating
- Located at the end of a cul de sac

About the Property

This spacious four bedroom detached family home is located at the end of a cul de sac on the popular Cringleford Heights development. Built in 2021 and offered chain free, the property provides over 1,500sq. ft. of accommodation.

On the ground floor, the entrance hall provides access to the bay fronted 17'9 lounge, study and a WC. The kitchen/dining room extends the full length of the property at the rear and includes a built in fridge, freezer, dishwasher, hob wine cooler and oven. It also features patio doors to the rear garden and leads to a separate utility room with space for additional appliances.

Upstairs, the main bedroom benefits from a built in wardrobe, along with an en-suite shower room. There are three further double bedrooms, and the family bathroom includes both a bath and a separate shower.





The Outside

Outside, the property is located at the end of a cul de sac with a lawned front garden, entrance path, and gated side access. A tandem driveway provides off road parking and leads to a single garage. The rear garden is enclosed, low maintenance, and mainly laid to lawn.

Location Overview

Davies drive is located in Cringleford, just a short distance from the Norfolk and Norwich Hospital, the Norwich Research Park, and the University of East Anglia. The property also offers convenient access to Norwich city centre, the A47, and the A11. Cringleford is a highly regarded suburb situated approximately two miles southwest of Norwich. It combines historic character with modern development and offers a range of local amenities, including a well-rated primary school, local shops, and green spaces. The neighbouring area of Eaton provides further facilities such as supermarkets, cafés, and additional services, along with easy access to the UEA campus. Its proximity to the A11 makes Cringleford particularly well-suited for those commuting to Cambridge, London, or elsewhere in the region.

Directions

Enter the Round House Park development via Round House Way. Take the first exit at the first roundabout, the second exit at the second roundabout and the first exit at the third roundabout before turning almost immediately left into the Cringleford Heights development via Haldane Drive then right into Davies Drive, and right again, where the property can be found on the right hand side at the end of the cul de sac.

AGENTS NOTE

Please be advised that the seller of this property is a connected person to Butterfly Homes

Please note there is a development management charge of approx £205.38.

INTERNET & TV: Please be advised that Fibre Networks Limited (OFNL) operates the fibre infrastructure at this property. This networks controls both the internet connection and the television services.

Anti-Money Laundering (AML) Checks

In line with Anti-Money Laundering regulations, we are required to carry out identification and verification checks on all purchasers once an offer has been accepted. To complete these checks, we use a secure electronic verification system via Hipla. A non-refundable fee of £25 + VAT (£30 including VAT) per purchaser will be payable to cover the cost of these checks. This fee is required prior to the issue of the Memorandum of Sale, and all purchasers must complete the verification process to enable the transaction to proceed.

Further Information

Letting Services -

We provide a professional, ARLA-accredited lettings and management service. Whether you're considering renting out your property to purchase another, exploring buy-to-let opportunities, or would simply like a free, no-obligation review of your current portfolio, our team will be happy to help. Please contact the office to discuss your options further.

Referral Fees-

Butterfly Homes may receive a referral fee or commission from recommended solicitors, mortgage advisers, or other third-party service providers. You are under no obligation to use any recommended provider, and details of any such arrangements are available upon request

GDPR – Personal Information

To arrange a property viewing, we are required to collect certain personal information in order to provide a professional service to you and our client, the seller. This information will be shared with the seller but will not be passed to any third party without your consent.

Should you decide to make an offer on a property, some of the personal information you provide will again be shared with the seller. It will not be disclosed to any other third party without your permission.

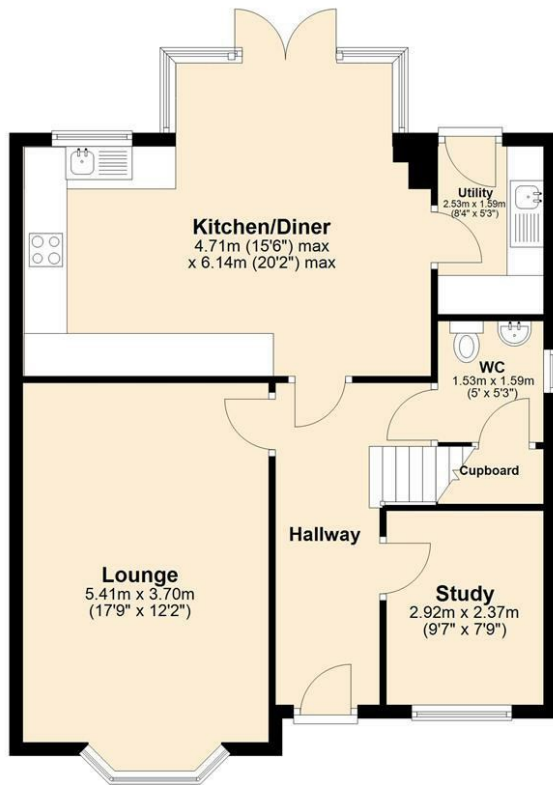
Further details on how we store and process your data are available on request or via our website.

Disclaimer -



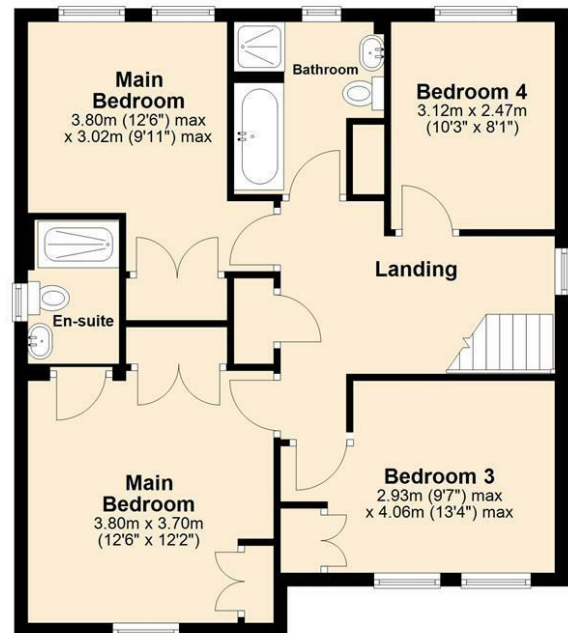
Ground Floor

Approx. 72.6 sq. metres (780.9 sq. feet)



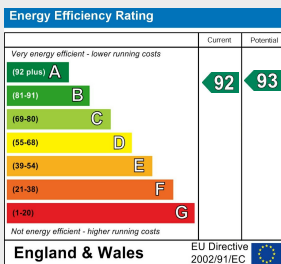
First Floor

Approx. 68.9 sq. metres (741.7 sq. feet)



Total area: approx. 141.5 sq. metres (1522.6 sq. feet)

Every effort has been made to ensure the accuracy of the floorplan provided. However, measurements of doors, windows, rooms, and other items are approximate, and no responsibility is accepted for any errors, omissions, or inaccuracies. This floorplan is for illustrative purposes only and should be used as such by prospective tenants. The services, systems, and appliances depicted have not been tested, and no guarantee is made regarding their functionality or efficiency. Plan produced using PlanUp.



Tenure: Freehold
Council Tax Band: E
Local Authority: South Norfolk



You can also scan the QR code to view the property online. This will take you directly to our website, where you'll find additional photos, detailed floorplan, and all the key information in line with Parts A, B, and C of the Material Information guidance for property listings. You'll also be able to browse our other available properties there.



Butterfly Homes | 6 Church Lane | Eaton | NR4 6NZ
sales@butterflyhomes.co.uk
www.butterflyhomes.co.uk
01603 870870



Butterfly Lettings, trading as Butterfly Homes, and its representatives are not authorised to make statements or assurances about the property, whether on their own behalf or on behalf of the client. No responsibility is accepted for any statements contained in these particulars, which do not form part of any offer or contract. We have taken care to ensure that the details provided for each property are accurate at the time of listing. However, the information supplied is intended as a guide only, and we do not obtain confirmation from the seller's legal representative when preparing it. Buyers should verify any leasehold details, charges, or other matters through their own legal representatives. All measurements, areas, and distances are approximate. Fixtures, fittings, and appliances have not been tested, so we cannot guarantee that they are in working order. It should not be assumed that the property has all necessary planning permissions, building regulations, or other consents. We recommend checking the local council's website for information on conservation areas, flood risks, tree preservation orders, planning applications, and other relevant matters. We also advise reviewing the property and surrounding area using Google Maps or Street View before attending a viewing. Photographs are for illustration only and should not be taken as confirmation that any items shown are included in the sale. If any particular detail is important to you, please seek independent professional verification before proceeding. Referral Fees: Butterfly Homes may receive a referral fee from recommended solicitors, mortgage advisers, or other service providers. Any referral arrangement will not affect the cost or quality of the service provided.

We are Butterfly Lettings LTD trading as Butterfly Homes with registered number 15893663 and address C/O Shaw & Co 3 Colegate Norwich Norfolk NR3 1BN