

62 St. Nicholas Close, Gayton PE32 1QS

£205,000

 2  1  1

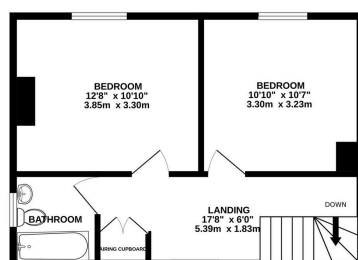
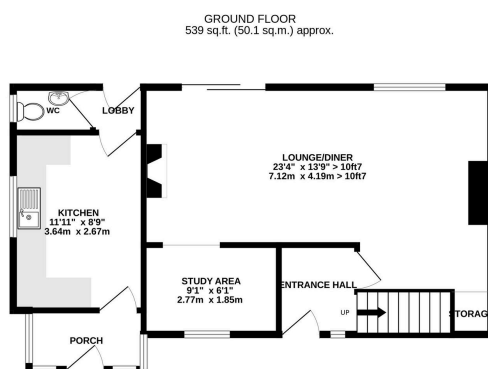


A wonderful opportunity to acquire a spacious village home with great potential.

Set in a quiet cul-de-sac location in the popular Norfolk village of Gayton, this two-bedroom semi-detached house is perfect for those looking for a generously sized plot, flexible living space and the chance to modernise to personal taste. With a large south-facing garden, well-proportioned rooms, and no onward chain, this property is ideal for first-time buyers, downsizers, or investors alike.

Key Features

- Semi-detached house
- 23ft+ Lounge
- Ground floor W.C.
- Cul-de-sac
- Desirable village
- 2 Double bedrooms
- Study area
- South facing garden
- No chain
- Oil central heating



TOTAL FLOOR AREA: 920 sq.ft. (85.5 sq.m.) approx.
Whilst every attempt has been made to ensure the accuracy of the floorplan contained herein, measurements of doors, windows, rooms and any other items are approximate and no responsibility is taken for any error, omission or mis-statement. This plan is for illustrative purposes only and should be used as such by any prospective purchaser. The services, systems and appliances shown have not been tested and no guarantee as to their operability or efficiency can be given.
Made with Metronix (2025)

