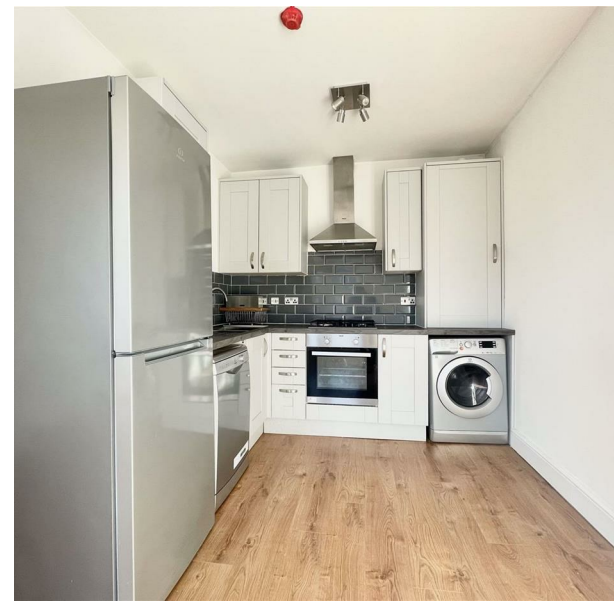


60 James Lane, London, E10 6HL
£1,675 Per Month



60 James Lane, London, E10 6HL

£1,675 Per Month

Council Tax Band: B

Welcome to this charming one-bedroom flat located in the vibrant area of Leytonstone, E11, available to let at a competitive price of £1,675 per calendar month. This modern ground floor flat offers a comfortable and stylish living space, perfect for individuals or couples seeking a convenient urban lifestyle.

Upon entering, you will find a well-proportioned reception room that serves as an inviting space for relaxation and entertainment. The flat features a spacious bedroom, providing a peaceful retreat at the end of the day. The contemporary bathroom is designed with modern fixtures, ensuring both comfort and functionality.

The property benefits from its modern construction, which not only enhances its aesthetic appeal but also contributes to energy efficiency and low maintenance. Situated in Leytonstone, residents will enjoy easy access to a variety of local amenities, including shops, cafes, and parks, making it an ideal location for those who appreciate a lively community atmosphere.

With excellent transport links nearby, commuting to central London and beyond is both convenient and efficient. This flat presents a wonderful opportunity for anyone looking to embrace the dynamic lifestyle that Leytonstone has to offer. Do not miss the chance to make this delightful property your new home.





INDESIT

INDESIT

INDESIT

INDESIT

INDESIT

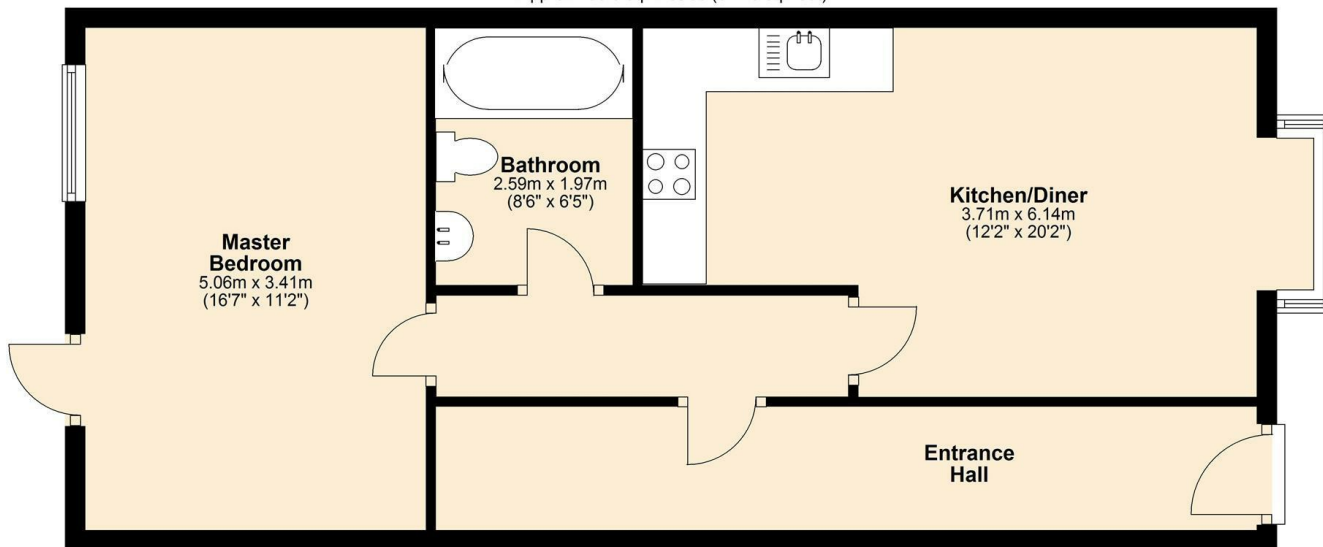




337 Forest Road
London
E17 5JR
02085277007

enquiries@completion.co.uk
completion.co.uk

Ground Floor
Approx. 58.0 sq. metres (624.5 sq. feet)



Energy Efficiency Rating		
	Current	Potential
Very energy efficient - lower running costs		
(92 plus) A		
(81-91) B		
(69-80) C	78	82
(55-68) D		
(39-54) E		
(21-38) F		
(1-20) G		
Not energy efficient - higher running costs		
England & Wales	EU Directive 2002/91/EC	