



83 Harlow Crescent, Harrogate

£425,000 Offers Over



**YOUR AWARD
WINNING AGENT**

#DARINGTOBEDIFFERENT



A beautifully presented and thoughtfully extended three-bedroom detached home, offering generous and well-balanced living accommodation, complemented by an attractive landscaped garden. This impressive property has been modernised and extended by the current owners to a high standard, creating a stylish and practical family home with excellent living and entertaining space. The house occupies a desirable position, within the catchment of popular primary and secondary schools, conveniently placed for Harrogate town centre and also close to beautiful open countryside.

OUTSIDE

A driveway provides off-road parking. To the rear is a particularly attractive landscaped garden, designed to provide an excellent outdoor entertaining space, with gazebo, paved sitting areas and well-stocked planted borders, offering both privacy and visual appeal.

Council Tax band: D

Tenure: Freehold

EPC Energy Efficiency Rating: D



GROUND FLOOR

The generous ground floor accommodation includes a delightful sitting room with bay window to the front, an attractive fireplace with living flame gas fire, and fitted shelving.

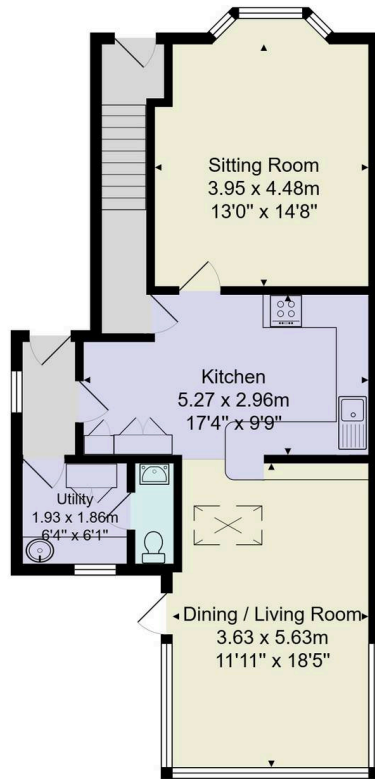
The heart of the home is the stunning kitchen, which is fitted with a range of stylish units with granite worktops, one and a half sink basins with a waste disposal unit, Bosch double ovens, microwave and induction hob and space for a fridge/freezer. The kitchen opens seamlessly into a superb extended living space providing additional sitting and dining areas, with windows and glazed doors overlooking and opening onto the garden, creating a light-filled and sociable environment ideal for modern family living.

There is also a useful utility room with fitted worktops, sink and space and plumbing for a washing machine and tumble dryer, together with a downstairs WC.

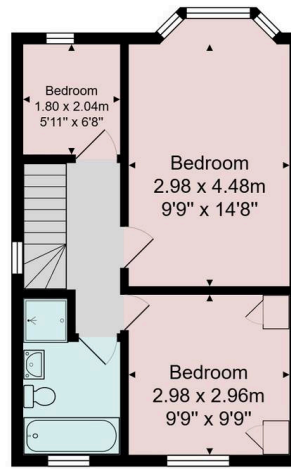
FIRST FLOOR

On the first floor there are three well-proportioned bedrooms, including the main bedroom which benefits from fitted wardrobes and a bay window. The bedrooms are served by a modern bathroom featuring a bath and separate shower.





Ground Floor



First Floor

Total Area: 103.4 m² ... 1113 ft²

All measurements are approximate and for display purposes only.

No liability is accepted by either the agency or Box Property Solutions Ltd as to the exact measurements of the rooms. Box Property Solutions Ltd retains the copyright on this plan and allows agents to use it with agreed permission.

