



## Broadfield Road, SE6

£825,000

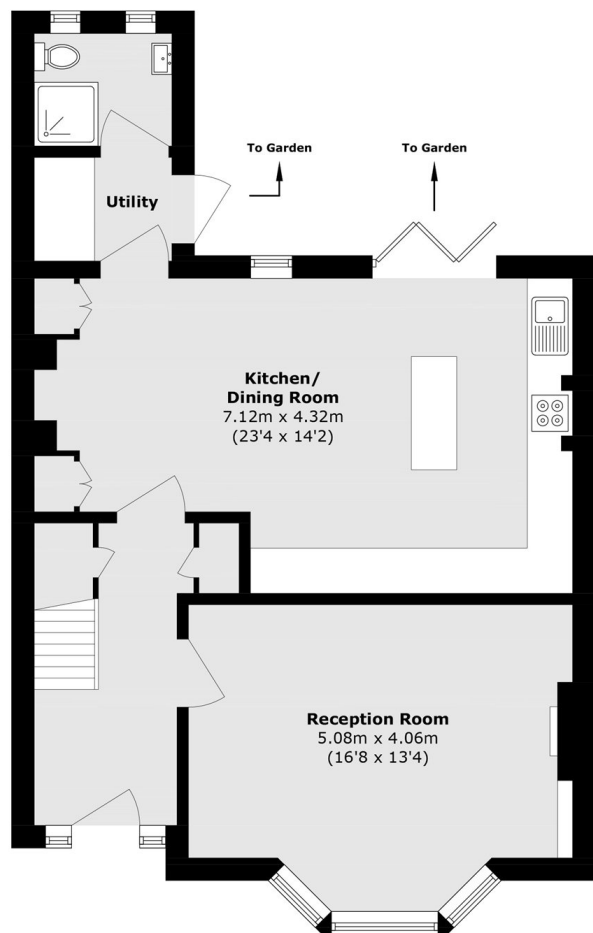
A semi-detached Edwardian house with off-street parking on the sought after Corbett Estate. The property offers four bedrooms and retains period charm with a contemporary kitchen/diner giving access to a generous well maintained rear garden.

Broadfield Road is a pretty residential road made of up large family homes. It has convenient access to Hither Green train station and the open spaces of Mountsfield Park and Foster Memorial Park. There are also a number of popular schools locally including Sandhurst, Colfe's and St. Dunstan's College.

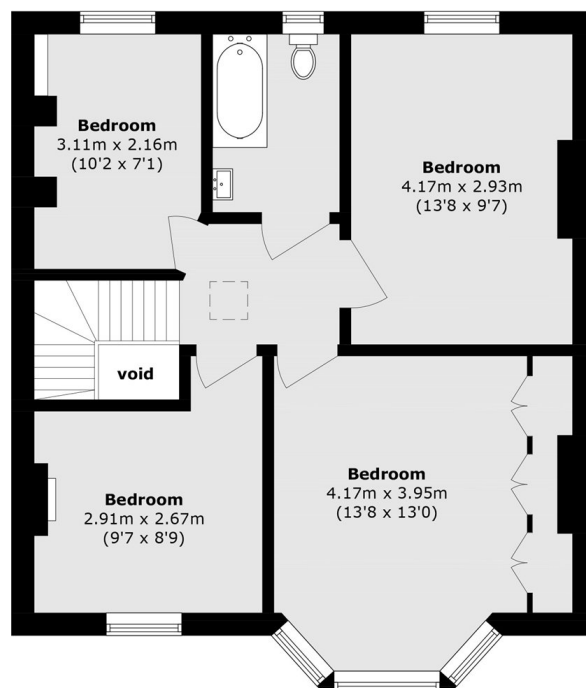
### Features

- Semi-Detached
- Four Bedrooms
- Off Street Parking
- Edwardian
- Popular Residential Road
- Mature Garden

# Broadfield Road, London, SE6



**Ground Floor**



**First Floor**

Total area (approx.): 117.3 sq. m (1262.6 sq. ft)  
(Excluding Void)