

N A I S H
E S T A T E A G E N T S



Y O R K
E S T . 1 9 3 9



26 Aldwark , York, YO1 7BU

Stunning THREE BEDROOM period property in the heart of York, Three Storey, Lounge, Kitchen, Family Bathroom with one dedicated under cover private parking space - one well behaved pet will be considered. Available March 2026

£1,800 PCM

26 Aldwark

, York, YO1 7BU



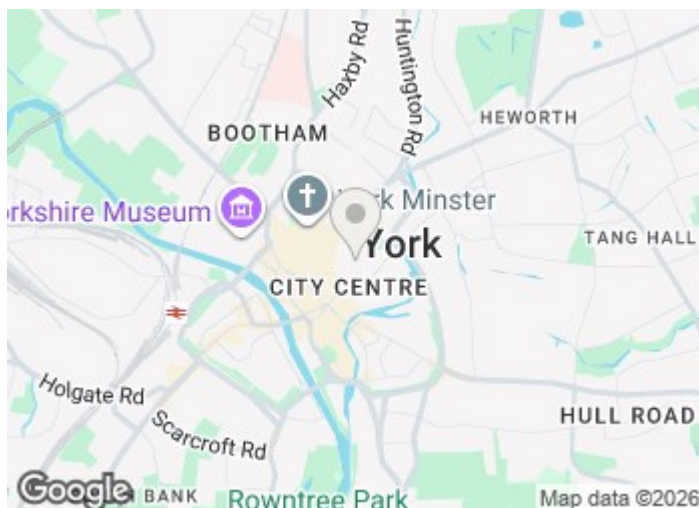
- Three Double Bedrooms
- Stunning Family Bathroom
- One Dedicated Secure Off Road Parking Space
- One Well Behaved Pet Considered
- Good Condition
- First Floor Utility Room
- Gas Central Heating
- Kitchen with wall and base units built in oven
- Lounge leading to Private Outside Garden
- No Smokers / Vapers

Property Description

Environs

Costs and Utilities

Holding deposit information.



Directions



Floor Plan

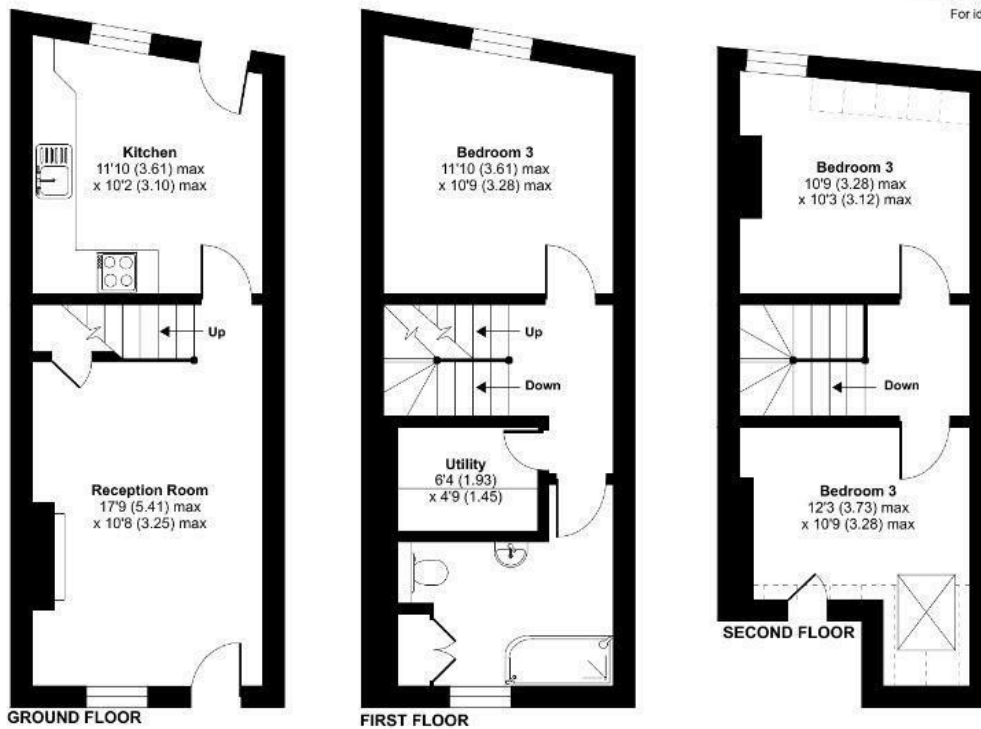
Aldwark, York, YO1

Approximate Area = 858 sq ft / 79.7 sq m

Limited Use Area(s) = 33 sq ft / 3.1 sq m

Total = 891 sq ft / 82.8 sq m

For identification only - Not to scale



Floor plan produced in accordance with RICS Property Measurement Standards incorporating International Property Measurement Standards (IPMS2 Residential). © nichecom 2023. Produced for Naish Estate Agents. REF: 1011160

These particulars, whilst believed to be accurate are set out as a general outline only for guidance and do not constitute any part of an offer or contract. Intending purchasers should not rely on them as statements of representation of fact, but must satisfy themselves by inspection or otherwise as to their accuracy. No person in this firm's employment has the authority to make or give any representation or warranty in respect of the property.

3 High Petergate, York, YO1 7EN
 Tel: 01904 653564 Email: naish@naishproperty.co.uk www.naishproperty.co.uk

Energy Efficiency Rating		Current	Potential
Very energy efficient - lower running costs			
(92 plus) A			88
(81-91) B			
(69-80) C			
(55-68) D		61	
(39-54) E			
(21-38) F			
(1-20) G			
Not energy efficient - higher running costs			
England & Wales		EU Directive 2002/91/EC	